

Product datasheet for **TA365770S**

RSU1 Rabbit Polyclonal Antibody

Product data:

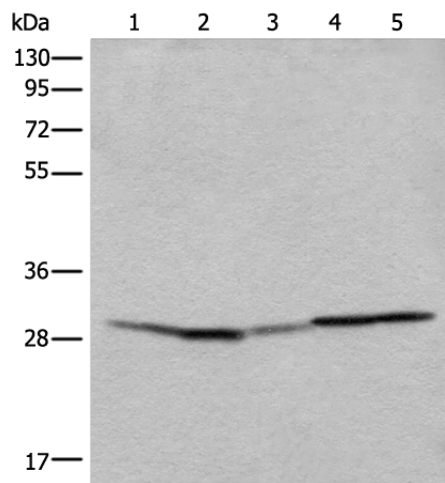
Product Type:	Primary Antibodies
Applications:	IHC, WB
Recommended Dilution:	WB: 200-1000 WB positive control: Lovo, Jurkat and HEPG2 cell, Mouse heart tissue and Rat heart tissue lysates IHC: 25-100 Positive control: Human esophagus cancer Predicted cell location: Nucleus
Reactivity:	Human, Mouse, Rat
Host:	Rabbit
Isotype:	IgG
Clonality:	Polyclonal
Immunogen:	Fusion protein of human RSU1
Formulation:	pH7.4 PBS, 0.05% NaN ₃ , 40% Glycerol
Purification:	Antigen affinity purification
Conjugation:	Unconjugated
Storage:	Store at -20°C.
Stability:	1 year
Predicted Protein Size:	32 kDa
Gene Name:	Ras suppressor protein 1
Database Link:	Entrez Gene 6251 Human Q15404
Background:	This gene encodes a protein that is involved in the Ras signal transduction pathway, growth inhibition, and nerve-growth factor induced differentiation processes, as determined in mouse and human cell line studies. In mouse, the encoded protein was initially isolated based on its ability to inhibit v-Ras transformation. Multiple alternatively spliced transcript variants for this gene have been reported; one of these variants was found only in glioma tumors.



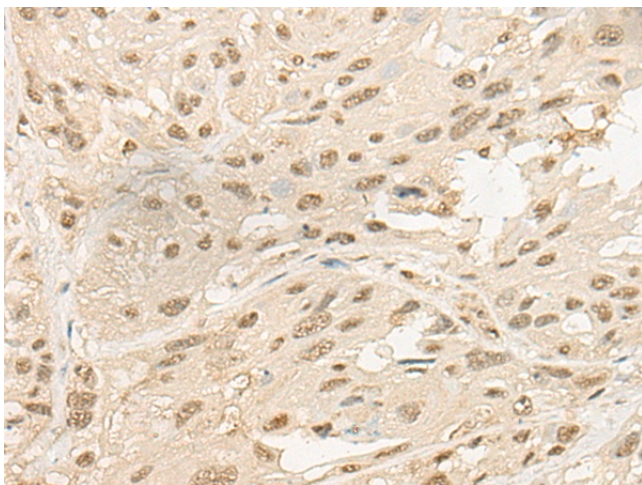
[View online »](#)

Synonyms: FLJ31034; OTTHUMP00000019217; OTTHUMP00000019218; RSP-1; RSP1; Rsu-1

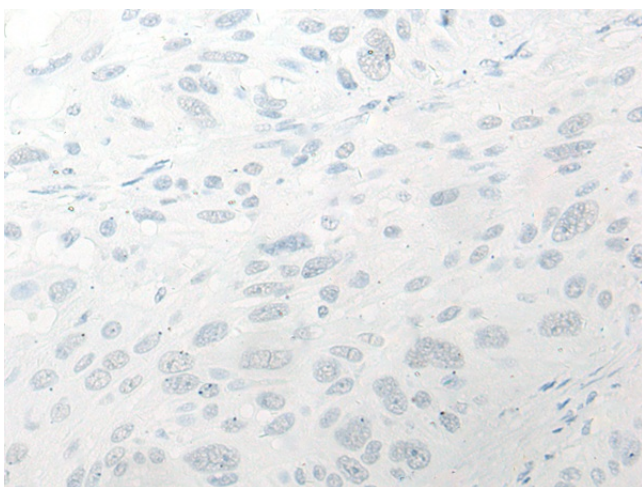
Product images:



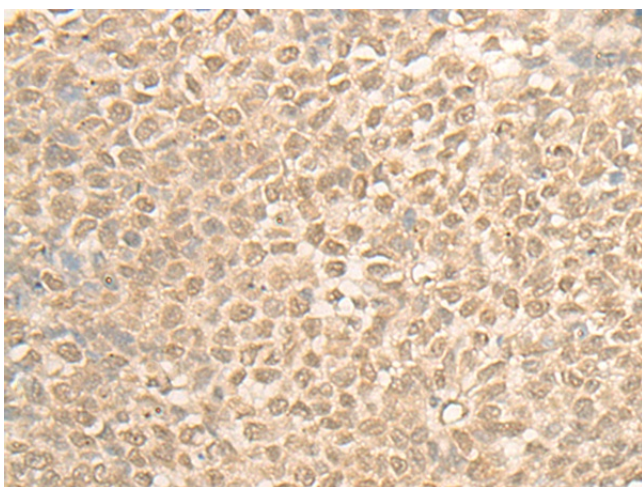
Gel: 8%SDS-PAGE
 Lysate: 40 µg
 Lane 1-5: Lovo
 Jurkat and HEPG2 cell
 Mouse heart tissue and Rat heart tissue lysates
 Primary antibody: [TA365770] (RSU1 Antibody) at dilution 1/300
 Secondary antibody: Goat anti rabbit IgG at 1/8000 dilution
 Exposure time: 3 seconds



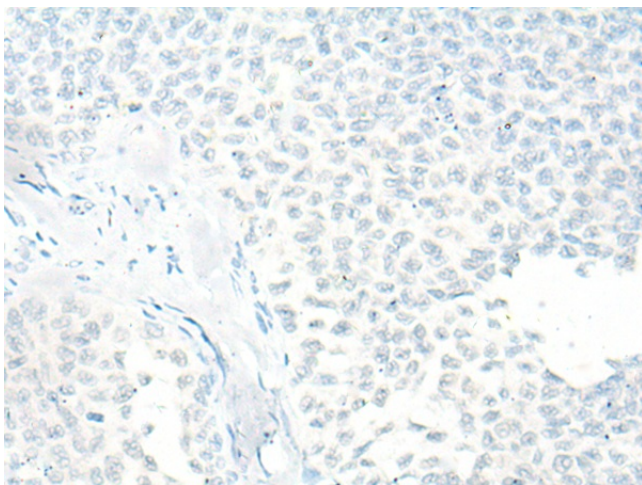
Immunohistochemistry of paraffin-embedded Human esophagus cancer tissue using [TA365770] (RSU1 Antibody) at dilution 1/20 (Original magnification: ×200)



Immunohistochemistry of paraffin-embedded Human esophagus cancer tissue using [TA365770] (RSU1 Antibody) at dilution 1/20, treated with fusion protein. (Original magnification: $\times 200$)



Immunohistochemistry of paraffin-embedded Human ovarian cancer tissue using [TA365770] (RSU1 Antibody) at dilution 1/20 (Original magnification: $\times 200$)



Immunohistochemistry of paraffin-embedded Human ovarian cancer tissue using [TA365770] (RSU1 Antibody) at dilution 1/20, treated with fusion protein. (Original magnification: $\times 200$)