

## Product datasheet for **TA365768**

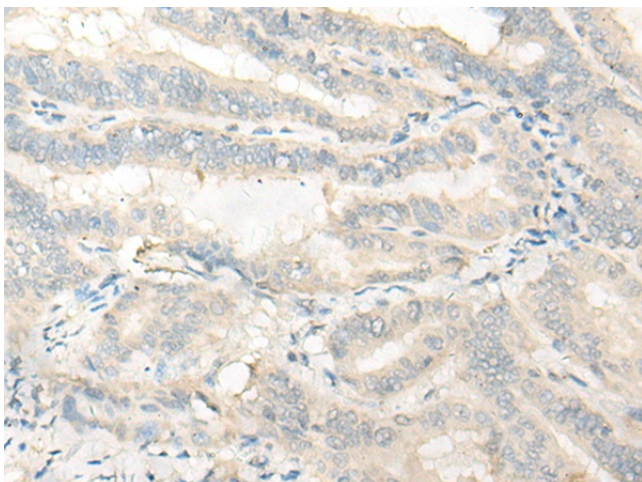
### **C11orf49 Rabbit Polyclonal Antibody**

#### **Product data:**

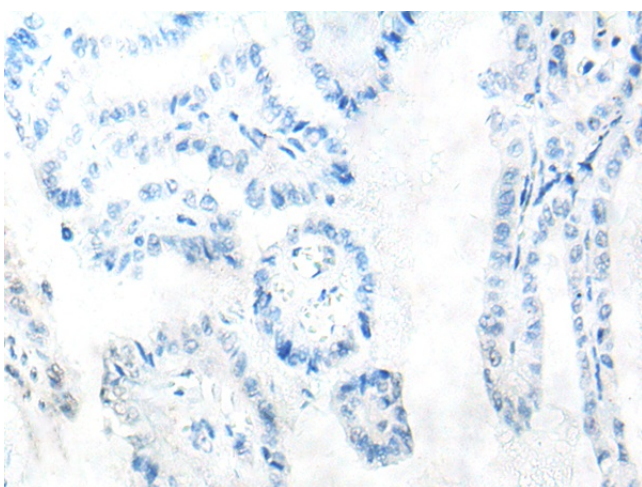
Product Type:	Primary Antibodies
Applications:	IHC
Recommended Dilution:	IHC: 25-100 Positive control: Human thyroid cancer Predicted cell location: Cytoplasm
Reactivity:	Human, Mouse, Rat
Host:	Rabbit
Isotype:	IgG
Clonality:	Polyclonal
Immunogen:	Fusion protein of human C11orf49
Formulation:	pH7.4 PBS, 0.05% NaN <sub>3</sub> , 40% Glycerol
Concentration:	lot specific
Purification:	Antigen affinity purification
Conjugation:	Unconjugated
Storage:	Store at -20°C.
Stability:	1 year
Gene Name:	chromosome 11 open reading frame 49
Database Link:	<a href="#">Entrez Gene 79096 Human Q9H6J7</a>
Background:	The function of this protein remains unknown.
Synonyms:	FLJ22210; MGC4707



[View online »](#)

**Product images:**

Immunohistochemistry of paraffin-embedded Human thyroid cancer tissue using TA365768 (C11orf49 Antibody) at dilution 1/20 (Original magnification:  $\times 200$ )



Immunohistochemistry of paraffin-embedded Human thyroid cancer tissue using TA365768 (C11orf49 Antibody) at dilution 1/20, treated with fusion protein. (Original magnification:  $\times 200$ )