

Product datasheet for **TA365767S**

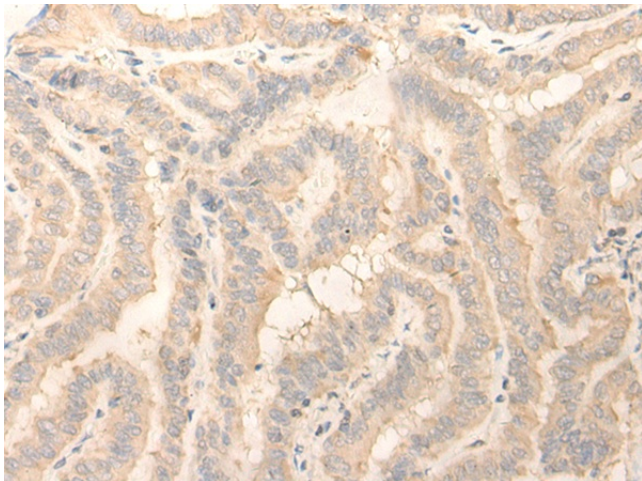
ERP27 Rabbit Polyclonal Antibody

Product data:

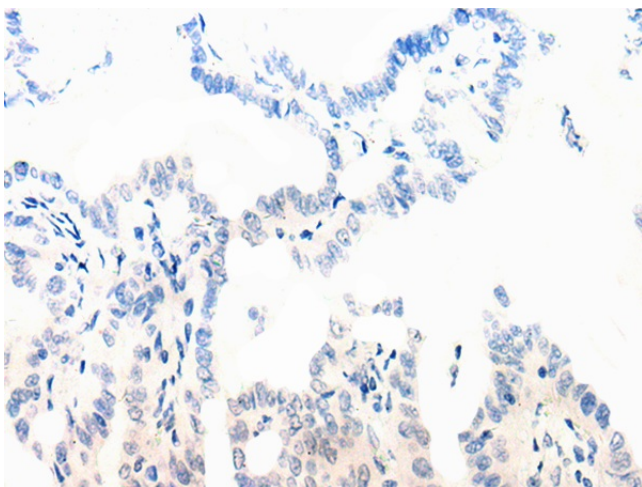
| | |
|-----------------------|--------------------------------------------------------------------------------------------------------------------------------------------------------------------------------|
| Product Type: | Primary Antibodies |
| Applications: | IHC |
| Recommended Dilution: | IHC: 30-150 Positive control: Human thyroid cancer Predicted cell location: Endoplasmic reticulum lumen |
| Reactivity: | Human |
| Host: | Rabbit |
| Isotype: | IgG |
| Clonality: | Polyclonal |
| Immunogen: | Fusion protein of human ERP27 |
| Formulation: | pH7.4 PBS, 0.05% NaN ₃ , 40% Glycerol |
| Purification: | Antigen affinity purification |
| Conjugation: | Unconjugated |
| Storage: | Store at -20°C. |
| Stability: | 1 year |
| Gene Name: | endoplasmic reticulum protein 27 |
| Database Link: | Entrez Gene 121506 Human Q96DNO |
| Background: | ERP27 is a noncatalytic member of the protein disulfide isomerase (PDI; see MIM 608012) family of endoplasmic reticulum (ER) proteins (Alanen et al., 2006 [PubMed 16940051]). |
| Synonyms: | C12orf46; FLJ32115; PDIA8 |



[View online »](#)

Product images:

Immunohistochemistry of paraffin-embedded Human thyroid cancer tissue using [TA365767] (ERP27 Antibody) at dilution 1/25 (Original magnification: $\times 200$)



Immunohistochemistry of paraffin-embedded Human thyroid cancer tissue using [TA365767] (ERP27 Antibody) at dilution 1/25, treated with fusion protein. (Original magnification: $\times 200$)