

## Product datasheet for **TA365763S**

### Elastase 3A (CELA3A) Rabbit Polyclonal Antibody

#### Product data:

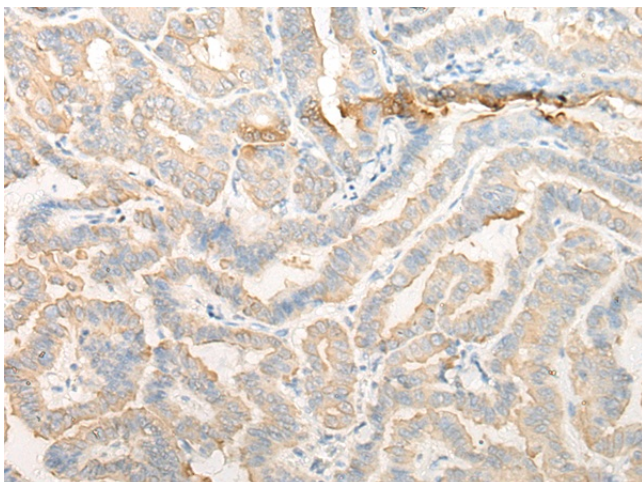
|                       |   |
|-----------------------|---|
| Product Type:         | Primary Antibodies  |
| Applications:         | IHC   |
| Recommended Dilution: | IHC: 30-150<br>Positive control: Human thyroid cancer<br>Predicted cell location: Cytoplasm |
| Reactivity:           | Human   |
| Host:                 | Rabbit  |
| Isotype:              | IgG   |
| Clonality:            | Polyclonal  |
| Immunogen:            | Fusion protein of human CELA3A  |
| Formulation:          | pH7.4 PBS, 0.05% NaN <sub>3</sub> , 40% Glycerol  |
| Purification:         | Antigen affinity purification   |
| Conjugation:          | Unconjugated  |
| Storage:              | Store at -20°C.   |
| Stability:            | 1 year  |
| Gene Name:            | chymotrypsin like elastase family member 3A   |
| Database Link:        | <a href="#">Entrez Gene 10136 Human P09093</a>  |

**Background:** Elastases form a subfamily of serine proteases that hydrolyze many proteins in addition to elastin. Humans have six elastase genes which encode the structurally similar proteins elastase 1, 2, 2A, 2B, 3A, and 3B. Unlike other elastases, elastase 3A has little elastolytic activity. Like most of the human elastases, elastase 3A is secreted from the pancreas as a zymogen and, like other serine proteases such as trypsin, chymotrypsin and kallikrein, it has a digestive function in the intestine. Elastase 3A preferentially cleaves proteins after alanine residues. Elastase 3A may also function in the intestinal transport and metabolism of cholesterol. Both elastase 3A and elastase 3B have been referred to as protease E and as elastase 1.

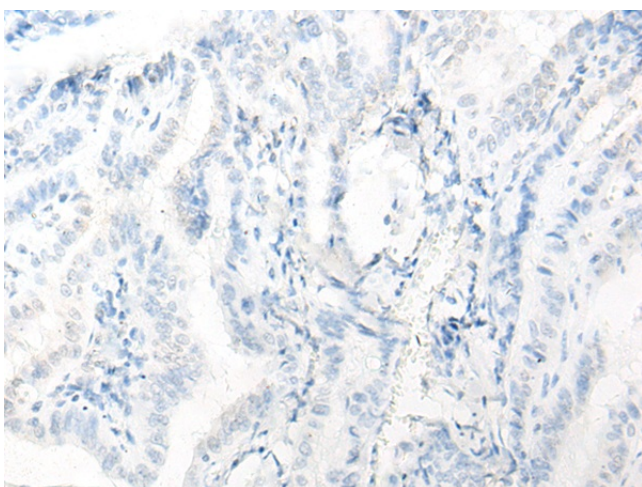
**Synonyms:** ELA3; ELA3A; Elastase-3A



[View online »](#)

**Product images:**

Immunohistochemistry of paraffin-embedded Human thyroid cancer tissue using [TA365763] (CELA3A Antibody) at dilution 1/25 (Original magnification:  $\times 200$ )



Immunohistochemistry of paraffin-embedded Human thyroid cancer tissue using [TA365763] (CELA3A Antibody) at dilution 1/25, treated with fusion protein. (Original magnification:  $\times 200$ )