

Product datasheet for **TA365761**

ITM2B Rabbit Polyclonal Antibody

Product data:

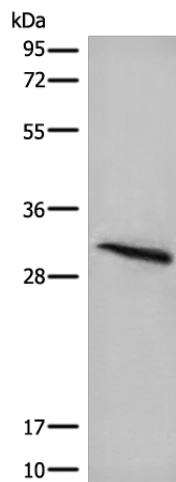
Product Type:	Primary Antibodies
Applications:	WB
Recommended Dilution:	WB: 500-2000 WB positive control: Mouse lung tissue lysate
Reactivity:	Human, Mouse, Rat
Host:	Rabbit
Isotype:	IgG
Clonality:	Polyclonal
Immunogen:	Fusion protein of human ITM2B
Formulation:	pH7.4 PBS, 0.05% NaN ₃ , 40% Glycerol
Concentration:	lot specific
Purification:	Antigen affinity purification
Conjugation:	Unconjugated
Storage:	Store at -20°C.
Stability:	1 year
Predicted Protein Size:	30 kDa
Gene Name:	integral membrane protein 2B
Database Link:	Entrez Gene 9445 Human Q9Y287

Background: Amyloid precursor proteins are processed by beta-secretase and gamma-secretase to produce beta-amyloid peptides which form the characteristic plaques of Alzheimer disease. This gene encodes a transmembrane protein which is processed at the C-terminus by furin or furin-like proteases to produce a small secreted peptide which inhibits the deposition of beta-amyloid. Mutations which result in extension of the C-terminal end of the encoded protein, thereby increasing the size of the secreted peptide, are associated with two neurodegenerative diseases, familial British dementia and familial Danish dementia.

Synonyms: ABRI; BRI; BRI2; BRICD2B; E3-16; E25B; FBD



[View online »](#)

Product images:

Gel: 12%SDS-PAGE

Lysate: 40 µg

Lane: Mouse lung tissue lysate

Primary antibody: TA365761 (ITM2B Antibody) at dilution 1/400

Secondary antibody: Goat anti rabbit IgG at 1/8000 dilution

Exposure time: 2 minutes