

Product datasheet for **TA365757S**

HLA DMB (HLA-DMB) Rabbit Polyclonal Antibody

Product data:

Product Type:	Primary Antibodies
Applications:	IHC, WB
Recommended Dilution:	WB: 500-2000 WB positive control: K562 and Jurkat cell lysates IHC: 30-150 Positive control: Human prostate cancer Predicted cell location: Cell membrane
Reactivity:	Human
Host:	Rabbit
Isotype:	IgG
Clonality:	Polyclonal
Immunogen:	Fusion protein of human HLA-DMB
Formulation:	pH7.4 PBS, 0.05% NaN ₃ , 40% Glycerol
Purification:	Antigen affinity purification
Conjugation:	Unconjugated
Storage:	Store at -20°C.
Stability:	1 year
Predicted Protein Size:	29 kDa
Gene Name:	major histocompatibility complex, class II, DM beta
Database Link:	Entrez Gene 3109 Human P28068



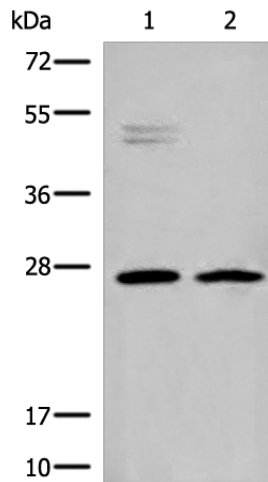
[View online »](#)

Background:

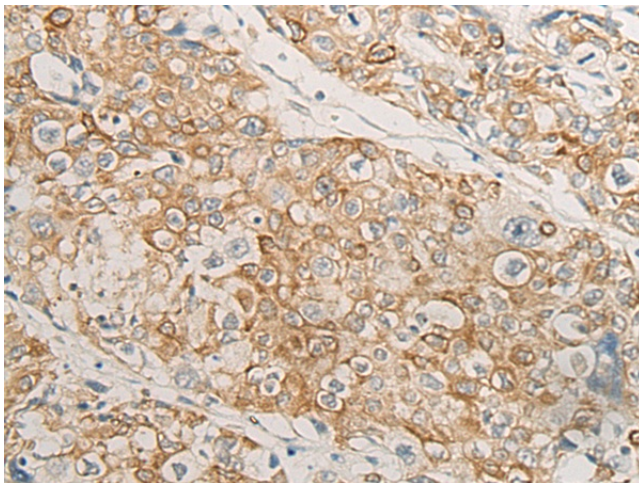
HLA-DMB belongs to the HLA class II beta chain paralogues. This class II molecule is a heterodimer consisting of an alpha (DMA) and a beta (DMB) chain, both anchored in the membrane. It is located in intracellular vesicles. DM plays a central role in the peptide loading of MHC class II molecules by helping to release the CLIP (class II-associated invariant chain peptide) molecule from the peptide binding site. Class II molecules are expressed in antigen presenting cells (APC: B lymphocytes, dendritic cells, macrophages). The beta chain is approximately 26-28 kDa and its gene contains 6 exons. Exon one encodes the leader peptide, exons 2 and 3 encode the two extracellular domains, exon 4 encodes the transmembrane domain and exon 5 encodes the cytoplasmic tail.

Synonyms:

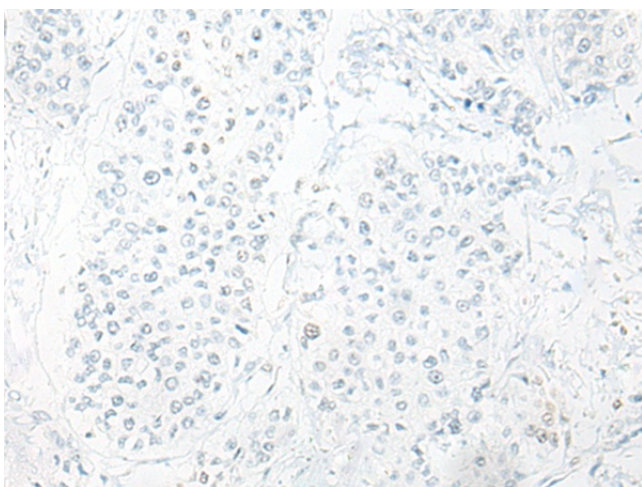
D6S221E; RING7

Product images:


Gel: 12%SDS-PAGE
 Lysate: 40 µg
 Lane 1-2: K562 and Jurkat cell lysates
 Primary antibody: [TA365757] (HLA-DMB Antibody) at dilution 1/550
 Secondary antibody: Goat anti rabbit IgG at 1/8000 dilution
 Exposure time: 10 seconds



Immunohistochemistry of paraffin-embedded Human prostate cancer tissue using [TA365757] (HLA-DMB Antibody) at dilution 1/40 (Original magnification: ×200)



Immunohistochemistry of paraffin-embedded Human prostate cancer tissue using [TA365757] (HLA-DMB Antibody) at dilution 1/40, treated with fusion protein. (Original magnification: ×200)