

## Product datasheet for **TA365757**

### HLA DMB (HLA-DMB) Rabbit Polyclonal Antibody

#### Product data:

Product Type:	Primary Antibodies
Applications:	IHC, WB
Recommended Dilution:	WB: 500-2000 WB positive control: K562 and Jurkat cell lysates IHC: 30-150 Positive control: Human prostate cancer Predicted cell location: Cell membrane
Reactivity:	Human
Host:	Rabbit
Isotype:	IgG
Clonality:	Polyclonal
Immunogen:	Fusion protein of human HLA-DMB
Formulation:	pH7.4 PBS, 0.05% NaN <sub>3</sub> , 40% Glycerol
Concentration:	lot specific
Purification:	Antigen affinity purification
Conjugation:	Unconjugated
Storage:	Store at -20°C.
Stability:	1 year
Predicted Protein Size:	29 kDa
Gene Name:	major histocompatibility complex, class II, DM beta
Database Link:	<a href="#">Entrez Gene 3109 Human P28068</a>



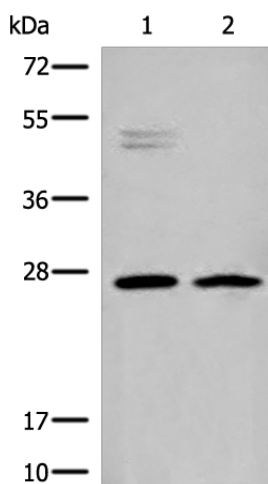
[View online »](#)

**Background:**

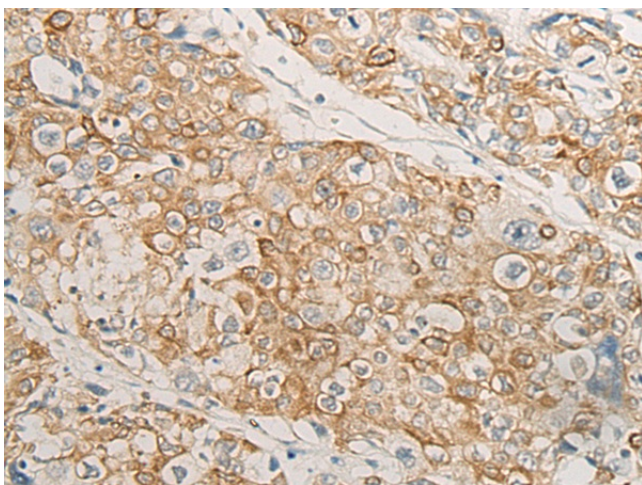
HLA-DMB belongs to the HLA class II beta chain paralogues. This class II molecule is a heterodimer consisting of an alpha (DMA) and a beta (DMB) chain, both anchored in the membrane. It is located in intracellular vesicles. DM plays a central role in the peptide loading of MHC class II molecules by helping to release the CLIP (class II-associated invariant chain peptide) molecule from the peptide binding site. Class II molecules are expressed in antigen presenting cells (APC: B lymphocytes, dendritic cells, macrophages). The beta chain is approximately 26-28 kDa and its gene contains 6 exons. Exon one encodes the leader peptide, exons 2 and 3 encode the two extracellular domains, exon 4 encodes the transmembrane domain and exon 5 encodes the cytoplasmic tail.

**Synonyms:**

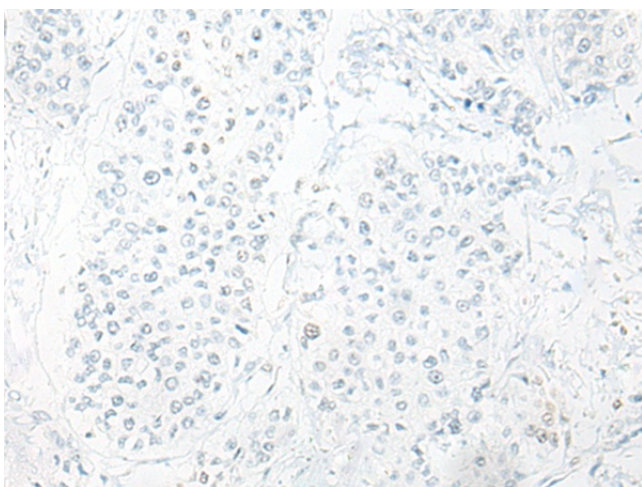
D6S221E; RING7

**Product images:**

Gel: 12%SDS-PAGE  
Lysate: 40 µg  
Lane 1-2: K562 and Jurkat cell lysates  
Primary antibody: TA365757 (HLA-DMB Antibody) at dilution 1/550  
Secondary antibody: Goat anti rabbit IgG at 1/8000 dilution  
Exposure time: 10 seconds



Immunohistochemistry of paraffin-embedded Human prostate cancer tissue using TA365757 (HLA-DMB Antibody) at dilution 1/40 (Original magnification: x200)



Immunohistochemistry of paraffin-embedded Human prostate cancer tissue using TA365757 (HLA-DMB Antibody) at dilution 1/40, treated with fusion protein. (Original magnification:  $\times 200$ )