

Product datasheet for **TA365746**

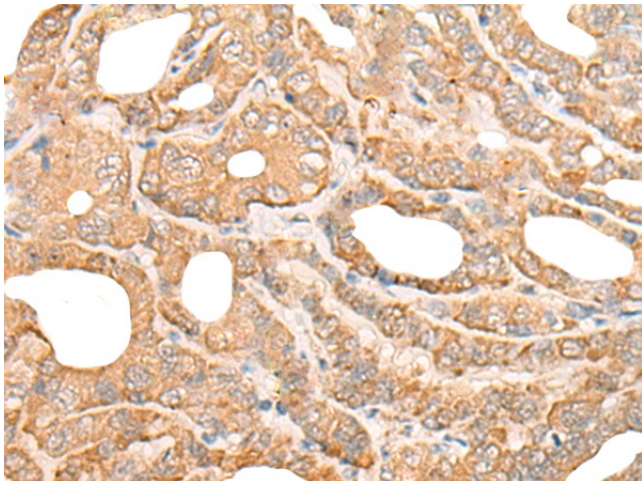
DEF8 Rabbit Polyclonal Antibody

Product data:

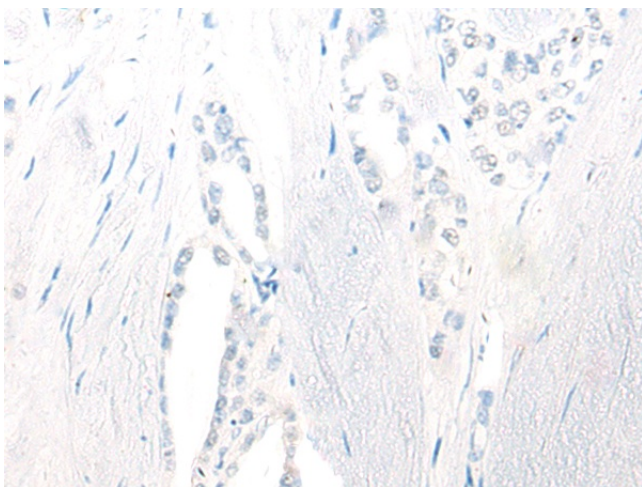
Product Type:	Primary Antibodies
Applications:	IHC
Recommended Dilution:	IHC: 30-150 Positive control: Human thyroid cancer Predicted cell location: Cytoplasm and Cell membrane
Reactivity:	Human
Host:	Rabbit
Isotype:	IgG
Clonality:	Polyclonal
Immunogen:	Full length fusion protein
Formulation:	pH7.4 PBS, 0.05% NaN ₃ , 40% Glycerol
Concentration:	lot specific
Purification:	Antigen affinity purification
Conjugation:	Unconjugated
Storage:	Store at -20°C.
Stability:	1 year
Gene Name:	differentially expressed in FDCP 8 homolog (mouse)
Database Link:	Entrez Gene 54849 Human Q6ZN54
Background:	The function of this protein remains unknown.
Synonyms:	DEF-8; FLJ20186; MGC104349



[View online »](#)

Product images:

Immunohistochemistry of paraffin-embedded Human thyroid cancer tissue using TA365746 (DEF8 Antibody) at dilution 1/25 (Original magnification: $\times 200$)



Immunohistochemistry of paraffin-embedded Human thyroid cancer tissue using TA365746 (DEF8 Antibody) at dilution 1/25, treated with fusion protein. (Original magnification: $\times 200$)