

Product datasheet for **TA365738S**

DDX27 Rabbit Polyclonal Antibody

Product data:

| | |
|-------------------------|---|
| Product Type: | Primary Antibodies |
| Applications: | IHC, WB |
| Recommended Dilution: | WB: 200-1000 WB positive control: HEPG2/Hela and K562 cell lysates IHC: 20-100 Positive control: Human prostate cancer Predicted cell location: Nucleus and Cytoplasm |
| Reactivity: | Human, Mouse |
| Host: | Rabbit |
| Isotype: | IgG |
| Clonality: | Polyclonal |
| Immunogen: | Fusion protein of human DDX27 |
| Formulation: | pH7.4 PBS, 0.05% NaN ₃ , 40% Glycerol |
| Purification: | Antigen affinity purification |
| Conjugation: | Unconjugated |
| Storage: | Store at -20°C. |
| Stability: | 1 year |
| Predicted Protein Size: | 90 kDa |
| Gene Name: | DEAD-box helicase 27 |
| Database Link: | Entrez Gene 55661 Human Q96GQ7 |

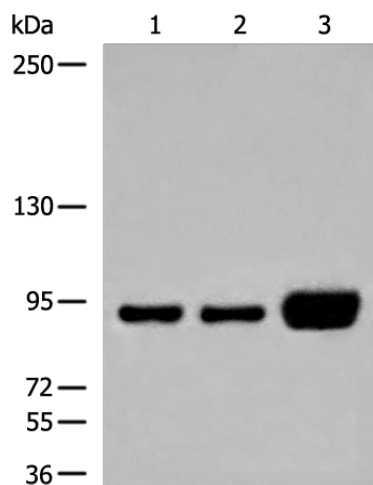
Background: DEAD box proteins, characterized by the conserved motif Asp-Glu-Ala-Asp (DEAD), are putative RNA helicases. They are implicated in a number of cellular processes involving alteration of RNA secondary structure such as translation initiation, nuclear and mitochondrial splicing, and ribosome and spliceosome assembly. Based on their distribution patterns, some members of this family are believed to be involved in embryogenesis, spermatogenesis, and cellular growth and division. This gene encodes a DEAD box protein, the function of which has not been determined.



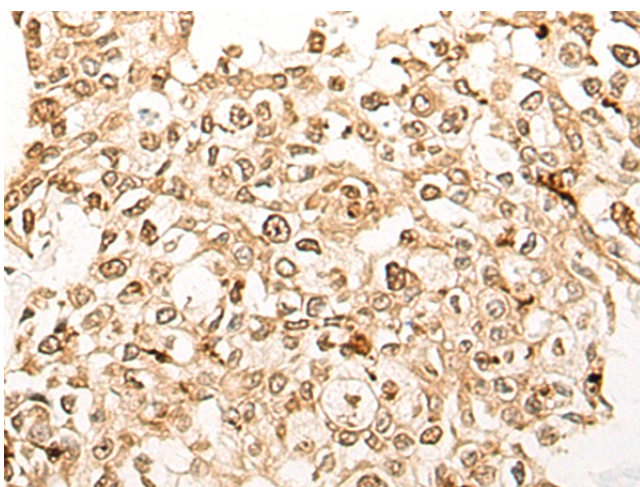
[View online »](#)

Synonyms: dj686N3.1; DKFZp667N057; FLJ12917; FLJ20596; FLJ22238; HSPC259; MGC1018; MGC163147; PP3241; RHLF; Rrp3p

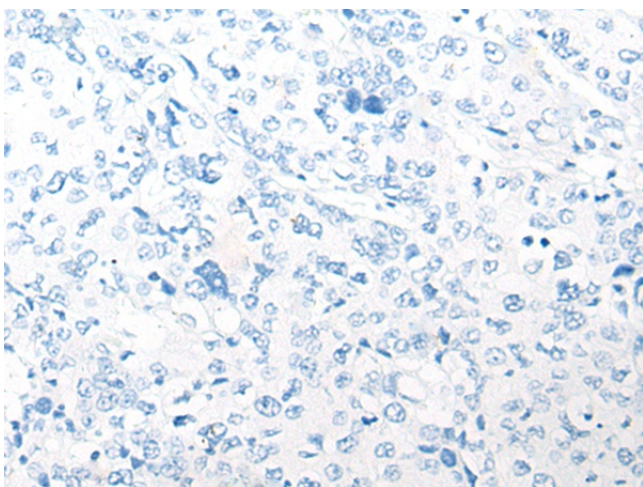
Product images:



Gel: 6%SDS-PAGE
 Lysate: 40 µg
 Lane 1-3: HEPG2
 HeLa and K562 cell lysates
 Primary antibody: [TA365738] (DDX27 Antibody) at dilution 1/250
 Secondary antibody: Goat anti rabbit IgG at 1/8000 dilution
 Exposure time: 2 seconds



Immunohistochemistry of paraffin-embedded Human prostate cancer tissue using [TA365738] (DDX27 Antibody) at dilution 1/20 (Original magnification: ×200)



Immunohistochemistry of paraffin-embedded Human prostate cancer tissue using [TA365738] (DDX27 Antibody) at dilution 1/20, treated with fusion protein. (Original magnification: $\times 200$)