

Product datasheet for **TA365738**

DDX27 Rabbit Polyclonal Antibody

Product data:

Product Type:	Primary Antibodies
Applications:	IHC, WB
Recommended Dilution:	WB: 200-1000 WB positive control: HEPG2□Hela and K562 cell lysates IHC: 20-100 Positive control: Human prostate cancer Predicted cell location: Nucleus and Cytoplasm
Reactivity:	Human, Mouse
Host:	Rabbit
Isotype:	IgG
Clonality:	Polyclonal
Immunogen:	Fusion protein of human DDX27
Formulation:	pH7.4 PBS, 0.05% NaN ₃ , 40% Glycerol
Concentration:	lot specific
Purification:	Antigen affinity purification
Conjugation:	Unconjugated
Storage:	Store at -20°C.
Stability:	1 year
Predicted Protein Size:	90 kDa
Gene Name:	DEAD-box helicase 27
Database Link:	Entrez Gene 55661 Human Q96GQ7



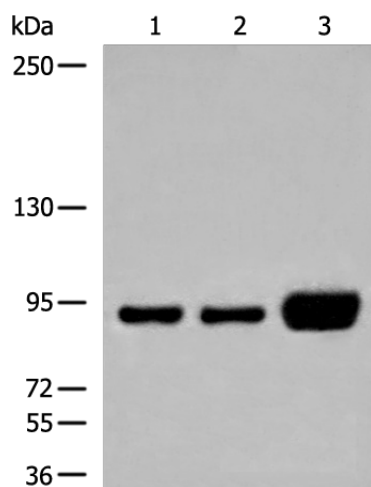
[View online »](#)

Background:

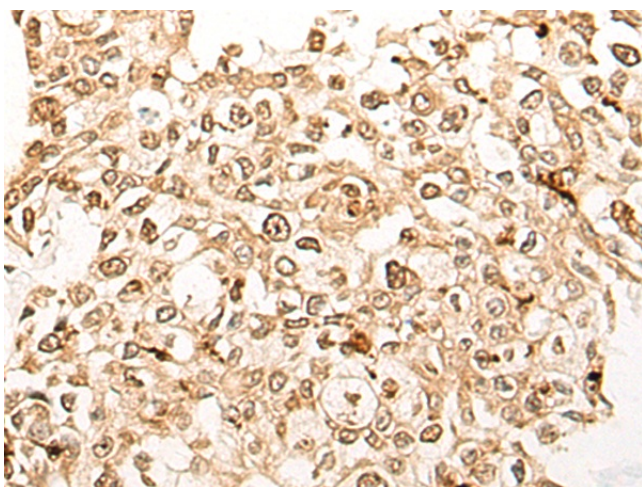
DEAD box proteins, characterized by the conserved motif Asp-Glu-Ala-Asp (DEAD), are putative RNA helicases. They are implicated in a number of cellular processes involving alteration of RNA secondary structure such as translation initiation, nuclear and mitochondrial splicing, and ribosome and spliceosome assembly. Based on their distribution patterns, some members of this family are believed to be involved in embryogenesis, spermatogenesis, and cellular growth and division. This gene encodes a DEAD box protein, the function of which has not been determined.

Synonyms:

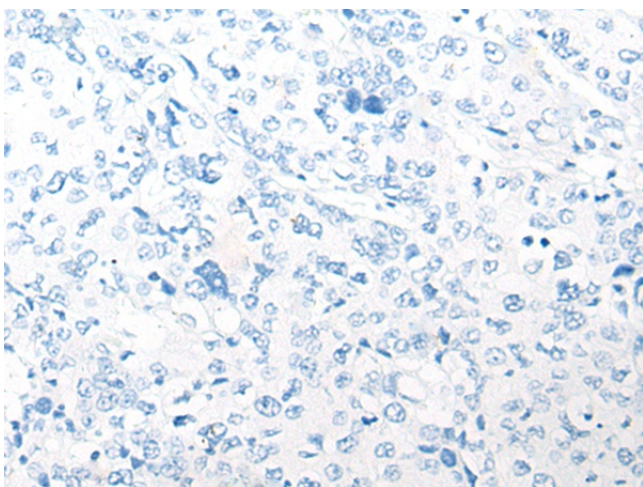
dj686N3.1; DKFZp667N057; FLJ12917; FLJ20596; FLJ22238; HSPC259; MGC1018; MGC163147; PP3241; RHLPL; Rrp3p

Product images:

Gel: 6%SDS-PAGE
Lysate: 40 µg
Lane 1-3: HEPG2
Hela and K562 cell lysates
Primary antibody: TA365738 (DDX27 Antibody) at dilution 1/250
Secondary antibody: Goat anti rabbit IgG at 1/8000 dilution
Exposure time: 2 seconds



Immunohistochemistry of paraffin-embedded Human prostate cancer tissue using TA365738 (DDX27 Antibody) at dilution 1/20 (Original magnification: ×200)



Immunohistochemistry of paraffin-embedded Human prostate cancer tissue using TA365738 (DDX27 Antibody) at dilution 1/20, treated with fusion protein. (Original magnification: ×200)