

## Product datasheet for **TA365731S**

### DDI2 Rabbit Polyclonal Antibody

#### Product data:

**Product Type:** Primary Antibodies  
**Applications:** IHC  
**Recommended Dilution:** IHC: 50-300  
Positive control: Human liver cancer  
Predicted cell location: Cytoplasm and Nucleus

**Reactivity:** Human, Mouse

**Host:** Rabbit

**Isotype:** IgG

**Clonality:** Polyclonal

**Immunogen:** Fusion protein of human DDI2

**Formulation:** pH7.4 PBS, 0.05% NaN<sub>3</sub>, 40% Glycerol

**Purification:** Antigen affinity purification

**Conjugation:** Unconjugated

**Storage:** Store at -20°C.

**Stability:** 1 year

**Gene Name:** DNA damage inducible 1 homolog 2

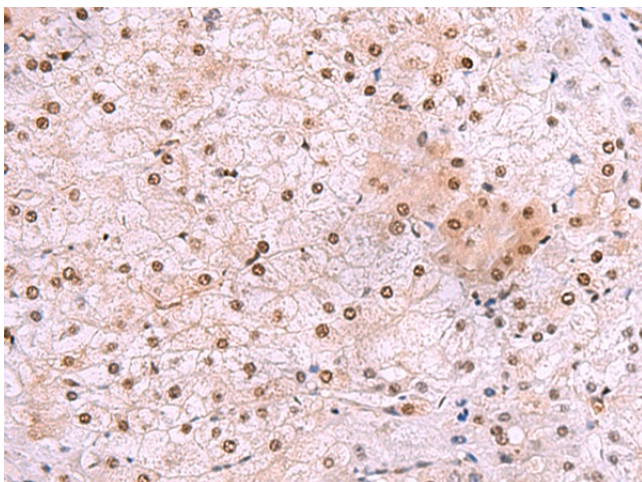
**Database Link:** [Entrez Gene 84301 Human Q5TDH0](#)

**Background:** DDI1 and DDI2 are ubiquitin receptor homologs of the *Saccharomyces cerevisiae* ddi1 protein, which is involved in regulation of the cell cycle and the late secretory pathway. DDI2 is a 399 amino acid protein that contains one ubiquitin-like domain and exists as three isoforms as a result of alternative splicing. The gene encoding DDI2 maps to human chromosome 1, the largest human chromosome which spans about 260 million base pairs and makes up 8% of the human genome. Other notable genes located on chromosome 1 include LMNA, which is associated with the rare aging disease Hutchinson-Gilford progeria, and the MUTYH gene, which is partially responsible for familial adenomatous polyposis. Stickler syndrome, Parkinsons, Gaucher disease and Usher syndrome.

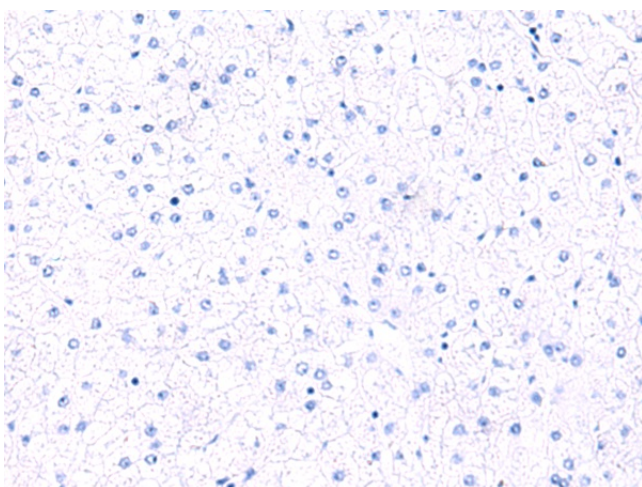
**Synonyms:** MGC14844; RP4-680D5.5



[View online »](#)

**Product images:**


Immunohistochemistry of paraffin-embedded Human liver cancer tissue using [TA365731] (DDI2 Antibody) at dilution 1/50 (Original magnification: ×200)



Immunohistochemistry of paraffin-embedded Human liver cancer tissue using [TA365731] (DDI2 Antibody) at dilution 1/50, treated with fusion protein. (Original magnification: ×200)