

## Product datasheet for **TA365731**

### DDI2 Rabbit Polyclonal Antibody

#### Product data:

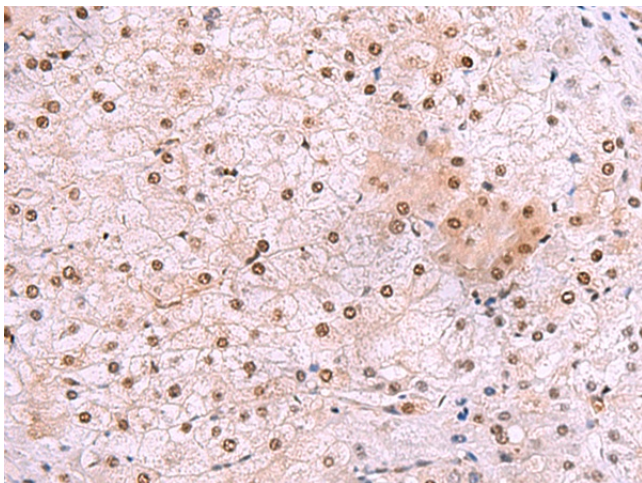
|                       |  |
|-----------------------|--|
| Product Type:         | Primary Antibodies   |
| Applications:         | IHC  |
| Recommended Dilution: | IHC: 50-300<br>Positive control: Human liver cancer<br>Predicted cell location: Cytoplasm and Nucleus  |
| Reactivity:           | Human, Mouse   |
| Host:                 | Rabbit   |
| Isotype:              | IgG  |
| Clonality:            | Polyclonal   |
| Immunogen:            | Fusion protein of human DDI2   |
| Formulation:          | pH7.4 PBS, 0.05% NaN <sub>3</sub> , 40% Glycerol   |
| Concentration:        | lot specific   |
| Purification:         | Antigen affinity purification  |
| Conjugation:          | Unconjugated   |
| Storage:              | Store at -20°C.  |
| Stability:            | 1 year   |
| Gene Name:            | DNA damage inducible 1 homolog 2   |
| Database Link:        | <a href="#">Entrez Gene 84301 Human Q5TDH0</a>   |
| Background:           | DDI1 and DDI2 are ubiquitin receptor homologs of the <i>Saccharomyces cerevisiae</i> ddi1 protein, which is involved in regulation of the cell cycle and the late secretory pathway. DDI2 is a 399 amino acid protein that contains one ubiquitin-like domain and exists as three isoforms as a result of alternative splicing. The gene encoding DDI2 maps to human chromosome 1, the largest human chromosome which spans about 260 million base pairs and makes up 8% of the human genome. Other notable genes located on chromosome 1 include LMNA, which is associated with the rare aging disease Hutchinson-Gilford progeria, and the MUTYH gene, which is partially responsible for familial adenomatous polyposis. Stickler syndrome, Parkinsons, Gaucher disease and Usher syndrome. |



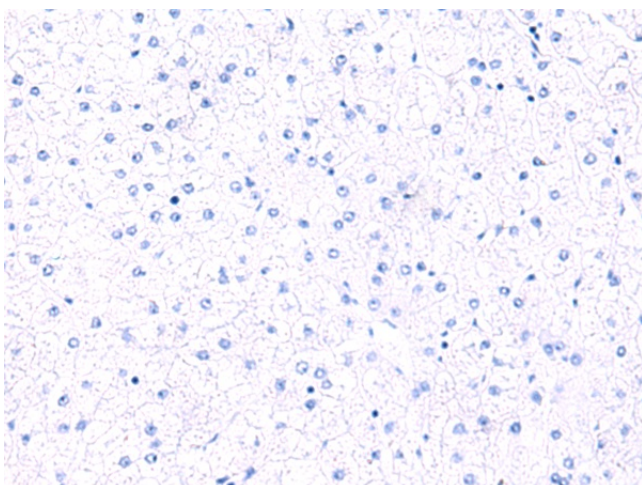
[View online »](#)

Synonyms: MGC14844; RP4-680D5.5

### Product images:



Immunohistochemistry of paraffin-embedded Human liver cancer tissue using TA365731 (DDI2 Antibody) at dilution 1/50 (Original magnification: ×200)



Immunohistochemistry of paraffin-embedded Human liver cancer tissue using TA365731 (DDI2 Antibody) at dilution 1/50, treated with fusion protein. (Original magnification: ×200)