

## Product datasheet for **TA365725S**

### DCBLD1 Rabbit Polyclonal Antibody

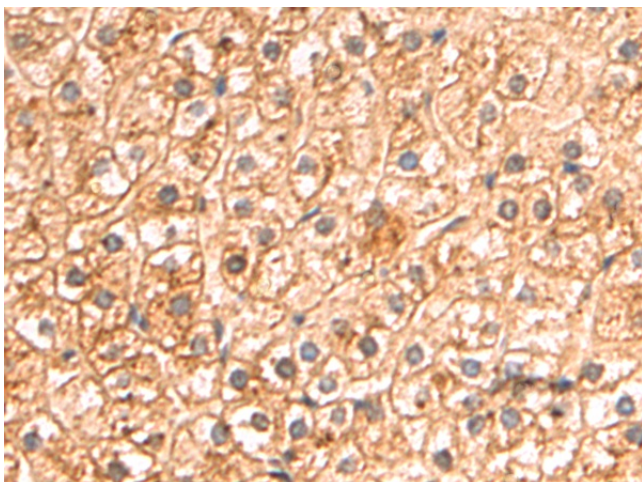
#### Product data:

|                       |   |
|-----------------------|---|
| Product Type:         | Primary Antibodies  |
| Applications:         | IHC   |
| Recommended Dilution: | IHC: 50-200<br>Positive control: Human liver cancer<br>Predicted cell location: Cytoplasm and Cell membrane |
| Reactivity:           | Human   |
| Host:                 | Rabbit  |
| Isotype:              | IgG   |
| Clonality:            | Polyclonal  |
| Immunogen:            | Fusion protein of human DCBLD1  |
| Formulation:          | pH7.4 PBS, 0.05% NaN <sub>3</sub> , 40% Glycerol  |
| Purification:         | Antigen affinity purification   |
| Conjugation:          | Unconjugated  |
| Storage:              | Store at -20°C.   |
| Stability:            | 1 year  |
| Gene Name:            | discoidin, CUB and LCCL domain containing 1   |
| Database Link:        | <a href="#">Entrez Gene 285761 Human Q8N8Z6</a>   |
| Background:           | The specific function of the protein remains unknown.   |
| Synonyms:             | dj94G16.1; DKFZp686L21135; MGC46341   |

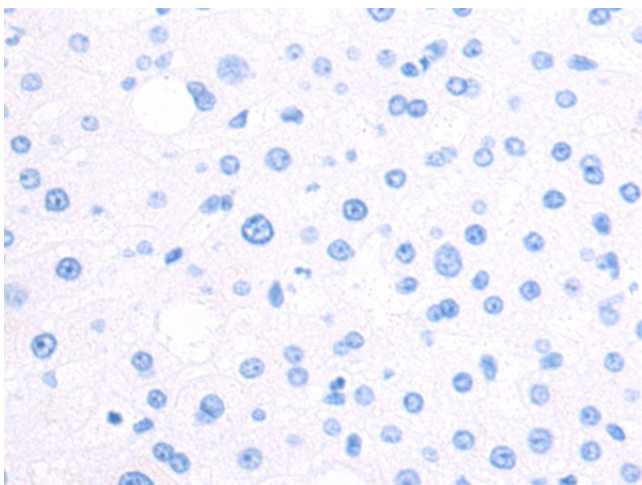


[View online »](#)

## Product images:



Immunohistochemistry of paraffin-embedded Human liver cancer tissue using [TA365725] (DCBLD1 Antibody) at dilution 1/60 (Original magnification: ×200)



Immunohistochemistry of paraffin-embedded Human liver cancer tissue using [TA365725] (DCBLD1 Antibody) at dilution 1/60, treated with fusion protein. (Original magnification: ×200)