

Product datasheet for **TA365725**

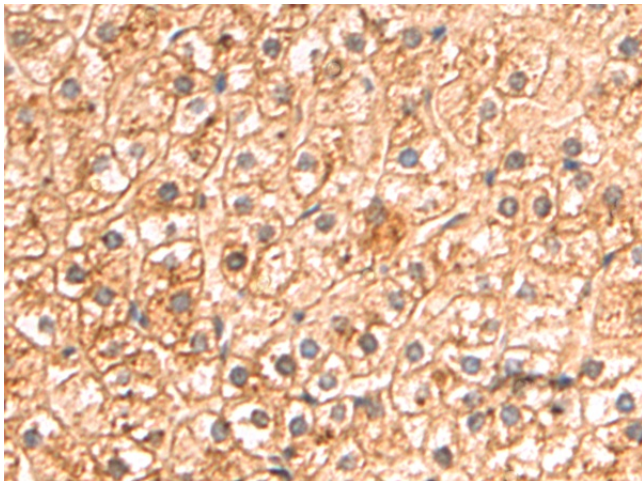
DCBLD1 Rabbit Polyclonal Antibody

Product data:

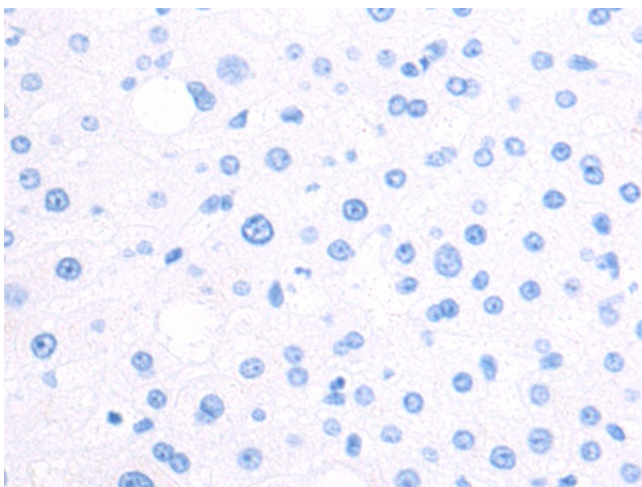
Product Type:	Primary Antibodies
Applications:	IHC
Recommended Dilution:	IHC: 50-200 Positive control: Human liver cancer Predicted cell location: Cytoplasm and Cell membrane
Reactivity:	Human
Host:	Rabbit
Isotype:	IgG
Clonality:	Polyclonal
Immunogen:	Fusion protein of human DCBLD1
Formulation:	pH7.4 PBS, 0.05% NaN ₃ , 40% Glycerol
Concentration:	lot specific
Purification:	Antigen affinity purification
Conjugation:	Unconjugated
Storage:	Store at -20°C.
Stability:	1 year
Gene Name:	discoidin, CUB and LCCL domain containing 1
Database Link:	Entrez Gene 285761 Human Q8N8Z6
Background:	The specific function of the protein remains unknown.
Synonyms:	dj94G16.1; DKFZp686L21135; MGC46341



[View online »](#)

Product images:

Immunohistochemistry of paraffin-embedded Human liver cancer tissue using TA365725 (DCBLD1 Antibody) at dilution 1/60 (Original magnification: $\times 200$)



Immunohistochemistry of paraffin-embedded Human liver cancer tissue using TA365725 (DCBLD1 Antibody) at dilution 1/60, treated with fusion protein. (Original magnification: $\times 200$)