

Product datasheet for **TA365706S**

CYB5R1 Rabbit Polyclonal Antibody

Product data:

| | |
|-------------------------|---|
| Product Type: | Primary Antibodies |
| Applications: | IHC, WB |
| Recommended Dilution: | WB: 200-1000 WB positive control: HEPG2, HeLa, K562 and PC-3 cell lysates IHC: 25-100 Positive control: Human thyroid cancer Predicted cell location: Cytoplasm and Cell membrane |
| Reactivity: | Human, Mouse, Rat |
| Host: | Rabbit |
| Isotype: | IgG |
| Clonality: | Polyclonal |
| Immunogen: | Fusion protein of human CYB5R1 |
| Formulation: | pH7.4 PBS, 0.05% NaN ₃ , 40% Glycerol |
| Purification: | Antigen affinity purification |
| Conjugation: | Unconjugated |
| Storage: | Store at -20°C. |
| Stability: | 1 year |
| Predicted Protein Size: | 34 kDa |
| Gene Name: | cytochrome b5 reductase 1 |
| Database Link: | Entrez Gene 51706 Human Q9UHQ9 |



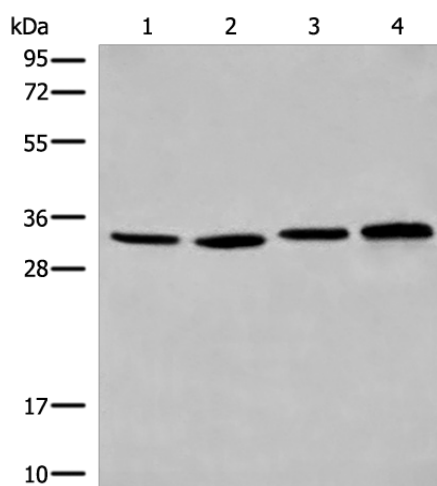
[View online »](#)

Background:

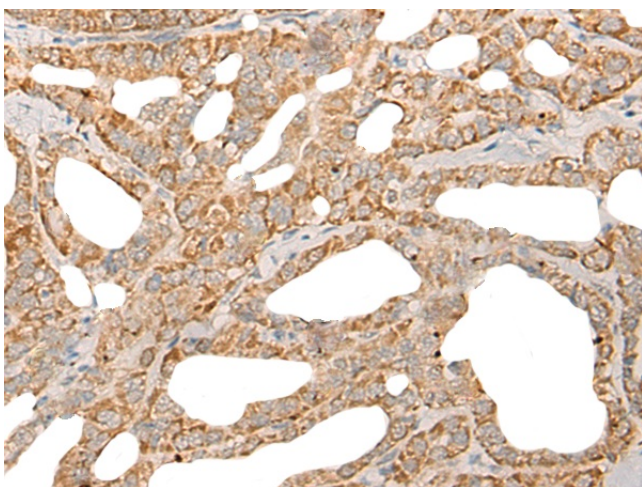
NADH-cytochrome b5 reductases participate in a variety of physiological processes including biosynthesis of cholesterol, methemoglobin reduction of erythrocytes, elongation of fatty acids and metabolism of drugs. CYB5R1 (cytochrome b5 reductase 1), also known as NADH-cytochrome b5 reductase 1, B5R1, NQO3A2, humb5R2 or NAD(P)H:quinone oxidoreductase type 3 polypeptide A2, is a 305 amino acid single-pass membrane protein that contains one FAD-binding FR-type domain and belongs to the flavoprotein pyridine nucleotide cytochrome reductase family. Widely expressed, CYB5R1 binds FAD as a cofactor and is encoded by a gene located on human chromosome 1. Human chromosome 1 spans 260 million base pairs, contains over 3,000 genes, comprises nearly 8% of the human genome and houses a large number of disease-associated genes, including those that are involved in familial adenomatous polyposis, Stickler syndrome, Parkinson's disease, Gaucher disease, schizophrenia and Usher syndrome.

Synonyms:

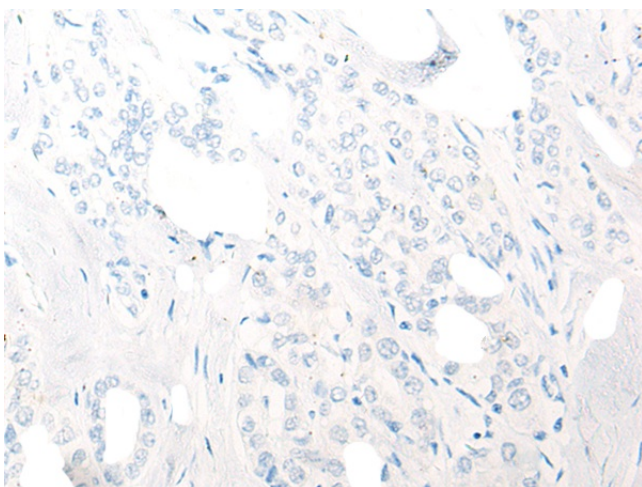
B5R.1; B5R1; humb5R2; NQO3A2

Product images:

Gel: 12%SDS-PAGE
Lysate: 40 µg
Lane 1-4: HEPG2
Hela
K562 and PC-3 cell lysates
Primary antibody: [TA365706] (CYB5R1 Antibody)
at dilution 1/300
Secondary antibody: Goat anti rabbit IgG at
1/8000 dilution
Exposure time: 5 seconds



Immunohistochemistry of paraffin-embedded Human thyroid cancer tissue using [TA365706] (CYB5R1 Antibody) at dilution 1/30 (Original magnification: $\times 200$)



Immunohistochemistry of paraffin-embedded Human thyroid cancer tissue using [TA365706] (CYB5R1 Antibody) at dilution 1/30, treated with fusion protein. (Original magnification: $\times 200$)