

## Product datasheet for **TA365706**

### **CYB5R1 Rabbit Polyclonal Antibody**

#### **Product data:**

Product Type:	Primary Antibodies
Applications:	IHC, WB
Recommended Dilution:	WB: 200-1000 WB positive control: HEPG2, Hela, K562 and PC-3 cell lysates IHC: 25-100 Positive control: Human thyroid cancer Predicted cell location: Cytoplasm and Cell membrane
Reactivity:	Human, Mouse, Rat
Host:	Rabbit
Isotype:	IgG
Clonality:	Polyclonal
Immunogen:	Fusion protein of human CYB5R1
Formulation:	pH7.4 PBS, 0.05% NaN <sub>3</sub> , 40% Glycerol
Concentration:	lot specific
Purification:	Antigen affinity purification
Conjugation:	Unconjugated
Storage:	Store at -20°C.
Stability:	1 year
Predicted Protein Size:	34 kDa
Gene Name:	cytochrome b5 reductase 1
Database Link:	<a href="#">Entrez Gene 51706 Human Q9UHQ9</a>



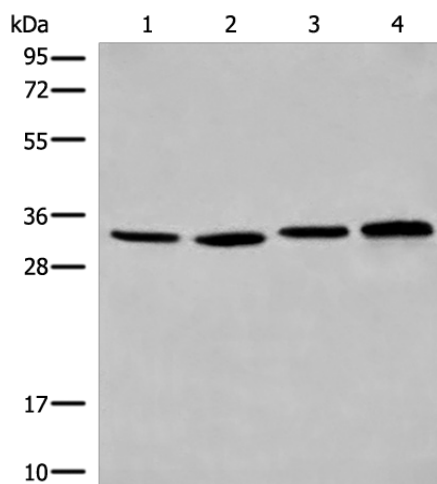
[View online »](#)

**Background:**

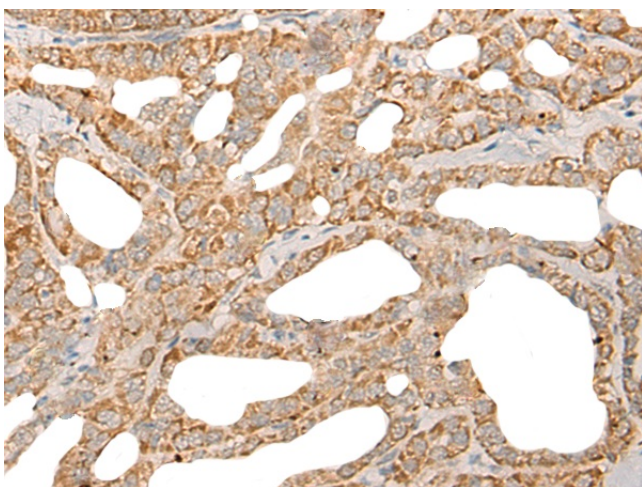
NADH-cytochrome b5 reductases participate in a variety of physiological processes including biosynthesis of cholesterol, methemoglobin reduction of erythrocytes, elongation of fatty acids and metabolism of drugs. CYB5R1 (cytochrome b5 reductase 1, B5R1, NQO3A2, humb5R2 or NAD(P)H:quinone oxidoreductase type 3 polypeptide A2, is a 305 amino acid single-pass membrane protein that contains one FAD-binding FR-type domain and belongs to the flavoprotein pyridine nucleotide cytochrome reductase family. Widely expressed, CYB5R1 binds FAD as a cofactor and is encoded by a gene located on human chromosome 1. Human chromosome 1 spans 260 million base pairs, contains over 3,000 genes, comprises nearly 8% of the human genome and houses a large number of disease-associated genes, including those that are involved in familial adenomatous polyposis, Stickler syndrome, Parkinson's disease, Gaucher disease, schizophrenia and Usher syndrome.

**Synonyms:**

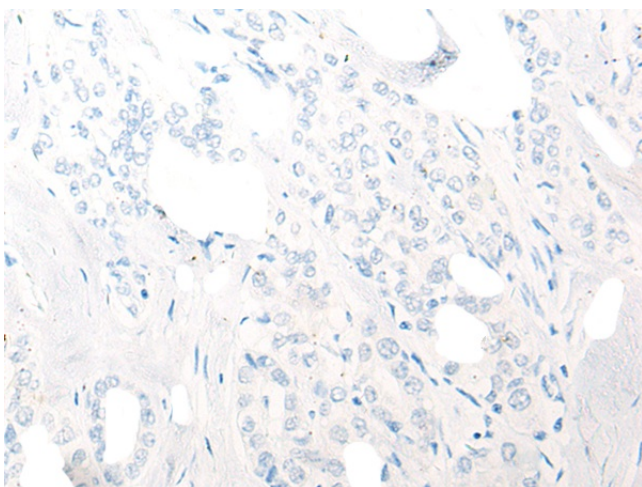
B5R.1; B5R1; humb5R2; NQO3A2

**Product images:**

Gel: 12%SDS-PAGE  
Lysate: 40 µg  
Lane 1-4: HEPG2  
HeLa  
K562 and PC-3 cell lysates  
Primary antibody: TA365706 (CYB5R1 Antibody)  
at dilution 1/300  
Secondary antibody: Goat anti rabbit IgG at  
1/8000 dilution  
Exposure time: 5 seconds



Immunohistochemistry of paraffin-embedded Human thyroid cancer tissue using TA365706 (CYB5R1 Antibody) at dilution 1/30 (Original magnification:  $\times 200$ )



Immunohistochemistry of paraffin-embedded Human thyroid cancer tissue using TA365706 (CYB5R1 Antibody) at dilution 1/30, treated with fusion protein. (Original magnification:  $\times 200$ )