

Product datasheet for **TA365703**

CREB3L2 Rabbit Polyclonal Antibody

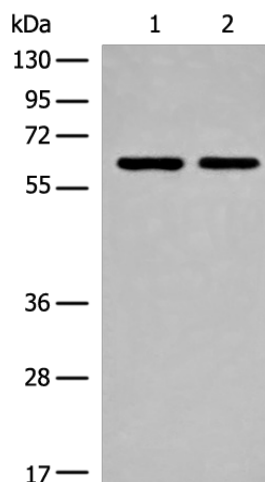
Product data:

Product Type:	Primary Antibodies
Applications:	IHC, WB
Recommended Dilution:	WB: 200-1000 WB positive control: HEPG2 and Hela cell lysates IHC: 25-100 Positive control: Human liver cancer Predicted cell location: Cytoplasm
Reactivity:	Human
Host:	Rabbit
Isotype:	IgG
Clonality:	Polyclonal
Immunogen:	Full length fusion protein
Formulation:	pH7.4 PBS, 0.05% NaN ₃ , 40% Glycerol
Concentration:	lot specific
Purification:	Antigen affinity purification
Conjugation:	Unconjugated
Storage:	Store at -20°C.
Stability:	1 year
Predicted Protein Size:	57 kDa
Gene Name:	cAMP responsive element binding protein 3-like 2
Database Link:	Entrez Gene 64764 Human Q70SY1
Background:	This gene encodes a member of the oasis bZIP transcription factor family. Members of this family can dimerize but form homodimers only. The encoded protein is a transcriptional activator. Translocations between this gene on chromosome 7 and the gene fused in sarcoma on chromosome 16 can be found in some tumors. Multiple transcript variants encoding different isoforms have been found for this gene.
Synonyms:	BBF2H7; MGC71006; MGC131709; TCAG_1951439



[View online »](#)

Product images:



Gel: 8%SDS-PAGE

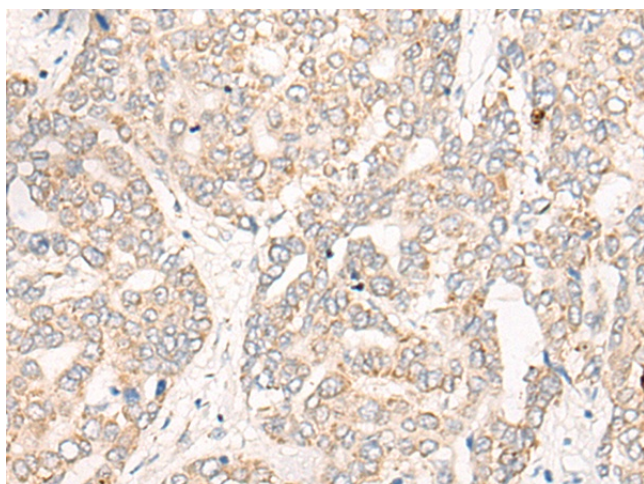
Lysate: 40 μ g

Lane 1-2: HEPG2 and HeLa cell lysates

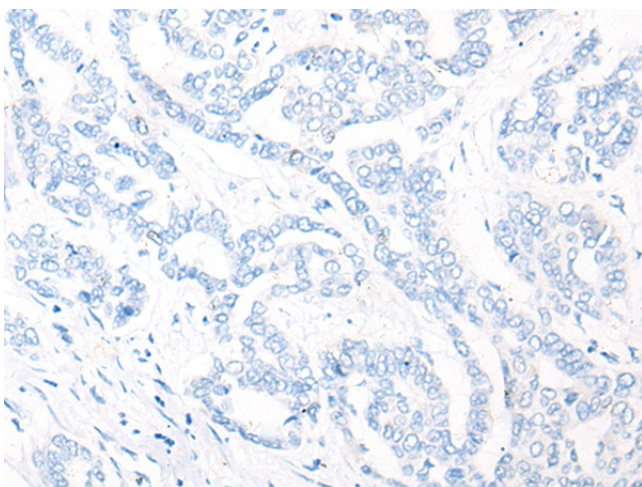
Primary antibody: TA365703 (CREB3L2 Antibody) at dilution 1/250

Secondary antibody: Goat anti rabbit IgG at 1/8000 dilution

Exposure time: 30 seconds



Immunohistochemistry of paraffin-embedded Human liver cancer tissue using TA365703 (CREB3L2 Antibody) at dilution 1/25 (Original magnification: \times 200)



Immunohistochemistry of paraffin-embedded Human liver cancer tissue using TA365703 (CREB3L2 Antibody) at dilution 1/25, treated with fusion protein. (Original magnification: ×200)