

## Product datasheet for **TA365701S**

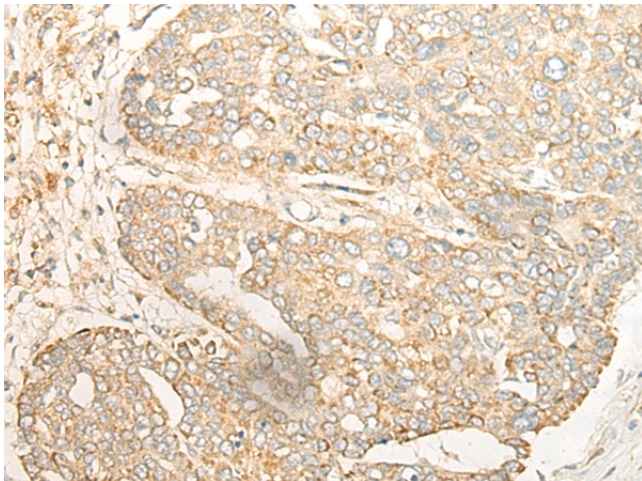
### CRB3 Rabbit Polyclonal Antibody

#### Product data:

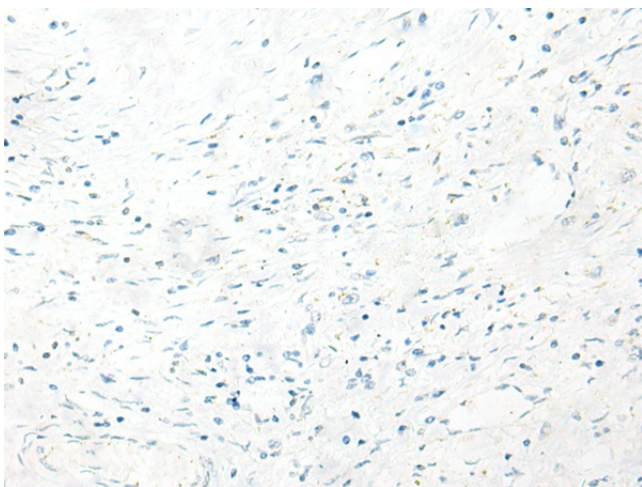
Product Type:	Primary Antibodies
Applications:	IHC
Recommended Dilution:	IHC: 25-100 Positive control: Human liver cancer Predicted cell location: Cell membrane and Cytoplasm
Reactivity:	Human
Host:	Rabbit
Isotype:	IgG
Clonality:	Polyclonal
Immunogen:	Fusion protein of human CRB3
Formulation:	pH7.4 PBS, 0.05% NaN <sub>3</sub> , 40% Glycerol
Purification:	Antigen affinity purification
Conjugation:	Unconjugated
Storage:	Store at -20°C.
Stability:	1 year
Gene Name:	crumbs 3, cell polarity complex component
Database Link:	<a href="#">Entrez Gene 92359 Human Q9BUF7</a>
Background:	This gene encodes a member of the Crumbs family of proteins. This gene is widely expressed in epithelial tissues where the encoded protein isoforms play various roles such as the control of cytokinesis and ciliogenesis or the formation of tight junctions. Alternative splicing results in multiple transcript variants encoding different isoforms.
Synonyms:	MGC17303



[View online »](#)

**Product images:**

Immunohistochemistry of paraffin-embedded Human liver cancer tissue using [TA365701] (CRB3 Antibody) at dilution 1/30 (Original magnification:  $\times 200$ )



Immunohistochemistry of paraffin-embedded Human liver cancer tissue using [TA365701] (CRB3 Antibody) at dilution 1/30, treated with fusion protein. (Original magnification:  $\times 200$ )