

Product datasheet for **TA365699**

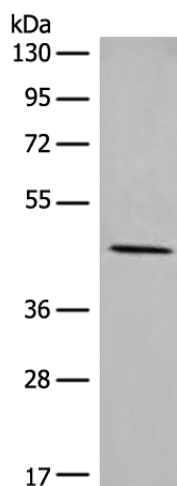
CPVL Rabbit Polyclonal Antibody

Product data:

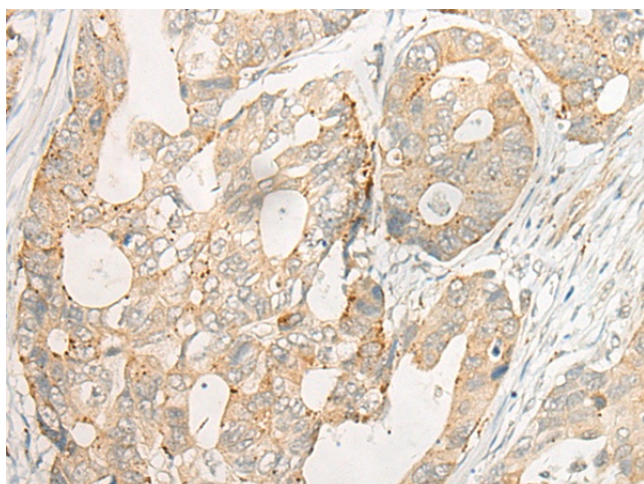
Product Type:	Primary Antibodies
Applications:	IHC, WB
Recommended Dilution:	WB: 200-1000 WB positive control: Human kidney tissue lysate IHC: 25-100 Positive control: Human gastric cancer Predicted cell location: Cytoplasm
Reactivity:	Human
Host:	Rabbit
Isotype:	IgG
Clonality:	Polyclonal
Immunogen:	Fusion protein of human CPVL
Formulation:	pH7.4 PBS, 0.05% NaN ₃ , 40% Glycerol
Concentration:	lot specific
Purification:	Antigen affinity purification
Conjugation:	Unconjugated
Storage:	Store at -20°C.
Stability:	1 year
Predicted Protein Size:	54 kDa
Gene Name:	carboxypeptidase, vitellogenic like
Database Link:	Entrez Gene 54504 Human Q9H3G5
Background:	The protein encoded by this gene is a carboxypeptidase and bears strong sequence similarity to serine carboxypeptidases. Carboxypeptidases are a large class of proteases that act to cleave a single amino acid from the carboxy termini of proteins or peptides. The exact function of this protein, however, has not been determined. At least two alternatively spliced transcripts which encode the same protein have been observed.
Synonyms:	HVLP; MGC10029; OTTHUMP00000202581; VLP



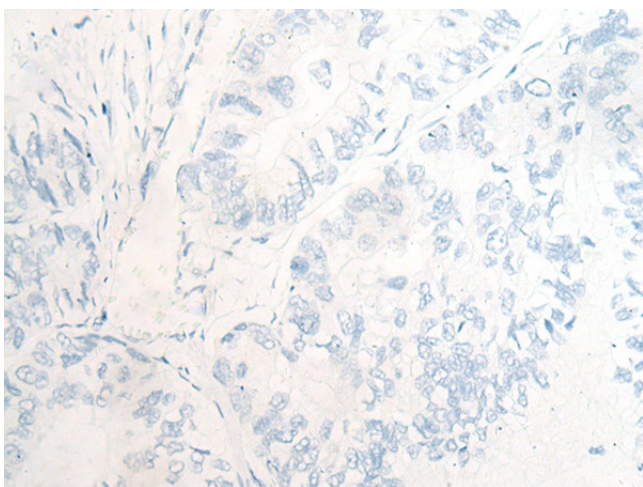
[View online »](#)

Product images:

Gel: 8%SDS-PAGE
Lysate: 40 µg
Lane: Human kidney tissue lysate
Primary antibody: TA365699 (CPVL Antibody) at dilution 1/450
Secondary antibody: Goat anti rabbit IgG at 1/8000 dilution
Exposure time: 2 minutes



Immunohistochemistry of paraffin-embedded Human gastric cancer tissue using TA365699 (CPVL Antibody) at dilution 1/30 (Original magnification: ×200)



Immunohistochemistry of paraffin-embedded Human gastric cancer tissue using TA365699 (CPVL Antibody) at dilution 1/30, treated with fusion protein. (Original magnification: ×200)