

Product datasheet for **TA365697**

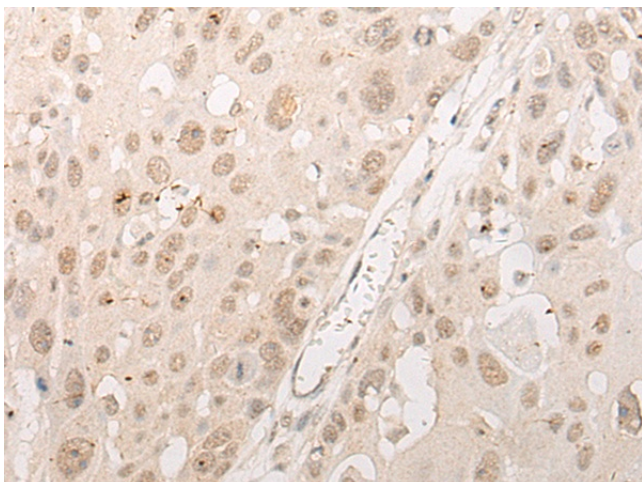
CPSF1 Rabbit Polyclonal Antibody

Product data:

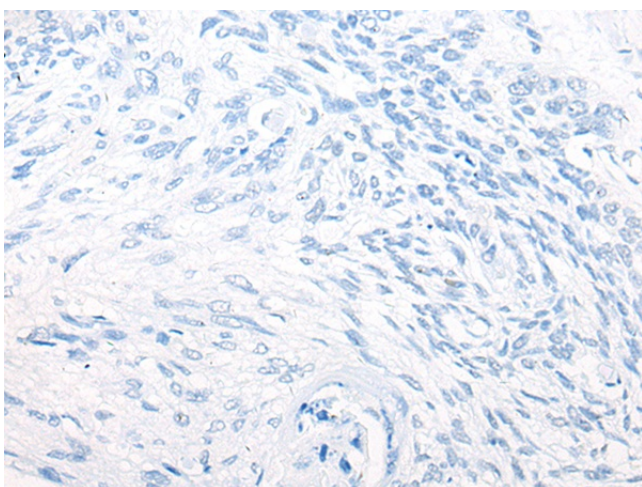
Product Type:	Primary Antibodies
Applications:	IHC
Recommended Dilution:	IHC: 20-100 Positive control: Human esophagus cancer Predicted cell location: Nucleus
Reactivity:	Human, Mouse
Host:	Rabbit
Isotype:	IgG
Clonality:	Polyclonal
Immunogen:	Fusion protein of human CPSF1
Formulation:	pH7.4 PBS, 0.05% NaN ₃ , 40% Glycerol
Concentration:	lot specific
Purification:	Antigen affinity purification
Conjugation:	Unconjugated
Storage:	Store at -20°C.
Stability:	1 year
Gene Name:	cleavage and polyadenylation specific factor 1
Database Link:	Entrez Gene 29894 Human Q10570
Background:	Cleavage and polyadenylation specificity factor (CPSF) is a multisubunit complex that plays a central role in 3-prime processing of pre-mRNAs. CPSF recognizes the AAUAAA signal in the pre-mRNA and interacts with other proteins to facilitate both RNA cleavage and poly(A) synthesis. CPSF1 is the largest subunit of the CPSF complex (Murthy and Manley, 1995 [PubMed 7590244]).
Synonyms:	CPSF160; HSU37012; P/c1.18



[View online »](#)

Product images:

Immunohistochemistry of paraffin-embedded Human esophagus cancer tissue using TA365697 (CPSF1 Antibody) at dilution 1/20 (Original magnification: $\times 200$)



Immunohistochemistry of paraffin-embedded Human esophagus cancer tissue using TA365697 (CPSF1 Antibody) at dilution 1/20, treated with fusion protein. (Original magnification: $\times 200$)