

## Product datasheet for **TA365691S**

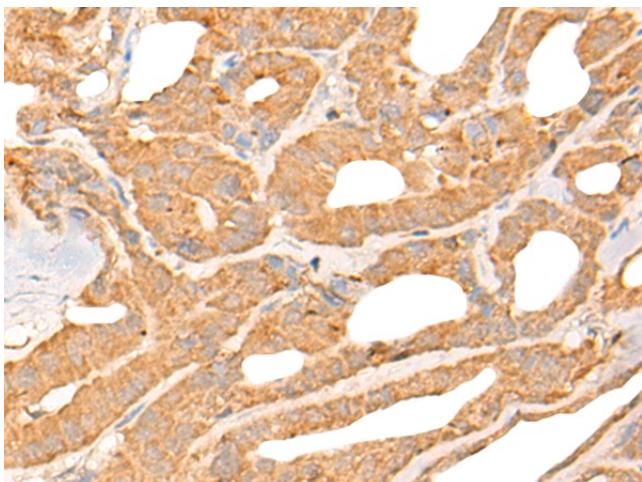
### CPEB4 Rabbit Polyclonal Antibody

#### Product data:

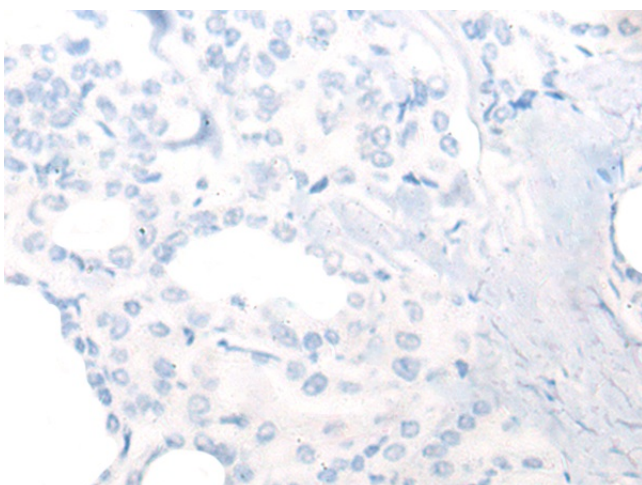
Product Type:	Primary Antibodies
Applications:	IHC
Recommended Dilution:	IHC: 25-100 Positive control: Human thyroid cancer Predicted cell location: Cytoplasm and Cell membrane
Reactivity:	Human, Mouse
Host:	Rabbit
Isotype:	IgG
Clonality:	Polyclonal
Immunogen:	Fusion protein of human CPEB4
Formulation:	pH7.4 PBS, 0.05% NaN <sub>3</sub> , 40% Glycerol
Purification:	Antigen affinity purification
Conjugation:	Unconjugated
Storage:	Store at -20°C.
Stability:	1 year
Gene Name:	cytoplasmic polyadenylation element binding protein 4
Database Link:	<a href="#">Entrez Gene 80315 Human Q17RY0</a>
Background:	Cytoplasmic polyadenylation element binding protein 4 (CPEB4) is a sequence-specific RNA-binding protein that participates in translational control. CPEB4 is a member of the CPEB family, which includes CPEB1, CPEB2, CPEB3, and CPEB4, all of which share structure and sequence identity in the C-terminal RNA-binding domain (RBD). CPEB4 has two domains: one that is structured for RNA binding and one that is unstructured and low complexity that has no known function.
Synonyms:	CPE-BP4; hCPEB-4; KIAA1673



[View online »](#)

**Product images:**

Immunohistochemistry of paraffin-embedded Human thyroid cancer tissue using [TA365691] (CPEB4 Antibody) at dilution 1/20 (Original magnification:  $\times 200$ )



Immunohistochemistry of paraffin-embedded Human thyroid cancer tissue using [TA365691] (CPEB4 Antibody) at dilution 1/20, treated with fusion protein. (Original magnification:  $\times 200$ )