

Product datasheet for **TA365685S**

CORO7 Rabbit Polyclonal Antibody

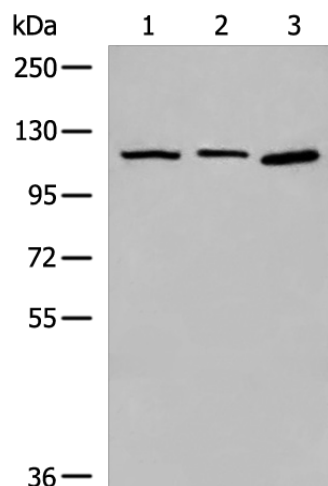
Product data:

Product Type:	Primary Antibodies
Applications:	IHC, WB
Recommended Dilution:	WB: 500-2000 WB positive control: Raji and 293T cell lysates IHC: 25-100 Positive control: Human thyroid cancer Predicted cell location: Cytoplasm
Reactivity:	Human, Mouse, Rat
Host:	Rabbit
Isotype:	IgG
Clonality:	Polyclonal
Immunogen:	Fusion protein of human CORO7
Formulation:	pH7.4 PBS, 0.05% NaN ₃ , 40% Glycerol
Purification:	Antigen affinity purification
Conjugation:	Unconjugated
Storage:	Store at -20°C.
Stability:	1 year
Predicted Protein Size:	101 kDa
Gene Name:	coronin 7
Database Link:	Entrez Gene 79585 Human P57737
Background:	Coronins, such as CORO7, constitute an evolutionarily conserved family of WD-repeat actin-binding proteins. CORO7 plays a role in Golgi complex morphology and function.
Synonyms:	0610011B16Rik; CRN7; FLJ22021; FLJ44188; POD1

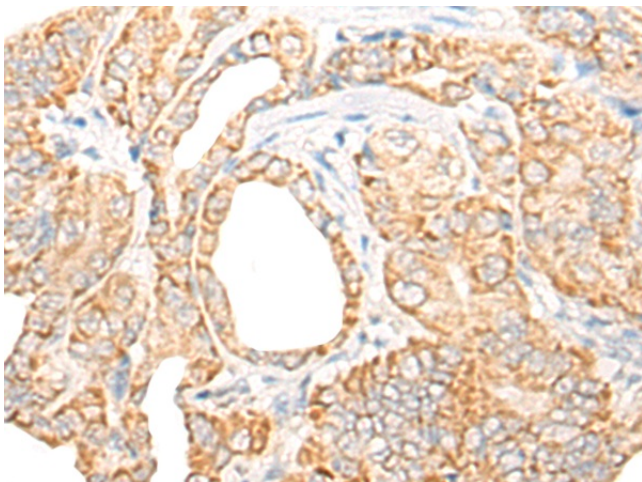


[View online »](#)

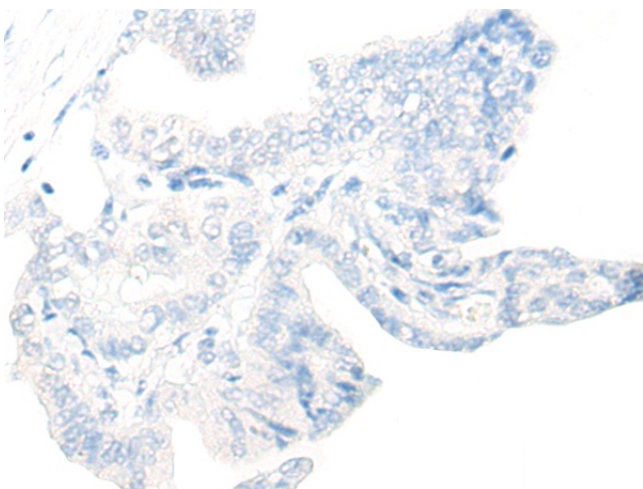
Product images:



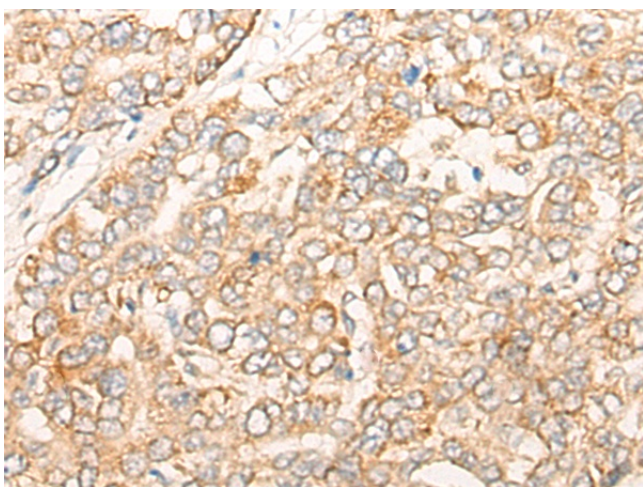
Gel: 6%SDS-PAGE
Lysate: 40 μ g
Lane 1-3: Raji
K562 and 293T cell lysates
Primary antibody: [TA365685] (CORO7 Antibody)
at dilution 1/800
Secondary antibody: Goat anti rabbit IgG at
1/8000 dilution
Exposure time: 5 seconds



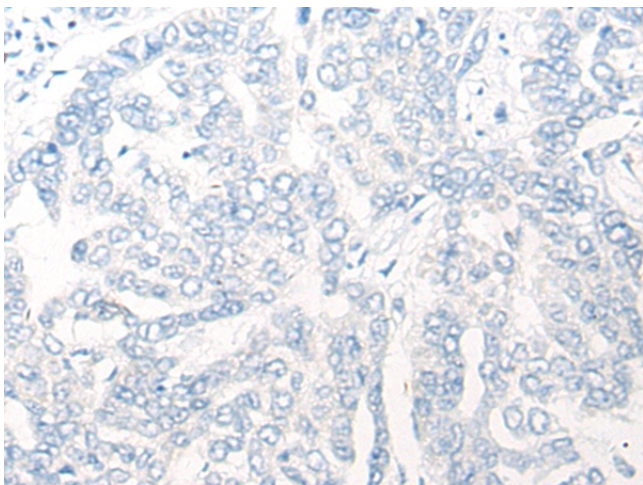
Immunohistochemistry of paraffin-embedded
Human thyroid cancer tissue using [TA365685]
(CORO7 Antibody) at dilution 1/35 (Original
magnification: $\times 200$)



Immunohistochemistry of paraffin-embedded Human thyroid cancer tissue using [TA365685] (CORO7 Antibody) at dilution 1/35, treated with fusion protein. (Original magnification: ×200)



Immunohistochemistry of paraffin-embedded Human liver cancer tissue using [TA365685] (CORO7 Antibody) at dilution 1/35 (Original magnification: ×200)



Immunohistochemistry of paraffin-embedded Human liver cancer tissue using [TA365685] (CORO7 Antibody) at dilution 1/35, treated with fusion protein. (Original magnification: ×200)