

## Product datasheet for **TA365685**

### **CORO7 Rabbit Polyclonal Antibody**

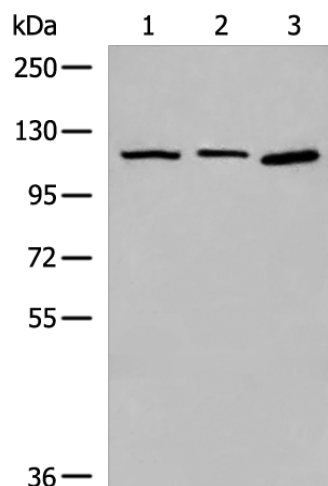
#### **Product data:**

<b>Product Type:</b>	Primary Antibodies
<b>Applications:</b>	IHC, WB
<b>Recommended Dilution:</b>	WB: 500-2000 WB positive control: Raji and 293T cell lysates IHC: 25-100 Positive control: Human thyroid cancer Predicted cell location: Cytoplasm
<b>Reactivity:</b>	Human, Mouse, Rat
<b>Host:</b>	Rabbit
<b>Isotype:</b>	IgG
<b>Clonality:</b>	Polyclonal
<b>Immunogen:</b>	Fusion protein of human CORO7
<b>Formulation:</b>	pH7.4 PBS, 0.05% NaN <sub>3</sub> , 40% Glycerol
<b>Concentration:</b>	lot specific
<b>Purification:</b>	Antigen affinity purification
<b>Conjugation:</b>	Unconjugated
<b>Storage:</b>	Store at -20°C.
<b>Stability:</b>	1 year
<b>Predicted Protein Size:</b>	101 kDa
<b>Gene Name:</b>	coronin 7
<b>Database Link:</b>	<a href="#">Entrez Gene 79585 Human P57737</a>
<b>Background:</b>	Coronins, such as CORO7, constitute an evolutionarily conserved family of WD-repeat actin-binding proteins. CORO7 plays a role in Golgi complex morphology and function.
<b>Synonyms:</b>	0610011B16Rik; CRN7; FLJ22021; FLJ44188; POD1

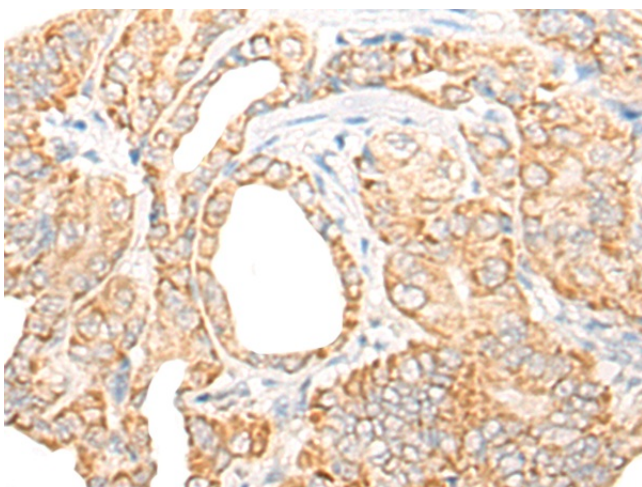


[View online »](#)

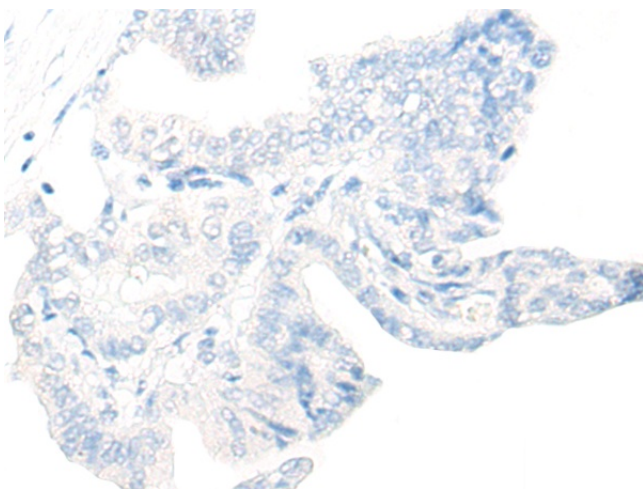
## Product images:



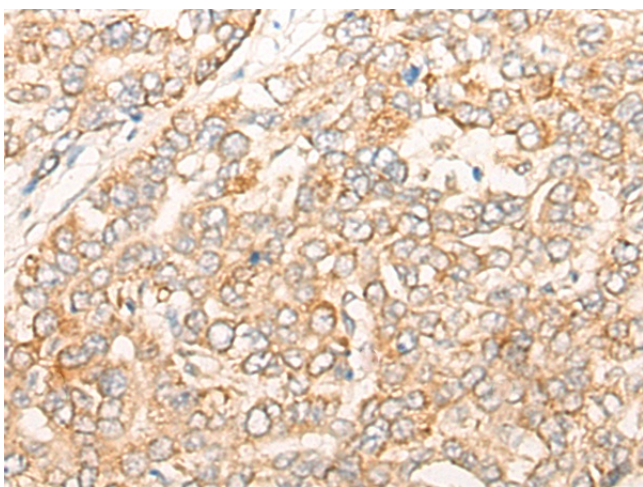
Gel: 6%SDS-PAGE  
Lysate: 40  $\mu$ g  
Lane 1-3: Raji  
K562 and 293T cell lysates  
Primary antibody: TA365685 (CORO7 Antibody) at  
dilution 1/800  
Secondary antibody: Goat anti rabbit IgG at  
1/8000 dilution  
Exposure time: 5 seconds



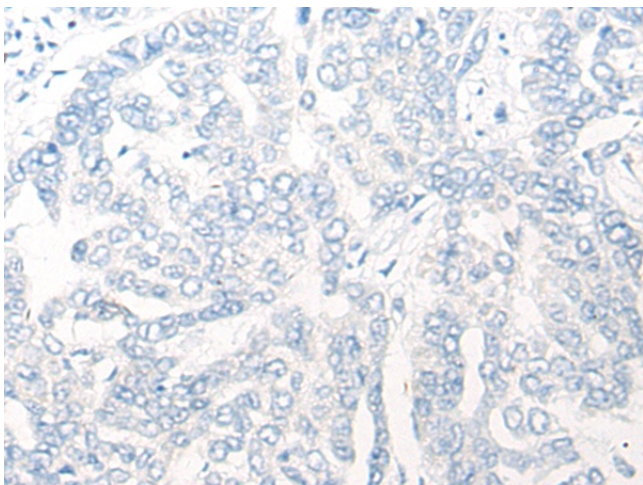
Immunohistochemistry of paraffin-embedded  
Human thyroid cancer tissue using TA365685  
(CORO7 Antibody) at dilution 1/35 (Original  
magnification:  $\times 200$ )



Immunohistochemistry of paraffin-embedded Human thyroid cancer tissue using TA365685 (CORO7 Antibody) at dilution 1/35, treated with fusion protein. (Original magnification: ×200)



Immunohistochemistry of paraffin-embedded Human liver cancer tissue using TA365685 (CORO7 Antibody) at dilution 1/35 (Original magnification: ×200)



Immunohistochemistry of paraffin-embedded Human liver cancer tissue using TA365685 (CORO7 Antibody) at dilution 1/35, treated with fusion protein. (Original magnification: ×200)