

Product datasheet for **TA365684S**

CORO2B Rabbit Polyclonal Antibody

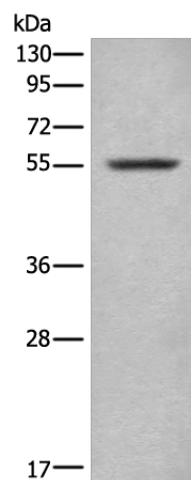
Product data:

Product Type:	Primary Antibodies
Applications:	IHC, WB
Recommended Dilution:	WB: 200-1000 WB positive control: Mouse lung tissue lysate IHC: 25-100 Positive control: Human thyroid cancer Predicted cell location: Cytoplasm
Reactivity:	Human, Mouse
Host:	Rabbit
Isotype:	IgG
Clonality:	Polyclonal
Immunogen:	Fusion protein of human CORO2B
Formulation:	pH7.4 PBS, 0.05% NaN ₃ , 40% Glycerol
Purification:	Antigen affinity purification
Conjugation:	Unconjugated
Storage:	Store at -20°C.
Stability:	1 year
Predicted Protein Size:	55 kDa
Gene Name:	coronin 2B
Database Link:	Entrez Gene 10391 Human Q9UQ03
Background:	May play a role in the reorganization of neuronal actin structure.
Synonyms:	Clipin-C; CLIPINC; KIAA0925

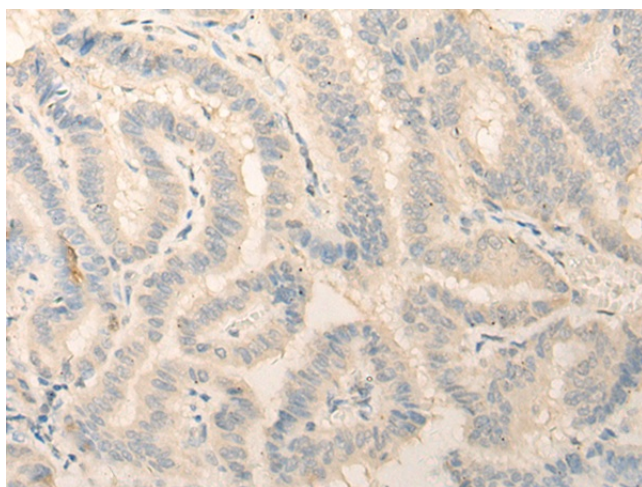


[View online »](#)

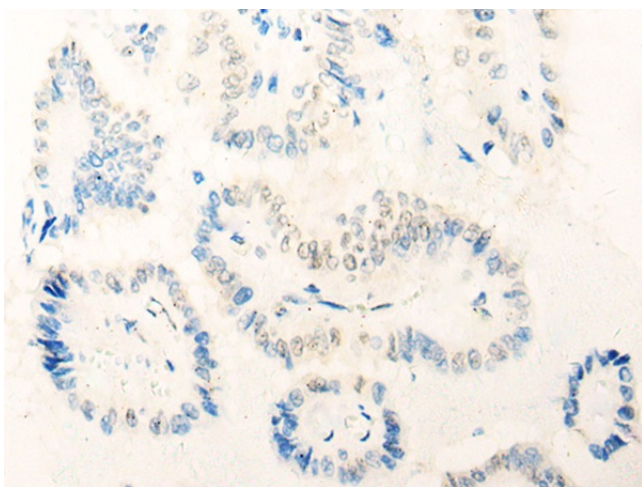
Product images:



Gel: 8%SDS-PAGE
Lysate: 40 µg
Lane: Mouse lung tissue lysate
Primary antibody: [TA365684] (CORO2B Antibody) at dilution 1/300
Secondary antibody: Goat anti rabbit IgG at 1/8000 dilution
Exposure time: 30 seconds



Immunohistochemistry of paraffin-embedded Human thyroid cancer tissue using [TA365684] (CORO2B Antibody) at dilution 1/20 (Original magnification: ×200)



Immunohistochemistry of paraffin-embedded Human thyroid cancer tissue using [TA365684] (CORO2B Antibody) at dilution 1/20, treated with fusion protein. (Original magnification: ×200)