

## Product datasheet for **TA365684**

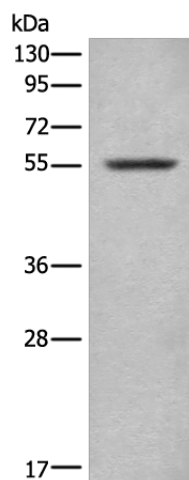
### **CORO2B Rabbit Polyclonal Antibody**

#### **Product data:**

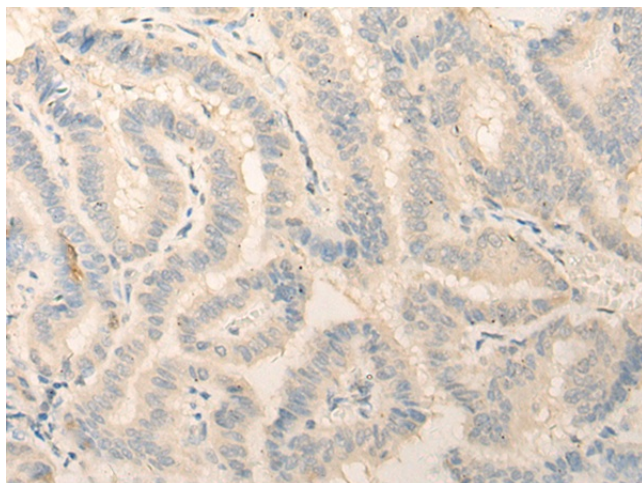
Product Type:	Primary Antibodies
Applications:	IHC, WB
Recommended Dilution:	WB: 200-1000 WB positive control: Mouse lung tissue lysate IHC: 25-100 Positive control: Human thyroid cancer Predicted cell location: Cytoplasm
Reactivity:	Human, Mouse
Host:	Rabbit
Isotype:	IgG
Clonality:	Polyclonal
Immunogen:	Fusion protein of human CORO2B
Formulation:	pH7.4 PBS, 0.05% NaN <sub>3</sub> , 40% Glycerol
Concentration:	lot specific
Purification:	Antigen affinity purification
Conjugation:	Unconjugated
Storage:	Store at -20°C.
Stability:	1 year
Predicted Protein Size:	55 kDa
Gene Name:	coronin 2B
Database Link:	<a href="#">Entrez Gene 10391 Human Q9UQ03</a>
Background:	May play a role in the reorganization of neuronal actin structure.
Synonyms:	Clipin-C; CLIPINC; KIAA0925



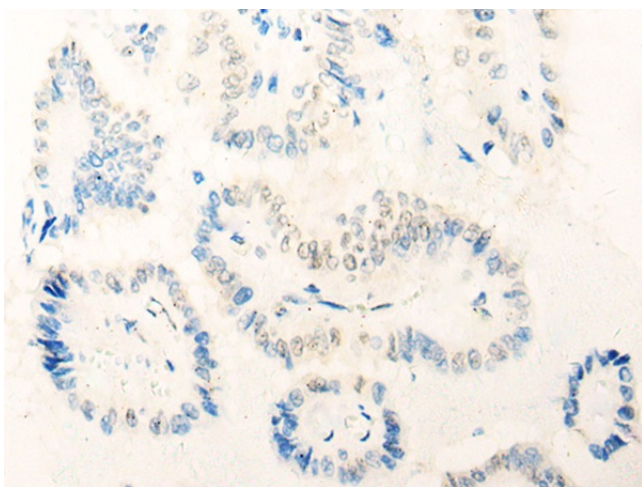
[View online »](#)

**Product images:**

Gel: 8%SDS-PAGE  
Lysate: 40  $\mu$ g  
Lane: Mouse lung tissue lysate  
Primary antibody: TA365684 (CORO2B Antibody)  
at dilution 1/300  
Secondary antibody: Goat anti rabbit IgG at  
1/8000 dilution  
Exposure time: 30 seconds



Immunohistochemistry of paraffin-embedded  
Human thyroid cancer tissue using TA365684  
(CORO2B Antibody) at dilution 1/20 (Original  
magnification:  $\times$ 200)



Immunohistochemistry of paraffin-embedded Human thyroid cancer tissue using TA365684 (CORO2B Antibody) at dilution 1/20, treated with fusion protein. (Original magnification: ×200)