

## Product datasheet for **TA365681**

### RCOR3 Rabbit Polyclonal Antibody

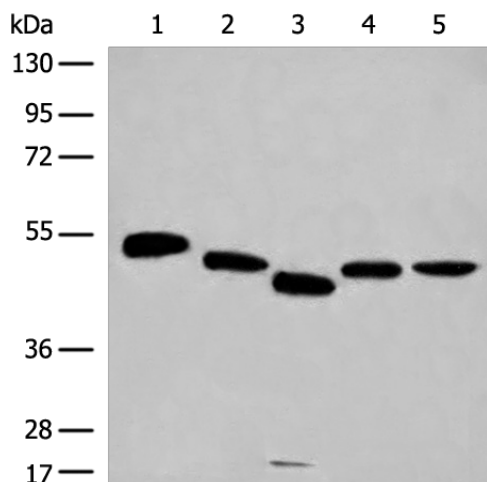
#### Product data:

Product Type:	Primary Antibodies
Applications:	IHC, WB
Recommended Dilution:	WB: 200-1000 WB positive control: 293T/Jurkat and Hela cell/Mouse brain tissue/NIH/3T3 cell lysates IHC: 20-100 Positive control: Human ovarian cancer Predicted cell location: Nucleus
Reactivity:	Human, Mouse
Host:	Rabbit
Isotype:	IgG
Clonality:	Polyclonal
Immunogen:	Fusion protein of human RCOR3
Formulation:	pH7.4 PBS, 0.05% NaN <sub>3</sub> , 40% Glycerol
Concentration:	lot specific
Purification:	Antigen affinity purification
Conjugation:	Unconjugated
Storage:	Store at -20°C.
Stability:	1 year
Predicted Protein Size:	56 kDa
Gene Name:	REST corepressor 3
Database Link:	<a href="#">Entrez Gene 55758 Human Q9P2K3</a>
Background:	May act as a component of a corepressor complex that represses transcription.
Synonyms:	FLJ10876; FLJ16298; KIAA1343; RP11-318L16.1

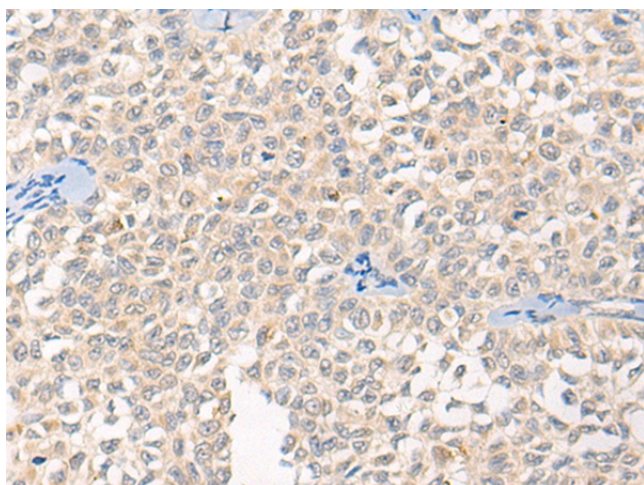


[View online »](#)

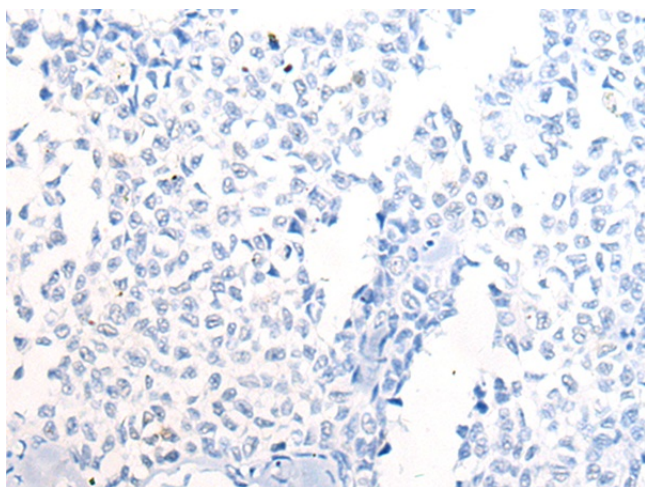
## Product images:



Gel: 8%SDS-PAGE  
Lysate: 40  $\mu$ g  
Lane 1-5: 293T  
Jurkat and HeLa cell  
Mouse brain tissue  
NIH/3T3 cell lysates  
Primary antibody: TA365681 (RCOR3 Antibody) at dilution 1/200  
Secondary antibody: Goat anti rabbit IgG at 1/8000 dilution  
Exposure time: 5 minutes



Immunohistochemistry of paraffin-embedded Human ovarian cancer tissue using TA365681 (RCOR3 Antibody) at dilution 1/20 (Original magnification:  $\times 200$ )



Immunohistochemistry of paraffin-embedded Human ovarian cancer tissue using TA365681 (RCOR3 Antibody) at dilution 1/20, treated with fusion protein. (Original magnification: ×200)