

## Product datasheet for **TA365662**

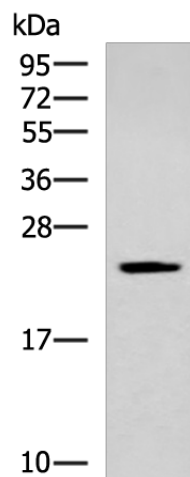
### **CMPK1 Rabbit Polyclonal Antibody**

#### **Product data:**

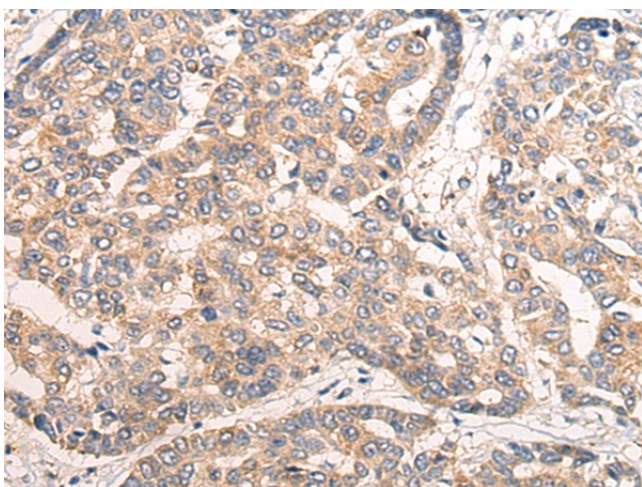
<b>Product Type:</b>	Primary Antibodies
<b>Applications:</b>	IHC, WB
<b>Recommended Dilution:</b>	WB: 500-2000 WB positive control: Human fetal liver tissue lysate IHC: 20-100 Positive control: Human liver cancer Predicted cell location: Cytoplasm or Nucleus
<b>Reactivity:</b>	Human, Mouse, Rat
<b>Host:</b>	Rabbit
<b>Isotype:</b>	IgG
<b>Clonality:</b>	Polyclonal
<b>Immunogen:</b>	Full length fusion protein
<b>Formulation:</b>	pH7.4 PBS, 0.05% NaN <sub>3</sub> , 40% Glycerol
<b>Concentration:</b>	lot specific
<b>Purification:</b>	Antigen affinity purification
<b>Conjugation:</b>	Unconjugated
<b>Storage:</b>	Store at -20°C.
<b>Stability:</b>	1 year
<b>Predicted Protein Size:</b>	22 kDa
<b>Gene Name:</b>	cytidine/uridine monophosphate kinase 1
<b>Database Link:</b>	<a href="#">Entrez Gene 51727 Human P30085</a>
<b>Background:</b>	This gene encodes one of the enzymes required for cellular nucleic acid biosynthesis. This enzyme catalyzes the transfer of a phosphate group from ATP to CMP, UMP, or dCMP, to form the corresponding diphosphate nucleotide. Alternate splicing results in both coding and non-coding transcript variants.
<b>Synonyms:</b>	CMK; CMPK; UCK; UMK; UMP-CMPK; UMP/CMPK; UMPK



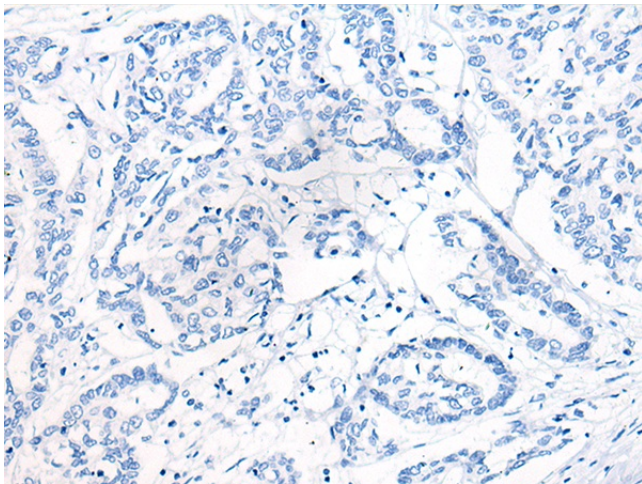
[View online »](#)

**Product images:**

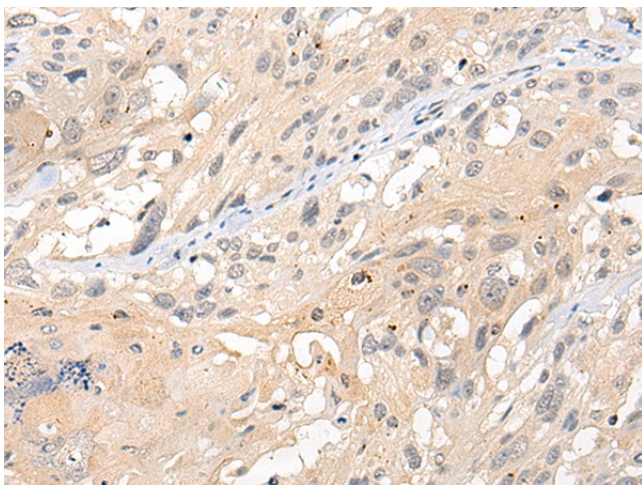
Gel: 12%SDS-PAGE  
Lysate: 40  $\mu$ g  
Lane: Human fetal liver tissue lysate  
Primary antibody: TA365662 (CMPK1 Antibody) at dilution 1/700  
Secondary antibody: Goat anti rabbit IgG at 1/5000 dilution  
Exposure time: 40 seconds



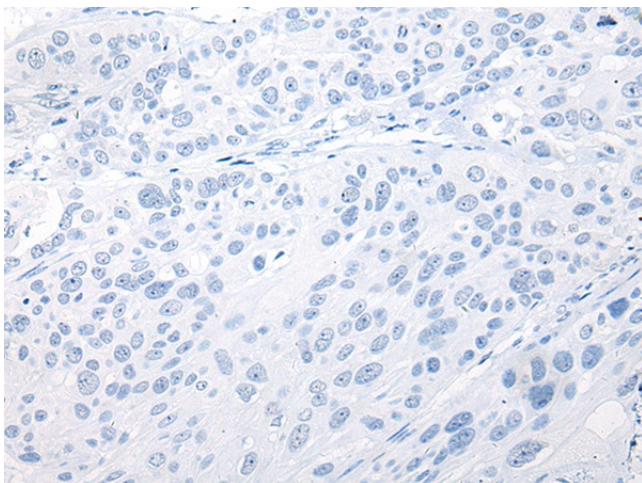
Immunohistochemistry of paraffin-embedded Human liver cancer tissue using TA365662 (CMPK1 Antibody) at dilution 1/20 (Original magnification:  $\times$ 200)



Immunohistochemistry of paraffin-embedded Human liver cancer tissue using TA365662 (CMPK1 Antibody) at dilution 1/20, treated with fusion protein. (Original magnification: ×200)



Immunohistochemistry of paraffin-embedded Human esophagus cancer tissue using TA365662 (CMPK1 Antibody) at dilution 1/20 (Original magnification: ×200)



Immunohistochemistry of paraffin-embedded Human esophagus cancer tissue using TA365662 (CMPK1 Antibody) at dilution 1/20, treated with fusion protein. (Original magnification: ×200)