

Product datasheet for **TA365661S**

CLPTM1 Rabbit Polyclonal Antibody

Product data:

Product Type:	Primary Antibodies
Applications:	IHC, WB
Recommended Dilution:	WB: 200-1000 WB positive control: Rat brain tissue□Mouse kidney tissue□A172 and Hela cell lysates IHC: 20-100 Positive control: Human gastric cancer Predicted cell location: Cell membrane
Reactivity:	Human, Mouse, Rat
Host:	Rabbit
Isotype:	IgG
Clonality:	Polyclonal
Immunogen:	Fusion protein of human CLPTM1
Formulation:	pH7.4 PBS, 0.05% NaN ₃ , 40% Glycerol
Purification:	Antigen affinity purification
Conjugation:	Unconjugated
Storage:	Store at -20°C.
Stability:	1 year
Predicted Protein Size:	76 kDa
Gene Name:	CLPTM1, transmembrane protein
Database Link:	Entrez Gene 1209 Human O96005



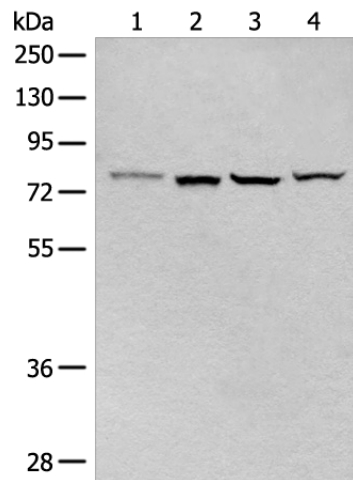
[View online »](#)

Background:

Clefts of the oral-facial region usually occur in early fetal development and can affect the lip, the soft palate (the soft tissue in the back of the mouth) and the hard palate (the roof of the mouth). Cleft lip (with or without cleft palate) is a genetically complex birth defect that occurs in approximately one in every 750-1,000 live births. This is one of the most common birth defects and is multifactorial, with both genetic and environmental causes. Cleft lip- and palate-associated transmembrane protein 1 (CLPTM1) belongs to a family of cleft lip and palate transmembrane proteins. This family also contains cisplatin resistance-related protein (CRR9), which is involved in CDDP-induced apoptosis. The CLPTM1 protein shows strong homology to two *Caenorhabditis elegans* genes.

Synonyms:

CLPTM1L; CRR9

Product images:

Gel: 8%SDS-PAGE

Lysate: 40 μ g

Lane 1-4: Rat brain tissue

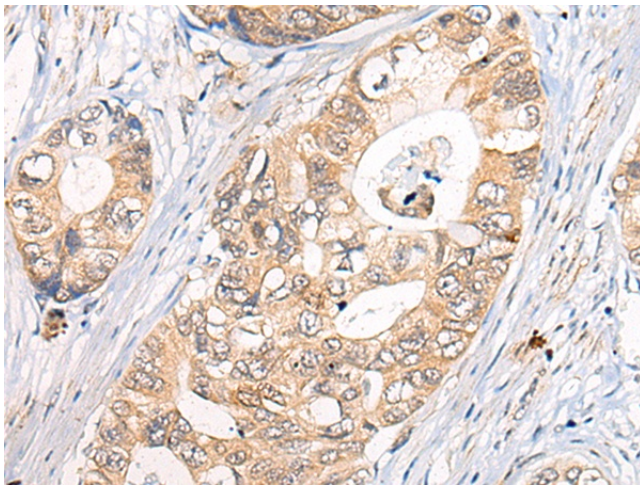
Mouse kidney tissue

A172 and Hela cell lysates

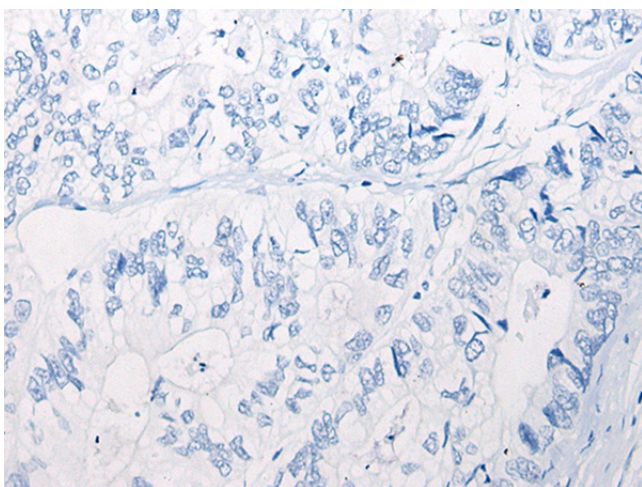
Primary antibody: [TA365661] (CLPTM1 Antibody) at dilution 1/200

Secondary antibody: Goat anti rabbit IgG at 1/8000 dilution

Exposure time: 30 seconds



Immunohistochemistry of paraffin-embedded Human gastric cancer tissue using [TA365661] (CLPTM1 Antibody) at dilution 1/20 (Original magnification: \times 200)



Immunohistochemistry of paraffin-embedded Human gastric cancer tissue using [TA365661] (CLPTM1 Antibody) at dilution 1/20, treated with fusion protein. (Original magnification: $\times 200$)