

## Product datasheet for **TA365661**

### CLPTM1 Rabbit Polyclonal Antibody

#### Product data:

|                         |   |
|-------------------------|---|
| Product Type:           | Primary Antibodies  |
| Applications:           | IHC, WB   |
| Recommended Dilution:   | WB: 200-1000<br>WB positive control: Rat brain tissue□Mouse kidney tissue□A172 and Hela cell lysates<br>IHC: 20-100<br>Positive control: Human gastric cancer<br>Predicted cell location: Cell membrane |
| Reactivity:             | Human, Mouse, Rat   |
| Host:                   | Rabbit  |
| Isotype:                | IgG   |
| Clonality:              | Polyclonal  |
| Immunogen:              | Fusion protein of human CLPTM1  |
| Formulation:            | pH7.4 PBS, 0.05% NaN <sub>3</sub> , 40% Glycerol  |
| Concentration:          | lot specific  |
| Purification:           | Antigen affinity purification   |
| Conjugation:            | Unconjugated  |
| Storage:                | Store at -20°C.   |
| Stability:              | 1 year  |
| Predicted Protein Size: | 76 kDa  |
| Gene Name:              | CLPTM1, transmembrane protein   |
| Database Link:          | <a href="#">Entrez Gene 1209 Human O96005</a>   |



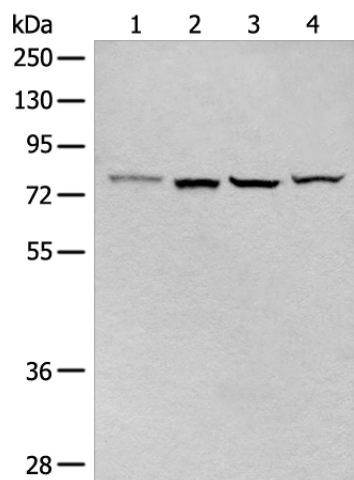
[View online »](#)

**Background:**

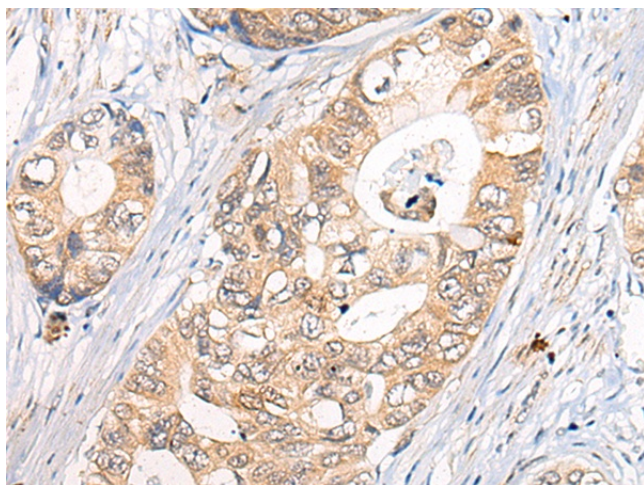
Clefts of the oral-facial region usually occur in early fetal development and can affect the lip, the soft palate (the soft tissue in the back of the mouth) and the hard palate (the roof of the mouth). Cleft lip (with or without cleft palate) is a genetically complex birth defect that occurs in approximately one in every 750-1,000 live births. This is one of the most common birth defects and is multifactorial, with both genetic and environmental causes. Cleft lip- and palate-associated transmembrane protein 1 (CLPTM1) belongs to a family of cleft lip and palate transmembrane proteins. This family also contains cisplatin resistance-related protein (CRR9), which is involved in CDDP-induced apoptosis. The CLPTM1 protein shows strong homology to two *Caenorhabditis elegans* genes.

**Synonyms:**

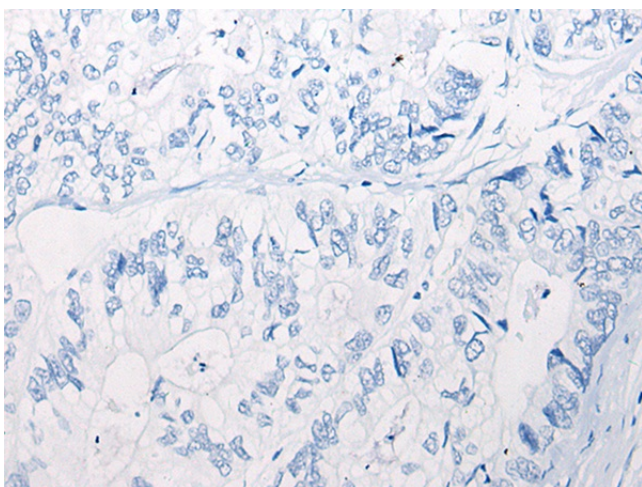
CLPTM1L; CRR9

**Product images:**


Gel: 8%SDS-PAGE  
 Lysate: 40  $\mu$ g  
 Lane 1-4: Rat brain tissue  
 Mouse kidney tissue  
 A172 and Hela cell lysates  
 Primary antibody: TA365661 (CLPTM1 Antibody)  
 at dilution 1/200  
 Secondary antibody: Goat anti rabbit IgG at  
 1/8000 dilution  
 Exposure time: 30 seconds



Immunohistochemistry of paraffin-embedded Human gastric cancer tissue using TA365661 (CLPTM1 Antibody) at dilution 1/20 (Original magnification:  $\times$ 200)



Immunohistochemistry of paraffin-embedded Human gastric cancer tissue using TA365661 (CLPTM1 Antibody) at dilution 1/20, treated with fusion protein. (Original magnification:  $\times 200$ )