

## Product datasheet for **TA365657**

### CLC7 (CLCN7) Rabbit Polyclonal Antibody

#### Product data:

Product Type:	Primary Antibodies
Applications:	IHC
Recommended Dilution:	IHC: 50-100 Positive control: Human breast cancer Predicted cell location: Cytoplasm
Reactivity:	Human, Mouse, Rat
Host:	Rabbit
Isotype:	IgG
Clonality:	Polyclonal
Immunogen:	Fusion protein of human CLCN7
Formulation:	pH7.4 PBS, 0.05% NaN <sub>3</sub> , 40% Glycerol
Concentration:	lot specific
Purification:	Antigen affinity purification
Conjugation:	Unconjugated
Storage:	Store at -20°C.
Stability:	1 year
Gene Name:	chloride voltage-gated channel 7
Database Link:	<a href="#">Entrez Gene 1186 Human P51798</a>

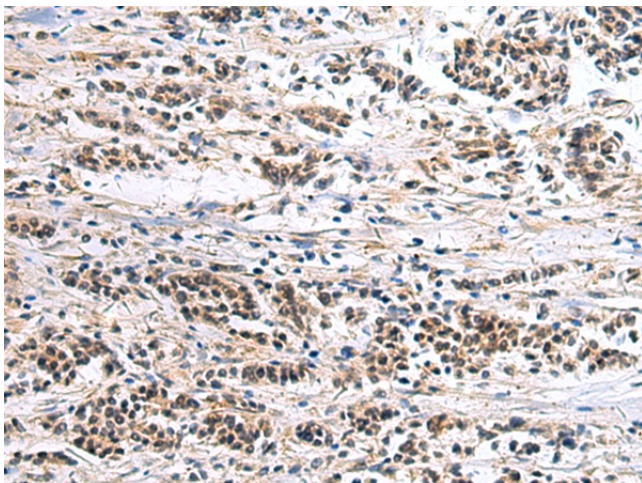
**Background:** The product of this gene belongs to the CLC chloride channel family of proteins. Chloride channels play important roles in the plasma membrane and in intracellular organelles. This gene encodes chloride channel 7. Defects in this gene are the cause of osteopetrosis autosomal recessive type 4 (OPTB4), also called infantile malignant osteopetrosis type 2 as well as the cause of autosomal dominant osteopetrosis type 2 (OPTA2), also called autosomal dominant Albers-Schonberg disease or marble disease autosomal dominant. Osteopetrosis is a rare genetic disease characterized by abnormally dense bone, due to defective resorption of immature bone. OPTA2 is the most common form of osteopetrosis, occurring in adolescence or adulthood.



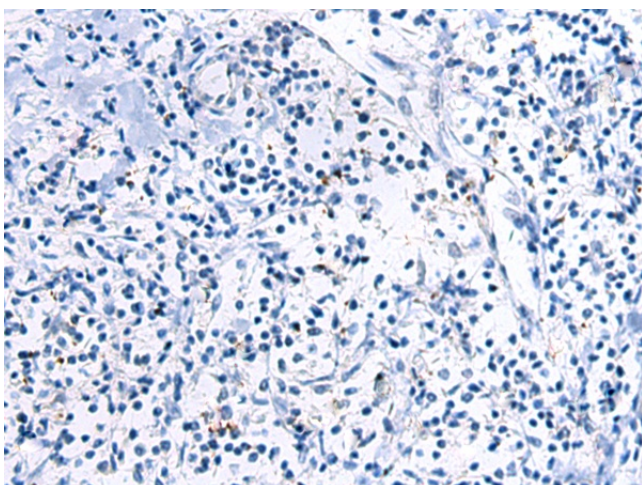
[View online »](#)

Synonyms: CLC-7; CLC7; FLJ26686; FLJ39644; FLJ46423; OPTA2; OPTB4

### Product images:



Immunohistochemistry of paraffin-embedded Human breast cancer tissue using TA365657 (CLCN7 Antibody) at dilution 1/105 (Original magnification: ×200)



Immunohistochemistry of paraffin-embedded Human breast cancer tissue using TA365657 (CLCN7 Antibody) at dilution 1/105, treated with fusion protein. (Original magnification: ×200)