

Product datasheet for **TA365653**

CKAP1 (TBCB) Rabbit Polyclonal Antibody

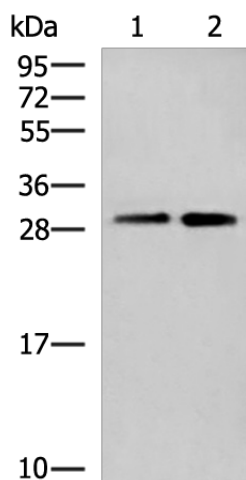
Product data:

Product Type:	Primary Antibodies
Applications:	WB
Recommended Dilution:	WB: 500-2000 WB positive control: A549 cell and Human cerebrum tissue lysates
Reactivity:	Human, Mouse
Host:	Rabbit
Isotype:	IgG
Clonality:	Polyclonal
Immunogen:	Fusion protein of human TBCB
Formulation:	pH7.4 PBS, 0.05% NaN ₃ , 40% Glycerol
Concentration:	lot specific
Purification:	Antigen affinity purification
Conjugation:	Unconjugated
Storage:	Store at -20°C.
Stability:	1 year
Predicted Protein Size:	27 kDa
Gene Name:	tubulin folding cofactor B
Database Link:	Entrez Gene 1155 Human Q99426
Background:	Binds to alpha-tubulin folding intermediates after their interaction with cytosolic chaperonin in the pathway leading from newly synthesized tubulin to properly folded heterodimer. Involved in regulation of tubulin heterodimer dissociation. May function as a negative regulator of axonal growth.
Synonyms:	CG22; CKAP1; CKAPI



[View online »](#)

Product images:



Gel: 12%SDS-PAGE

Lysate: 40 μ g

Lane: A549 cell and Human cerebrum tissue lysates

Primary antibody: TA365653 (TBCB Antibody) at dilution 1/500

Secondary antibody: Goat anti rabbit IgG at 1/5000 dilution

Exposure time: 2 minutes