

Product datasheet for **TA365644S**

Chordin (CHRD) Rabbit Polyclonal Antibody

Product data:

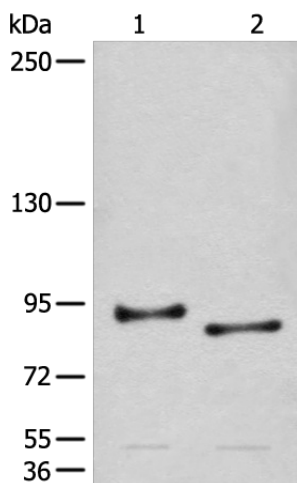
Product Type:	Primary Antibodies
Applications:	IHC, WB
Recommended Dilution:	WB: 200-1000 WB positive control: Human cerebrum tissue and Mouse brain tissue lysates IHC: 25-100 Positive control: Human thyroid cancer Predicted cell location: Cytoplasm and Cell membrane
Reactivity:	Human, Mouse, Rat
Host:	Rabbit
Isotype:	IgG
Clonality:	Polyclonal
Immunogen:	Fusion protein of human CHRD
Formulation:	pH7.4 PBS, 0.05% NaN ₃ , 40% Glycerol
Purification:	Antigen affinity purification
Conjugation:	Unconjugated
Storage:	Store at -20°C.
Stability:	1 year
Predicted Protein Size:	102 kDa
Gene Name:	chordin
Database Link:	Entrez Gene 8646 Human Q9H2X0
Background:	This gene encodes a secreted protein that dorsalizes early vertebrate embryonic tissues by binding to ventralizing TGF-beta-like bone morphogenetic proteins and sequestering them in latent complexes. The encoded protein may also have roles in organogenesis and during adulthood. It has been suggested that this gene could be a candidate gene for Cornelia de Lange syndrome. Reduced expression of this gene results in enhanced bone regeneration. Alternative splicing results in multiple transcript variants. Other alternative splice variants have been described but their full length sequence has not been determined.



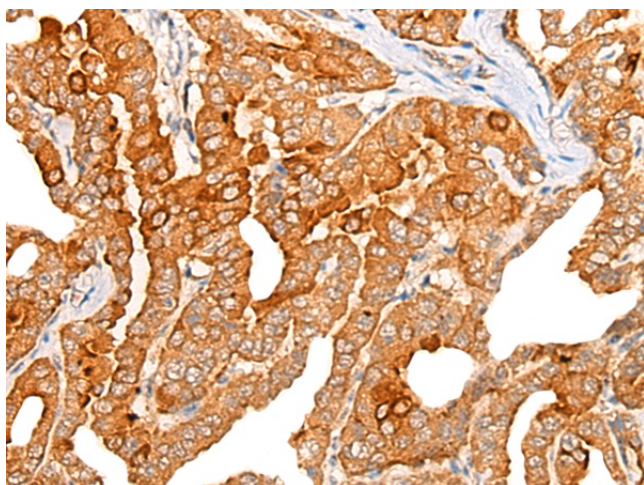
[View online »](#)

Synonyms: chordin; MGC133038

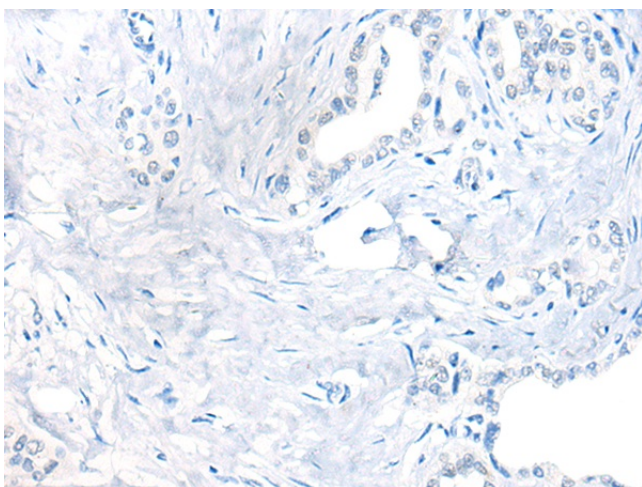
Product images:



Gel: 6%SDS-PAGE
 Lysate: 40 µg
 Lane 1-2: Human cerebrum tissue and Mouse brain tissue lysates
 Primary antibody: [TA365644] (CHRD Antibody) at dilution 1/250
 Secondary antibody: Goat anti rabbit IgG at 1/8000 dilution
 Exposure time: 1 minute



Immunohistochemistry of paraffin-embedded Human thyroid cancer tissue using [TA365644] (CHRD Antibody) at dilution 1/25 (Original magnification: ×200)



Immunohistochemistry of paraffin-embedded Human thyroid cancer tissue using [TA365644] (CHRD Antibody) at dilution 1/25, treated with fusion protein. (Original magnification: ×200)