

Product datasheet for **TA365643**

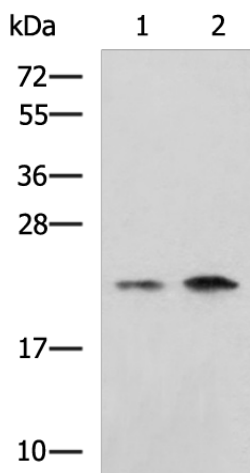
CHMP6 Rabbit Polyclonal Antibody

Product data:

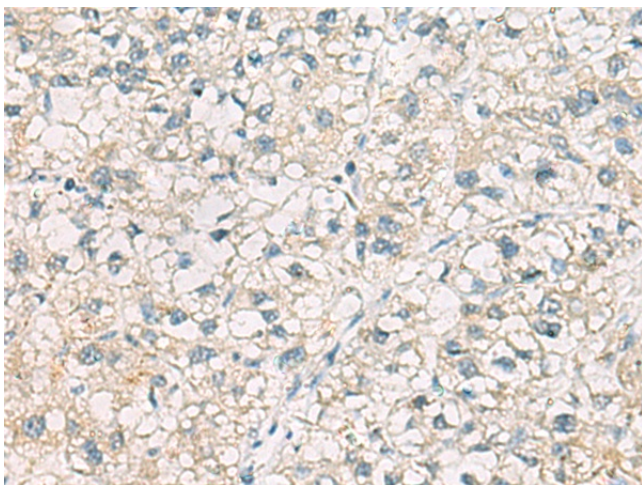
Product Type:	Primary Antibodies
Applications:	IHC, WB
Recommended Dilution:	WB: 500-2000 WB positive control: Jurkat, Raji cell lysates IHC: 50-100 Positive control: Human liver cancer Predicted cell location: Cytoplasm
Reactivity:	Human, Mouse
Host:	Rabbit
Isotype:	IgG
Clonality:	Polyclonal
Immunogen:	Fusion protein of human CHMP6
Formulation:	pH7.4 PBS, 0.05% NaN ₃ , 40% Glycerol
Concentration:	lot specific
Purification:	Antigen affinity purification
Conjugation:	Unconjugated
Storage:	Store at -20°C.
Stability:	1 year
Predicted Protein Size:	23 kDa
Gene Name:	charged multivesicular body protein 6
Database Link:	Entrez Gene 79643 Human Q96FZ7
Background:	This gene encodes a member of the chromatin-modifying protein/charged multivesicular body protein family. Proteins in this family are part of the ESCRT-III (endosomal sorting complex required for transport III) which degrades surface receptors, and in biosynthesis of endosomes.
Synonyms:	FLJ11749; hVps20; VPS20



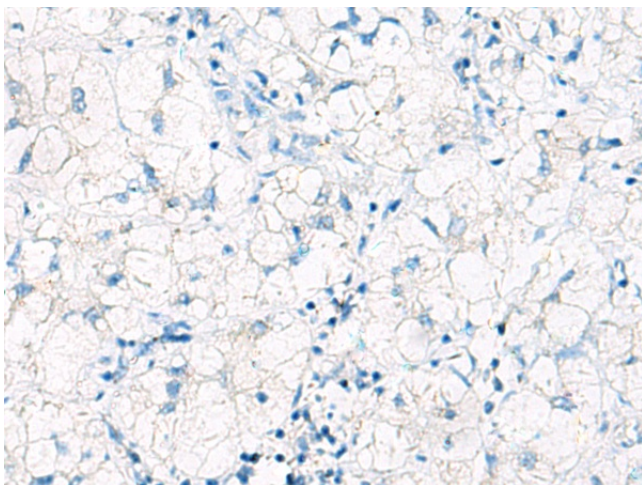
[View online »](#)

Product images:

Gel: 12%SDS-PAGE
Lysate: 40 μ g
Lane 1-2: Jurkat
Raji cell lysates
Primary antibody: TA365643 (CHMP6 Antibody) at dilution 1/1000
Secondary antibody: Goat anti rabbit IgG at 1/5000 dilution
Exposure time: 1 minute



Immunohistochemistry of paraffin-embedded Human liver cancer tissue using TA365643 (CHMP6 Antibody) at dilution 1/65 (Original magnification: \times 200)



Immunohistochemistry of paraffin-embedded Human liver cancer tissue using TA365643 (CHMP6 Antibody) at dilution 1/65, treated with fusion protein. (Original magnification: ×200)