

Product datasheet for **TA365640S**

CHIT1 Rabbit Polyclonal Antibody

Product data:

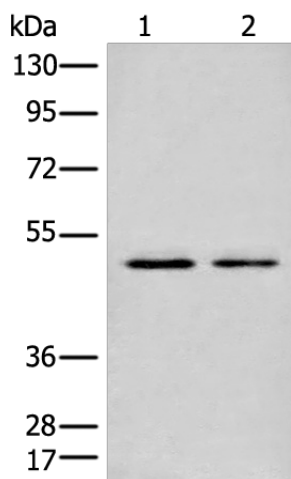
Product Type:	Primary Antibodies
Applications:	IHC, WB
Recommended Dilution:	WB: 200-1000 WB positive control: Human lung tissue and Human spleen tissue lysates IHC: 25-100 Positive control: Human thyroid cancer Predicted cell location: Cytoplasm and Cell membrane
Reactivity:	Human
Host:	Rabbit
Isotype:	IgG
Clonality:	Polyclonal
Immunogen:	Fusion protein of human CHIT1
Formulation:	pH7.4 PBS, 0.05% NaN ₃ , 40% Glycerol
Purification:	Antigen affinity purification
Conjugation:	Unconjugated
Storage:	Store at -20°C.
Stability:	1 year
Predicted Protein Size:	52 kDa
Gene Name:	chitinase 1
Database Link:	Entrez Gene 1118 Human Q13231
Background:	Chitotriosidase is secreted by activated human macrophages and is markedly elevated in plasma of Gaucher disease patients. The expression of chitotriosidase occurs only at a late stage of differentiation of monocytes to activated macrophages in culture. Human macrophages can synthesize a functional chitotriosidase, a highly conserved enzyme with a strongly regulated expression. This enzyme may play a role in the degradation of chitin-containing pathogens. Several alternatively spliced transcript variants have been described for this gene.



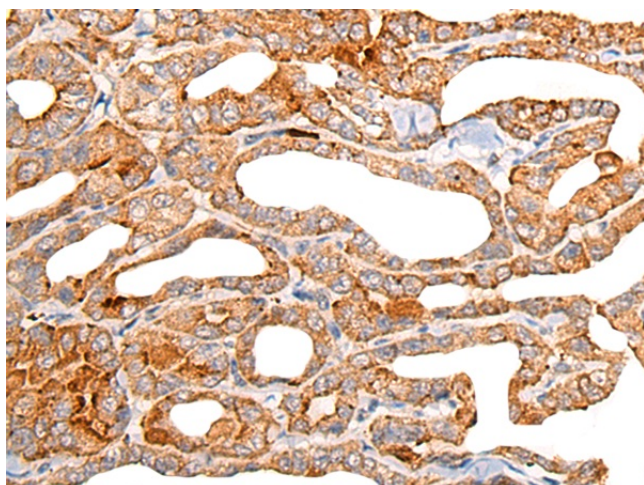
[View online »](#)

Synonyms: CHI3; CHIT; Chitinase-1; chitotriosidase; FLJ00314; MGC125322

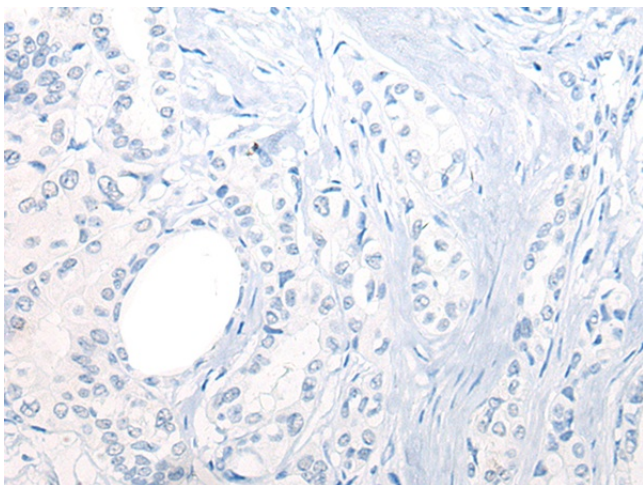
Product images:



Gel: 8%SDS-PAGE
Lysate: 40 μ g
Lane 1-2: Human lung tissue and Human spleen tissue lysates
Primary antibody: [TA365640] (CHIT1 Antibody) at dilution 1/350
Secondary antibody: Goat anti rabbit IgG at 1/8000 dilution
Exposure time: 1 minute



Immunohistochemistry of paraffin-embedded Human thyroid cancer tissue using [TA365640] (CHIT1 Antibody) at dilution 1/30 (Original magnification: $\times 200$)



Immunohistochemistry of paraffin-embedded Human thyroid cancer tissue using [TA365640] (CHIT1 Antibody) at dilution 1/30, treated with fusion protein. (Original magnification: $\times 200$)