

Product datasheet for **TA365637S**

CHERP Rabbit Polyclonal Antibody

Product data:

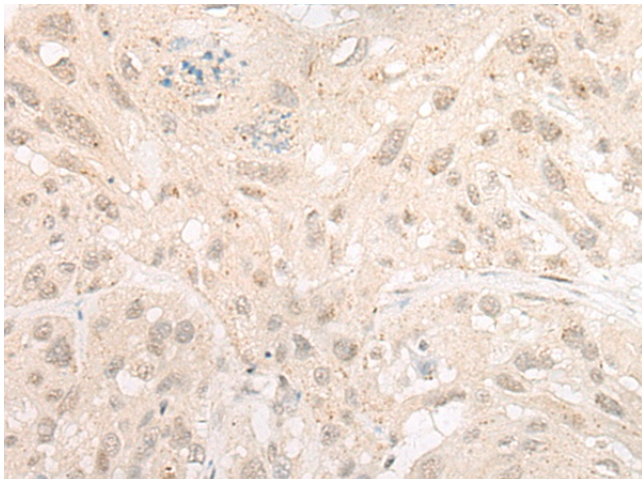
| | |
|-----------------------|--|
| Product Type: | Primary Antibodies |
| Applications: | IHC |
| Recommended Dilution: | IHC: 20-100 Positive control: Human esophagus cancer Predicted cell location: Nucleus or Cytoplasm |
| Reactivity: | Human |
| Host: | Rabbit |
| Isotype: | IgG |
| Clonality: | Polyclonal |
| Immunogen: | Fusion protein of human CHERP |
| Formulation: | pH7.4 PBS, 0.05% NaN ₃ , 40% Glycerol |
| Purification: | Antigen affinity purification |
| Conjugation: | Unconjugated |
| Storage: | Store at -20°C. |
| Stability: | 1 year |
| Gene Name: | calcium homeostasis endoplasmic reticulum protein |
| Database Link: | Entrez Gene 10523 Human Q8IWX8 |

Background: The regulation of the intracellular concentration of calcium is important for proper maintenance of voltage-gated ion channels which control muscle and nerve function. Calcium homeostasis is regulated by a variety of proteins. CHERP (calcium homeostasis endoplasmic reticulum protein), also known as SRA1, DAN16 or SCAF6, is a 916 amino acid protein that localizes to the cytoplasm and the endoplasmic reticulum (ER). Expressed in pancreas, brain, lung, placenta, liver, kidney, heart and skeletal muscle, CHERP is involved in maintaining calcium homeostasis and plays a role in cell growth and proliferation. CHERP contains one G-patch domain, one RPR domain and one SURP motif and is expressed as two isoforms due to alternative splicing events.

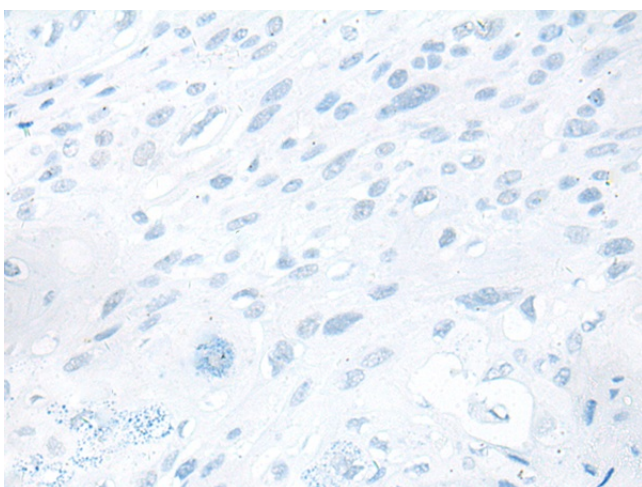
Synonyms: DAN16; DAN26; ERPROT213-21; SCAF6; SRA1



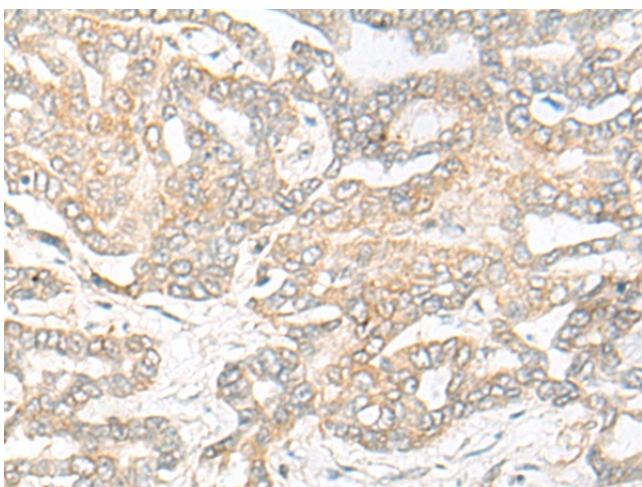
[View online »](#)

Product images:

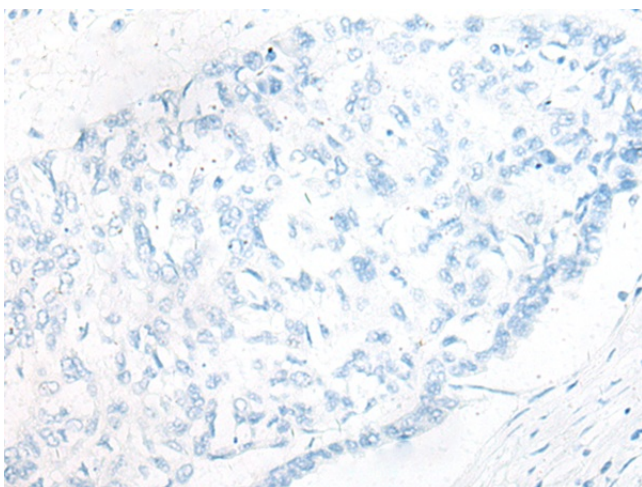
Immunohistochemistry of paraffin-embedded Human esophagus cancer tissue using [TA365637] (CHERP Antibody) at dilution 1/20 (Original magnification: $\times 200$)



Immunohistochemistry of paraffin-embedded Human esophagus cancer tissue using [TA365637] (CHERP Antibody) at dilution 1/20, treated with fusion protein. (Original magnification: $\times 200$)



Immunohistochemistry of paraffin-embedded Human liver cancer tissue using [TA365637] (CHERP Antibody) at dilution 1/20 (Original magnification: ×200)



Immunohistochemistry of paraffin-embedded Human liver cancer tissue using [TA365637] (CHERP Antibody) at dilution 1/20, treated with fusion protein. (Original magnification: ×200)