

Product datasheet for **TA365632S**

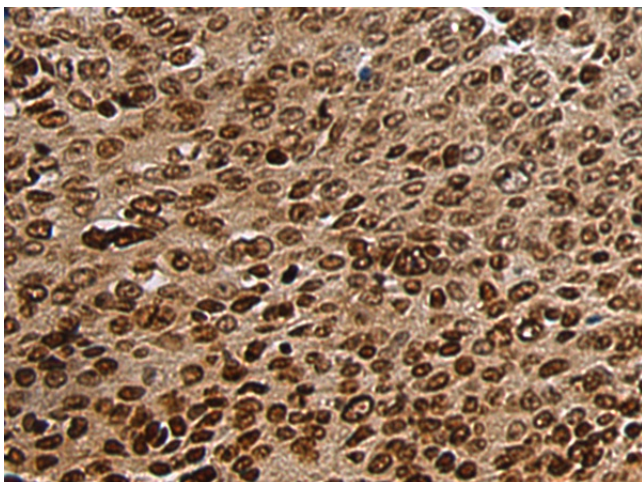
CGBP (CXXC1) Rabbit Polyclonal Antibody

Product data:

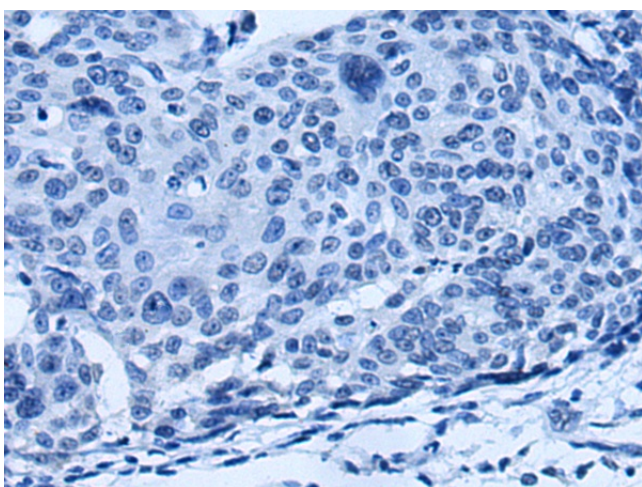
| | |
|------------------------------|---|
| Product Type: | Primary Antibodies |
| Applications: | IHC |
| Recommended Dilution: | IHC: 150-300 Positive control: Human cervical cancer Predicted cell location: Nucleus and Cytoplasm |
| Reactivity: | Human, Mouse |
| Host: | Rabbit |
| Isotype: | IgG |
| Clonality: | Polyclonal |
| Immunogen: | Fusion protein of human CXXC1 |
| Formulation: | pH7.4 PBS, 0.05% NaN ₃ , 40% Glycerol |
| Purification: | Antigen affinity purification |
| Conjugation: | Unconjugated |
| Storage: | Store at -20°C. |
| Stability: | 1 year |
| Gene Name: | CXXC finger protein 1 |
| Database Link: | Entrez Gene 30827 Human Q9POU4 |
| Background: | This gene encodes a protein that functions as a transcriptional activator that binds specifically to non-methylated CpG motifs through its CXXC domain. The protein is a component of the SETD1 complex, regulates gene expression and is essential for vertebrate development. |
| Synonyms: | 2410002I16Rik; 5830420C16Rik; CFP1; CGBP; hCGBP; HsT2645; PCCX1; PHF18; SPP1; ZCGPC1 |



[View online »](#)

Product images:

Immunohistochemistry of paraffin-embedded Human cervical cancer tissue using [TA365632] (CXXC1 Antibody) at dilution 1/160 (Original magnification: $\times 200$)



Immunohistochemistry of paraffin-embedded Human cervical cancer tissue using [TA365632] (CXXC1 Antibody) at dilution 1/160, treated with fusion protein. (Original magnification: $\times 200$)