

Product datasheet for **TA365631**

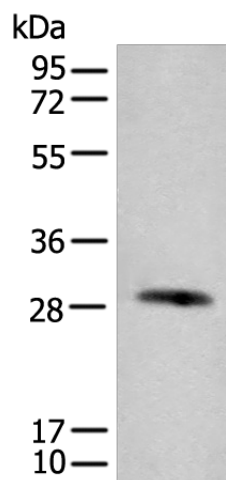
CFHL2 (CFHR2) Rabbit Polyclonal Antibody

Product data:

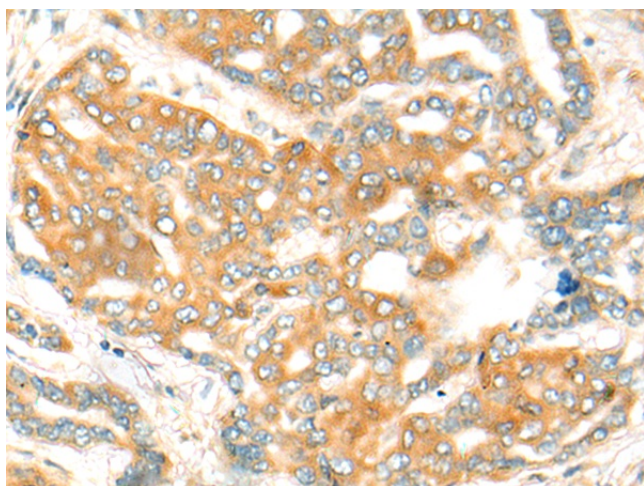
| | |
|-------------------------|---|
| Product Type: | Primary Antibodies |
| Applications: | IHC, WB |
| Recommended Dilution: | WB: 500-2000 WB positive control: Human urinary bladder tissue lysate IHC: 30-150 Positive control: Human liver cancer Predicted cell location: Cytoplasm or Nucleus |
| Reactivity: | Human |
| Host: | Rabbit |
| Isotype: | IgG |
| Clonality: | Polyclonal |
| Immunogen: | Fusion protein of human CFHR2 |
| Formulation: | pH7.4 PBS, 0.05% NaN ₃ , 40% Glycerol |
| Concentration: | lot specific |
| Purification: | Antigen affinity purification |
| Conjugation: | Unconjugated |
| Storage: | Store at -20°C. |
| Stability: | 1 year |
| Predicted Protein Size: | 31 kDa |
| Gene Name: | complement factor H related 2 |
| Database Link: | Entrez Gene 3080 Human P36980 |
| Background: | This gene belongs to a family of complement factor H-related genes (CFHR), which are clustered together with complement factor H gene on chromosome 1, and are involved in regulation of complement. Mutations in CFHR genes have been associated with dense deposit disease and atypical haemolytic-uraemic syndrome. Alternatively spliced transcript variants have been found for this gene. |
| Synonyms: | CFHL2; DDESK59; FHR-2; FHR2; HFL3 |



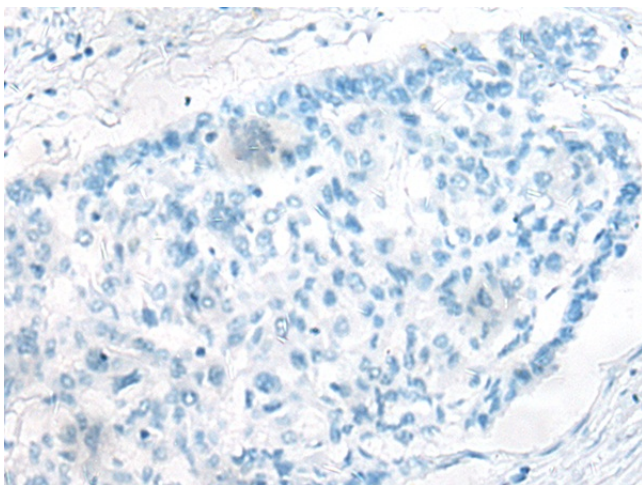
[View online »](#)

Product images:

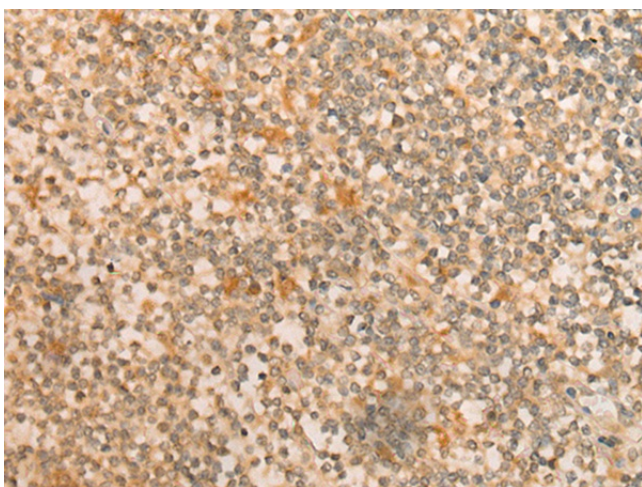
Gel: 12%SDS-PAGE
Lysate: 40 μ g
Lane: Human urinary bladder tissue lysate
Primary antibody: TA365631 (CFHR2 Antibody) at dilution 1/550
Secondary antibody: Goat anti rabbit IgG at 1/8000 dilution
Exposure time: 2 minutes



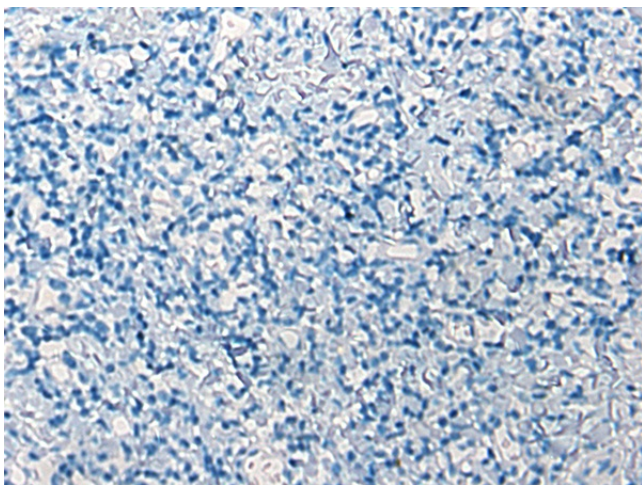
Immunohistochemistry of paraffin-embedded Human liver cancer tissue using TA365631 (CFHR2 Antibody) at dilution 1/35 (Original magnification: \times 200)



Immunohistochemistry of paraffin-embedded Human liver cancer tissue using TA365631 (CFHR2 Antibody) at dilution 1/35, treated with fusion protein. (Original magnification: $\times 200$)



Immunohistochemistry of paraffin-embedded Human tonsil tissue using TA365631 (CFHR2 Antibody) at dilution 1/35 (Original magnification: $\times 200$)



Immunohistochemistry of paraffin-embedded Human tonsil tissue using TA365631 (CFHR2 Antibody) at dilution 1/35, treated with fusion protein. (Original magnification: $\times 200$)