

## Product datasheet for **TA365630S**

### **GARS1 Rabbit Polyclonal Antibody**

#### **Product data:**

<b>Product Type:</b>	Primary Antibodies
<b>Applications:</b>	IHC, WB
<b>Recommended Dilution:</b>	WB: 500-2000 WB positive control: 293T, Jurkat, Raji and HT-29 cell, Mouse brain tissue, A431 and Hela cell lysates IHC: 50-300 Positive control: Human prostate cancer Predicted cell location: Cytoplasm
<b>Reactivity:</b>	Human, Mouse, Rat
<b>Host:</b>	Rabbit
<b>Isotype:</b>	IgG
<b>Clonality:</b>	Polyclonal
<b>Immunogen:</b>	Fusion protein of human GARS1
<b>Formulation:</b>	pH7.4 PBS, 0.05% NaN <sub>3</sub> , 40% Glycerol
<b>Purification:</b>	Antigen affinity purification
<b>Conjugation:</b>	Unconjugated
<b>Storage:</b>	Store at -20°C.
<b>Stability:</b>	1 year
<b>Predicted Protein Size:</b>	83 kDa
<b>Gene Name:</b>	glycyl-tRNA synthetase
<b>Database Link:</b>	<a href="#">Entrez Gene 2617 Human P41250</a>

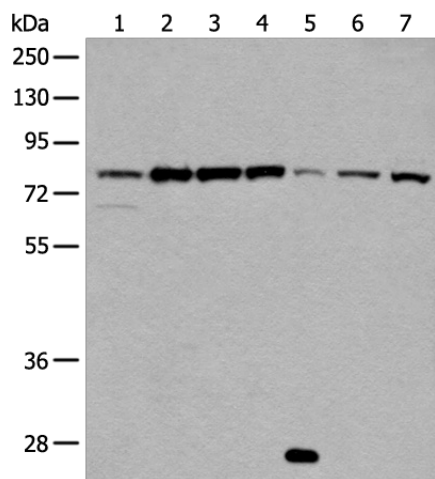
**Background:** This gene encodes glycyl-tRNA synthetase, one of the aminoacyl-tRNA synthetases that charge tRNAs with their cognate amino acids. The encoded enzyme is an (alpha)<sub>2</sub> dimer which belongs to the class II family of tRNA synthetases. It has been shown to be a target of autoantibodies in the human autoimmune diseases, polymyositis or dermatomyositis. Two transcript variants encoding different isoforms have been found for this gene. [provided by RefSeq, Oct 2015]



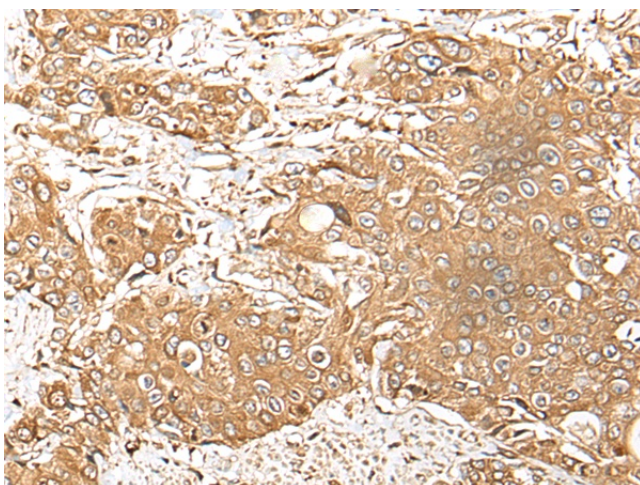
[View online »](#)

Synonyms: CMT2D; DSMAV; GlyRS; HMN5; SMAD1

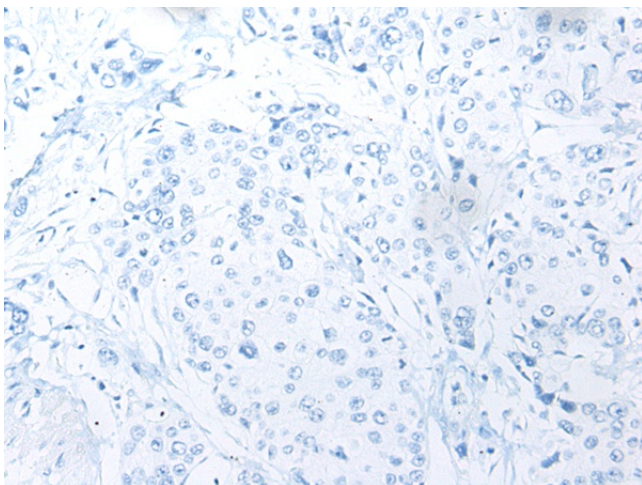
**Product images:**



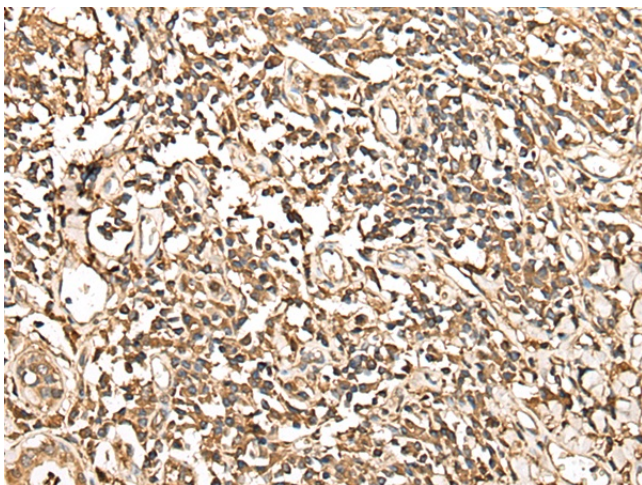
Gel: 8%SDS-PAGE  
 Lysate: 40 µg  
 Lane 1-7: 293T  
 Jurkat  
 Raji and HT-29 cell  
 Mouse brain tissue  
 A431 and  
 HeLa cell lysates  
 Primary antibody: [TA365630] (GARS1 Antibody)  
 at dilution 1/800  
 Secondary antibody: Goat anti rabbit IgG at  
 1/8000 dilution  
 Exposure time: 60 seconds



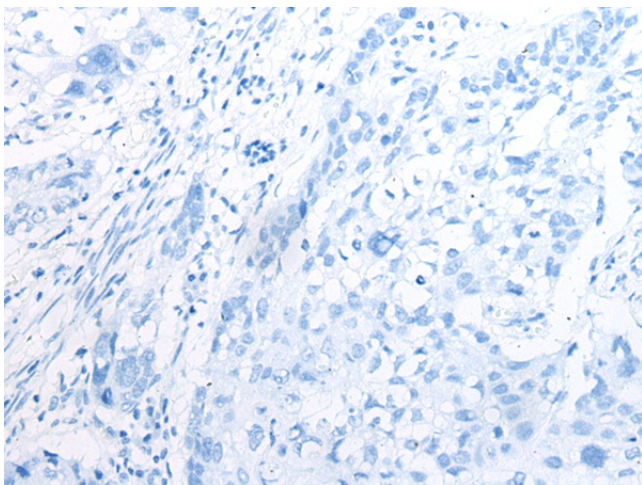
Immunohistochemistry of paraffin-embedded  
 Human prostate cancer tissue using [TA365630]  
 (GARS1 Antibody) at dilution 1/60 (Original  
 magnification: x200)



Immunohistochemistry of paraffin-embedded Human prostate cancer tissue using [TA365630] (GARS1 Antibody) at dilution 1/60, treated with fusion protein. (Original magnification: ×200)



Immunohistochemistry of paraffin-embedded Human lung cancer tissue using [TA365630] (GARS1 Antibody) at dilution 1/60 (Original magnification: ×200)



Immunohistochemistry of paraffin-embedded Human lung cancer tissue using [TA365630] (GARS1 Antibody) at dilution 1/60, treated with fusion protein. (Original magnification: ×200)