

Product datasheet for **TA365630**

GARS1 Rabbit Polyclonal Antibody

Product data:

| | |
|-------------------------|--|
| Product Type: | Primary Antibodies |
| Applications: | IHC, WB |
| Recommended Dilution: | WB: 500-2000 WB positive control: 293T, Jurkat, Raji and HT-29 cell, Mouse brain tissue, A431 and Hela cell lysates IHC: 50-300 Positive control: Human prostate cancer Predicted cell location: Cytoplasm |
| Reactivity: | Human, Mouse, Rat |
| Host: | Rabbit |
| Isotype: | IgG |
| Clonality: | Polyclonal |
| Immunogen: | Fusion protein of human GARS1 |
| Formulation: | pH7.4 PBS, 0.05% NaN ₃ , 40% Glycerol |
| Concentration: | lot specific |
| Purification: | Antigen affinity purification |
| Conjugation: | Unconjugated |
| Storage: | Store at -20°C. |
| Stability: | 1 year |
| Predicted Protein Size: | 83 kDa |
| Gene Name: | glycyl-tRNA synthetase |
| Database Link: | Entrez Gene 2617 Human P41250 |



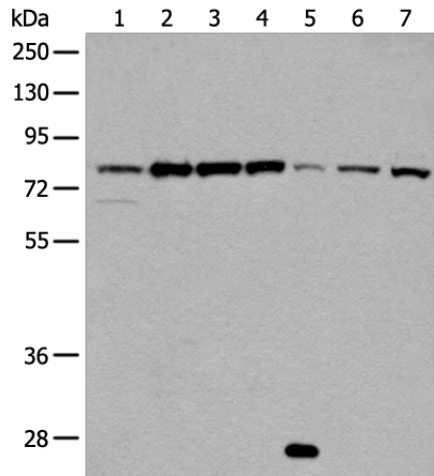
[View online »](#)

Background:

This gene encodes glycyl-tRNA synthetase, one of the aminoacyl-tRNA synthetases that charge tRNAs with their cognate amino acids. The encoded enzyme is an (alpha)₂ dimer which belongs to the class II family of tRNA synthetases. It has been shown to be a target of autoantibodies in the human autoimmune diseases, polymyositis or dermatomyositis. Two transcript variants encoding different isoforms have been found for this gene. [provided by RefSeq, Oct 2015]

Synonyms:

CMT2D; DSMAV; GlyRS; HMN5; SMAD1

Product images:


Gel: 8%SDS-PAGE

Lysate: 40 µg

Lane 1-7: 293T

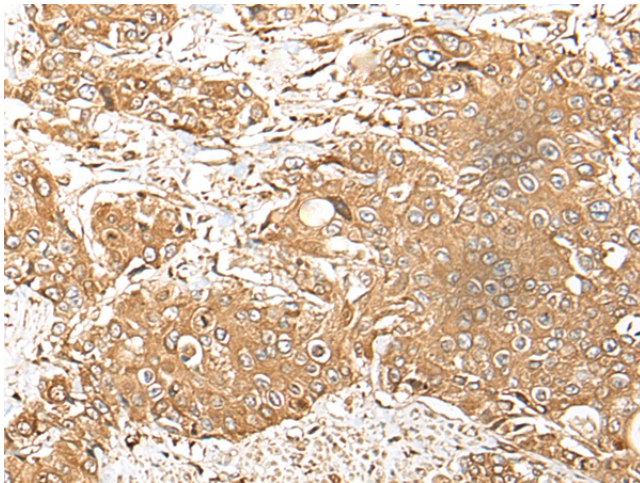
Jurkat

Raji and HT-29 cell
Mouse brain tissue
A431 and
Hela cell lysates

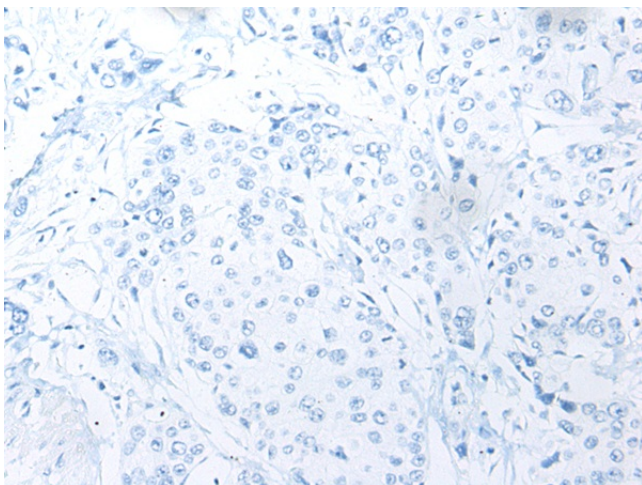
Primary antibody: TA365630 (GARS1 Antibody) at
dilution 1/800

Secondary antibody: Goat anti rabbit IgG at
1/8000 dilution

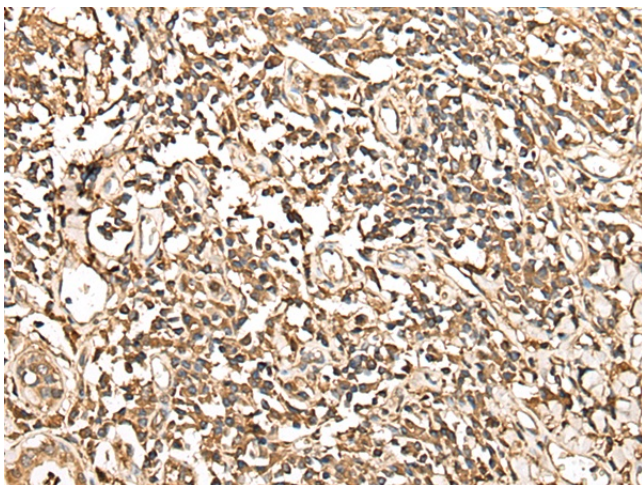
Exposure time: 60 seconds



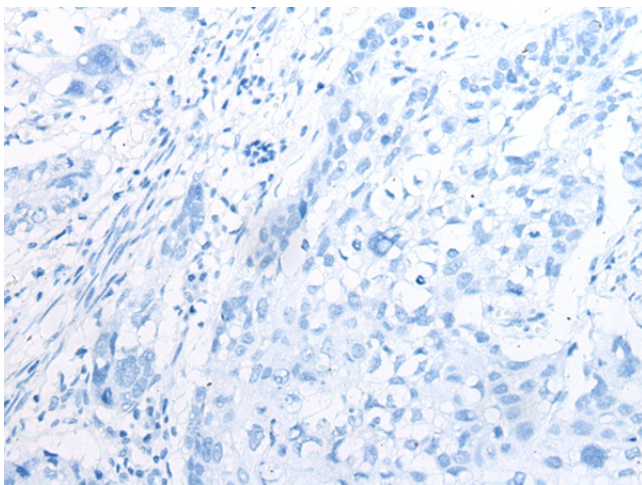
Immunohistochemistry of paraffin-embedded
Human prostate cancer tissue using TA365630
(GARS1 Antibody) at dilution 1/60 (Original
magnification: ×200)



Immunohistochemistry of paraffin-embedded Human prostate cancer tissue using TA365630 (GARS1 Antibody) at dilution 1/60, treated with fusion protein. (Original magnification: ×200)



Immunohistochemistry of paraffin-embedded Human lung cancer tissue using TA365630 (GARS1 Antibody) at dilution 1/60 (Original magnification: ×200)



Immunohistochemistry of paraffin-embedded Human lung cancer tissue using TA365630 (GARS1 Antibody) at dilution 1/60, treated with fusion protein. (Original magnification: ×200)