

Product datasheet for **TA365628S**

CEP57 Rabbit Polyclonal Antibody

Product data:

Product Type:	Primary Antibodies
Applications:	IHC, WB
Recommended Dilution:	WB: 500-2000 WB positive control: Hela cell lysate IHC: 25-100 Positive control: Human colorectal cancer Predicted cell location: Nucleus
Reactivity:	Human, Mouse, Rat
Host:	Rabbit
Isotype:	IgG
Clonality:	Polyclonal
Immunogen:	Full length fusion protein
Formulation:	pH7.4 PBS, 0.05% NaN ₃ , 40% Glycerol
Purification:	Antigen affinity purification
Conjugation:	Unconjugated
Storage:	Store at -20°C.
Stability:	1 year
Predicted Protein Size:	57 kDa
Gene Name:	centrosomal protein 57
Database Link:	Entrez Gene 9702 Human Q86XR8



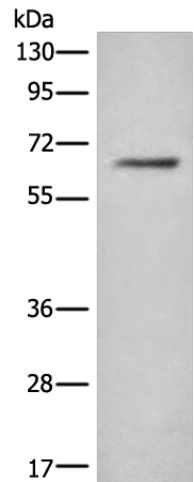
[View online »](#)

Background:

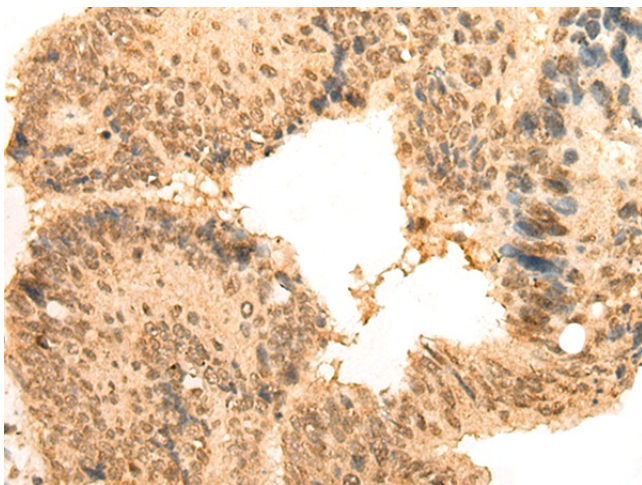
This gene encodes a cytoplasmic protein called Translokain. This protein localizes to the centrosome and has a function in microtubular stabilization. The N-terminal half of this protein is required for its centrosome localization and for its multimerization, and the C-terminal half is required for nucleating, bundling and anchoring microtubules to the centrosomes. This protein specifically interacts with fibroblast growth factor 2 (FGF2), sorting nexin 6, Ran-binding protein M and the kinesins KIF3A and KIF3B, and thus mediates the nuclear translocation and mitogenic activity of the FGF2. It also interacts with cyclin D1 and controls nucleocytoplasmic distribution of the cyclin D1 in quiescent cells. This protein is crucial for maintaining correct chromosomal number during cell division. Mutations in this gene cause mosaic variegated aneuploidy syndrome, a rare autosomal recessive disorder. Multiple alternatively spliced transcript variants encoding different isoforms have been identified.

Synonyms:

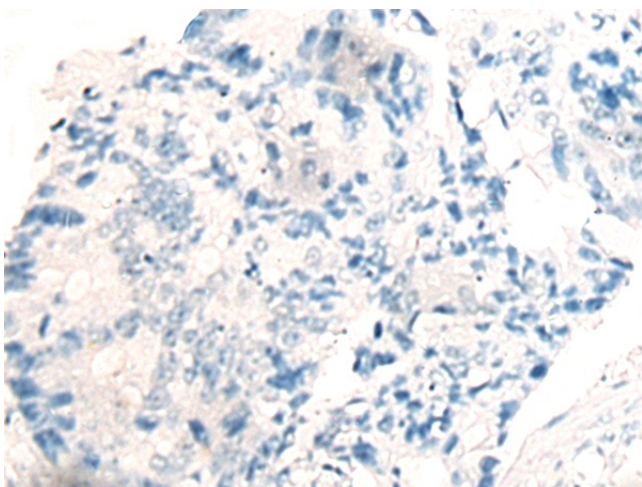
KIAA0092; PIG8; translokain; TSP57

Product images:

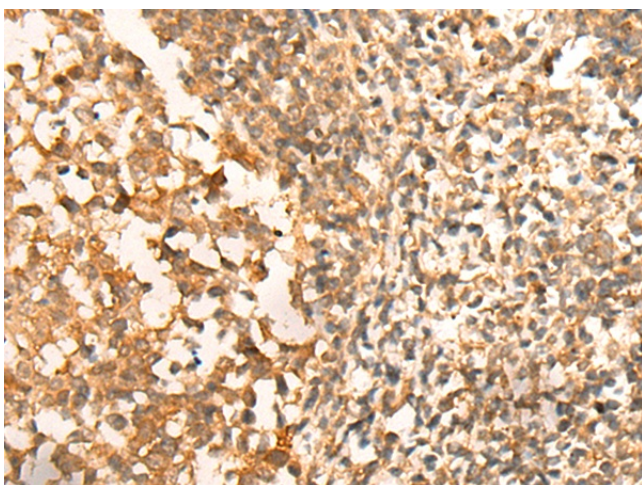
Gel: 8%SDS-PAGE
Lysate: 40 µg
Lane: HeLa cell lysate
Primary antibody: [TA365628] (CEP57 Antibody) at dilution 1/450
Secondary antibody: Goat anti rabbit IgG at 1/8000 dilution
Exposure time: 2 minutes



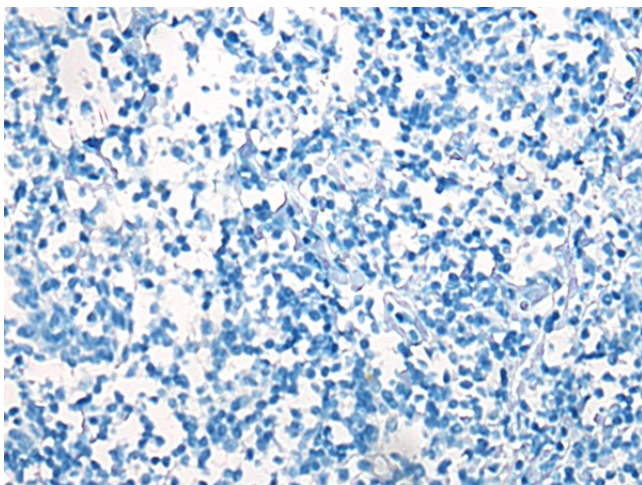
Immunohistochemistry of paraffin-embedded Human colorectal cancer tissue using [TA365628] (CEP57 Antibody) at dilution 1/30 (Original magnification: ×200)



Immunohistochemistry of paraffin-embedded Human colorectal cancer tissue using [TA365628] (CEP57 Antibody) at dilution 1/30, treated with fusion protein. (Original magnification: ×200)



Immunohistochemistry of paraffin-embedded Human tonsil tissue using [TA365628] (CEP57 Antibody) at dilution 1/30 (Original magnification: ×200)



Immunohistochemistry of paraffin-embedded Human tonsil tissue using [TA365628] (CEP57 Antibody) at dilution 1/30, treated with fusion protein. (Original magnification: x200)