

Product datasheet for **TA365622S**

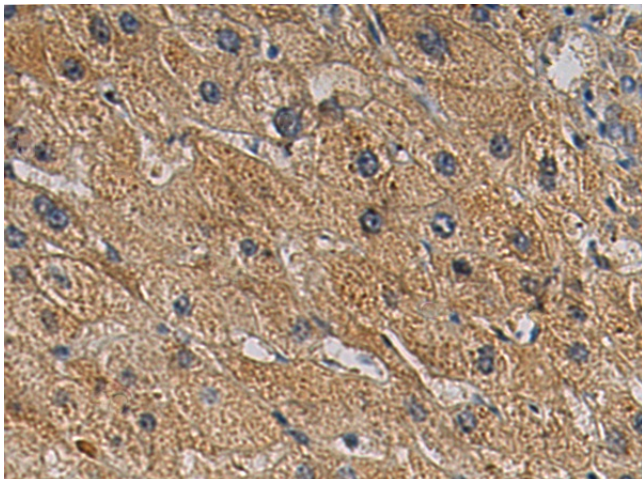
Centaurin alpha 2 (ADAP2) Rabbit Polyclonal Antibody

Product data:

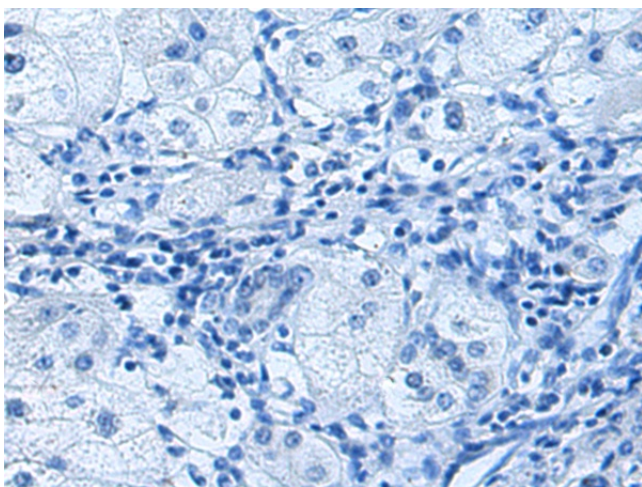
Product Type:	Primary Antibodies
Applications:	IHC
Recommended Dilution:	IHC: 100-300 Positive control: Human liver cancer Predicted cell location: Cytoplasm
Reactivity:	Human, Mouse, Rat
Host:	Rabbit
Isotype:	IgG
Clonality:	Polyclonal
Immunogen:	Fusion protein of human ADAP2
Formulation:	pH7.4 PBS, 0.05% NaN ₃ , 40% Glycerol
Purification:	Antigen affinity purification
Conjugation:	Unconjugated
Storage:	Store at -20°C.
Stability:	1 year
Gene Name:	ArfGAP with dual PH domains 2
Database Link:	Entrez Gene 55803 Human Q9NPF8
Background:	The protein encoded by this gene binds beta-tubulin and increases the stability of microtubules. The encoded protein can also translocate to the cell membrane and bind phosphatidylinositol 3,4,5-trisphosphate (PtdInsP3) and inositol 1,3,4,5-tetrakisphosphate (InsP4). In addition, this protein is a GTPase-activating protein for ADP ribosylation factor 6 and may be able to block the entry of some RNA viruses.
Synonyms:	cent-b; CENTA2; Centaurin-alpha-2; HSA272195



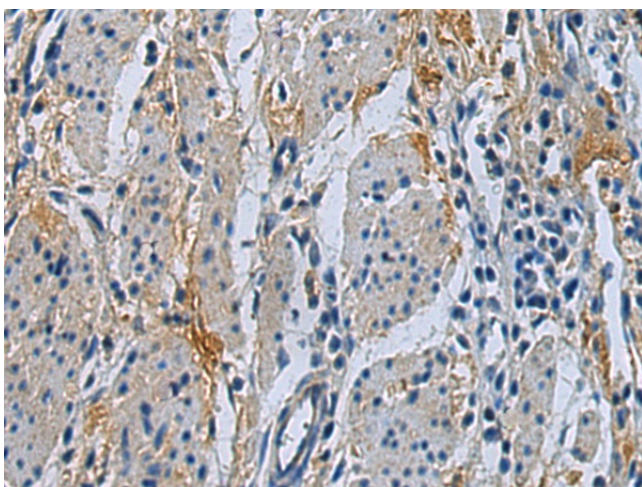
[View online »](#)

Product images:

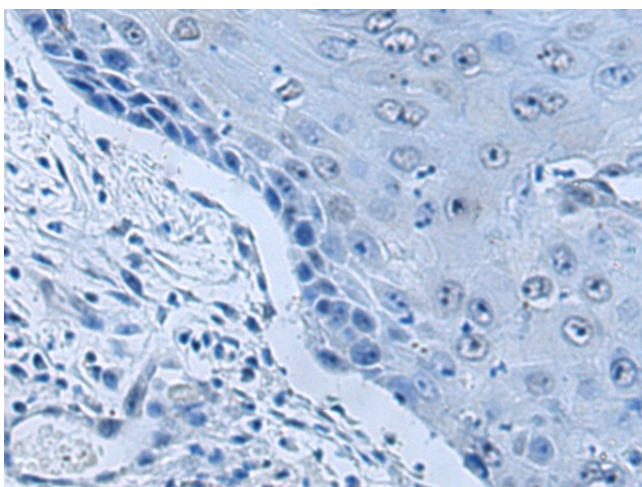
Immunohistochemistry of paraffin-embedded Human liver cancer tissue using [TA365622] (ADAP2 Antibody) at dilution 1/140 (Original magnification: ×200)



Immunohistochemistry of paraffin-embedded Human liver cancer tissue using [TA365622] (ADAP2 Antibody) at dilution 1/140, treated with fusion protein. (Original magnification: ×200)



Immunohistochemistry of paraffin-embedded Human esophagus cancer tissue using [TA365622] (ADAP2 Antibody) at dilution 1/140 (Original magnification: $\times 200$)



Immunohistochemistry of paraffin-embedded Human esophagus cancer tissue using [TA365622] (ADAP2 Antibody) at dilution 1/140, treated with fusion protein. (Original magnification: $\times 200$)