

## Product datasheet for **TA365616S**

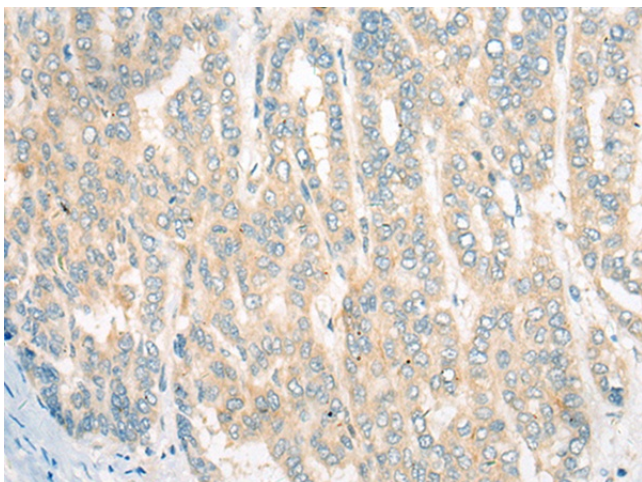
### CDKAL1 Rabbit Polyclonal Antibody

#### Product data:

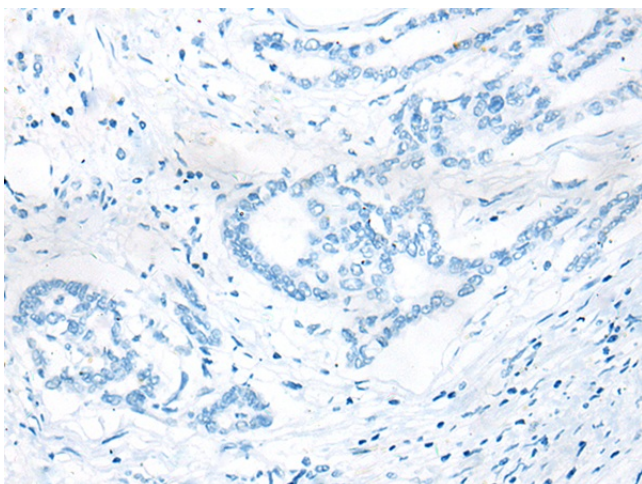
Product Type:	Primary Antibodies
Applications:	IHC
Recommended Dilution:	IHC: 50-300 Positive control: Human liver cancer Predicted cell location: Cytoplasm and Cell membrane
Reactivity:	Human, Mouse
Host:	Rabbit
Isotype:	IgG
Clonality:	Polyclonal
Immunogen:	Full length fusion protein
Formulation:	pH7.4 PBS, 0.05% NaN <sub>3</sub> , 40% Glycerol
Purification:	Antigen affinity purification
Conjugation:	Unconjugated
Storage:	Store at -20°C.
Stability:	1 year
Gene Name:	CDK5 regulatory subunit associated protein 1 like 1
Database Link:	<a href="#">Entrez Gene 54901 Human</a> <a href="#">Q5VV42</a>
Background:	The protein encoded by this gene is a member of the methyltransferase family. The function of this gene is not known. Genome-wide association studies have linked single nucleotide polymorphisms in an intron of this gene with susceptibility to type 2 diabetes.
Synonyms:	FLJ20342; FLJ46705; MGC75469; OTTHUMP00000016083



[View online »](#)

**Product images:**

Immunohistochemistry of paraffin-embedded Human liver cancer tissue using [TA365616] (CDKAL1 Antibody) at dilution 1/60 (Original magnification: x200)



Immunohistochemistry of paraffin-embedded Human liver cancer tissue using [TA365616] (CDKAL1 Antibody) at dilution 1/60, treated with fusion protein. (Original magnification: x200)