

## Product datasheet for **TA365616**

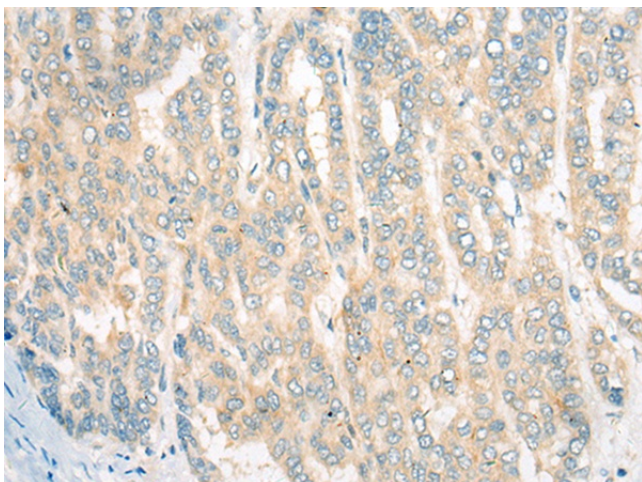
### CDKAL1 Rabbit Polyclonal Antibody

#### Product data:

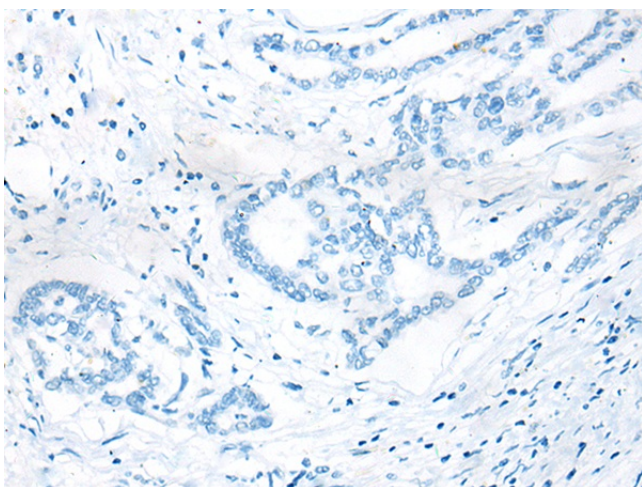
|                       |   |
|-----------------------|---|
| Product Type:         | Primary Antibodies  |
| Applications:         | IHC   |
| Recommended Dilution: | IHC: 50-300<br>Positive control: Human liver cancer<br>Predicted cell location: Cytoplasm and Cell membrane   |
| Reactivity:           | Human, Mouse  |
| Host:                 | Rabbit  |
| Isotype:              | IgG   |
| Clonality:            | Polyclonal  |
| Immunogen:            | Full length fusion protein  |
| Formulation:          | pH7.4 PBS, 0.05% NaN <sub>3</sub> , 40% Glycerol  |
| Concentration:        | lot specific  |
| Purification:         | Antigen affinity purification   |
| Conjugation:          | Unconjugated  |
| Storage:              | Store at -20°C.   |
| Stability:            | 1 year  |
| Gene Name:            | CDK5 regulatory subunit associated protein 1 like 1   |
| Database Link:        | <a href="#">Entrez Gene 54901 Human Q5VV42</a>  |
| Background:           | The protein encoded by this gene is a member of the methylthiotransferase family. The function of this gene is not known. Genome-wide association studies have linked single nucleotide polymorphisms in an intron of this gene with susceptibility to type 2 diabetes. |
| Synonyms:             | FLJ20342; FLJ46705; MGC75469; OTTHUMP00000016083  |



[View online »](#)

**Product images:**

Immunohistochemistry of paraffin-embedded Human liver cancer tissue using TA365616 (CDKAL1 Antibody) at dilution 1/60 (Original magnification:  $\times 200$ )



Immunohistochemistry of paraffin-embedded Human liver cancer tissue using TA365616 (CDKAL1 Antibody) at dilution 1/60, treated with fusion protein. (Original magnification:  $\times 200$ )