

Product datasheet for **TA365596S**

CCDC120 Rabbit Polyclonal Antibody

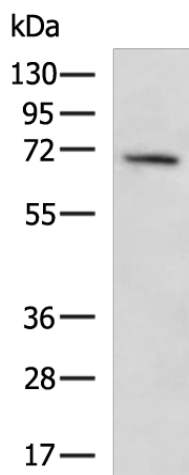
Product data:

| | |
|-------------------------|---|
| Product Type: | Primary Antibodies |
| Applications: | WB |
| Recommended Dilution: | WB: 500-2000 WB positive control: Hela cell lysate |
| Reactivity: | Human, Mouse |
| Host: | Rabbit |
| Isotype: | IgG |
| Clonality: | Polyclonal |
| Immunogen: | Fusion protein of human CCDC120 |
| Formulation: | pH7.4 PBS, 0.05% NaN ₃ , 40% Glycerol |
| Purification: | Antigen affinity purification |
| Conjugation: | Unconjugated |
| Storage: | Store at -20°C. |
| Stability: | 1 year |
| Predicted Protein Size: | 68 kDa |
| Gene Name: | coiled-coil domain containing 120 |
| Database Link: | Entrez Gene 90060 Human Q96HB5 |
| Background: | CCDC120, also named as JM11, is required for neurite growth. In differentiating neuroblastoma cells, CCDC120 colocalizes with CYTH2 in both neurite shaft and growth cone areas. CCDC120 has some isoforms with MW 67-70 kDa. |
| Synonyms: | JM11 |



[View online »](#)

Product images:



Gel: 8%SDS-PAGE

Lysate: 40 µg

Lane: Hela cell lysate

Primary antibody: [TA365596] (CCDC120 Antibody) at dilution 1/800

Secondary antibody: Goat anti rabbit IgG at 1/5000 dilution

Exposure time: 40 seconds