

Product datasheet for **TA365596**

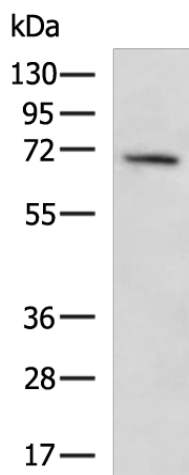
CCDC120 Rabbit Polyclonal Antibody

Product data:

Product Type:	Primary Antibodies
Applications:	WB
Recommended Dilution:	WB: 500-2000 WB positive control: Hela cell lysate
Reactivity:	Human, Mouse
Host:	Rabbit
Isotype:	IgG
Clonality:	Polyclonal
Immunogen:	Fusion protein of human CCDC120
Formulation:	pH7.4 PBS, 0.05% NaN ₃ , 40% Glycerol
Concentration:	lot specific
Purification:	Antigen affinity purification
Conjugation:	Unconjugated
Storage:	Store at -20°C.
Stability:	1 year
Predicted Protein Size:	68 kDa
Gene Name:	coiled-coil domain containing 120
Database Link:	Entrez Gene 90060 Human Q96HB5
Background:	CCDC120, also named as JM11, is required for neurite growth. In differentiating neuroblastoma cells, CCDC120 colocalizes with CYTH2 in both neurite shaft and growth cone areas. CCDC120 has some isoforms with MW 67-70 kDa.
Synonyms:	JM11



[View online »](#)

Product images:

Gel: 8%SDS-PAGE
Lysate: 40 µg
Lane: HeLa cell lysate
Primary antibody: TA365596 (CCDC120 Antibody)
at dilution 1/800
Secondary antibody: Goat anti rabbit IgG at
1/5000 dilution
Exposure time: 40 seconds