

Product datasheet for **TA365593**

CCDC112 Rabbit Polyclonal Antibody

Product data:

Product Type:	Primary Antibodies
Applications:	IHC, WB
Recommended Dilution:	WB: 200-1000 WB positive control: 231 cell lysate IHC: 25-100 Positive control: Human brain Predicted cell location: Cytoplasm or Nucleus
Reactivity:	Human, Mouse
Host:	Rabbit
Isotype:	IgG
Clonality:	Polyclonal
Immunogen:	Fusion protein of human CCDC112
Formulation:	pH7.4 PBS, 0.05% NaN ₃ , 40% Glycerol
Concentration:	lot specific
Purification:	Antigen affinity purification
Conjugation:	Unconjugated
Storage:	Store at -20°C.
Stability:	1 year
Predicted Protein Size:	54 kDa
Gene Name:	coiled-coil domain containing 112
Database Link:	Entrez Gene 153733 Human Q8NEF3



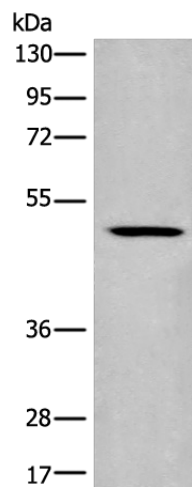
[View online »](#)

Background:

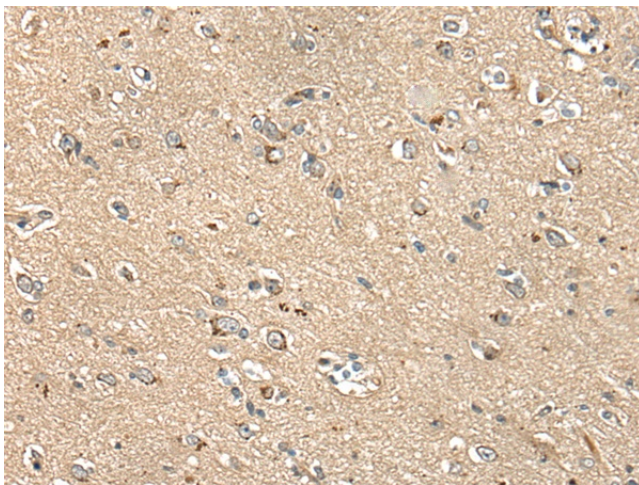
CCDC112 (coiled-coil domain containing 112), also known as MBC1 (mutated in bladder cancer 1), is a 446 amino acid protein. The gene encoding CCDC112 is located on chromosome 5. Due to alternative splicing events, CCDC112 exists as two isoforms. Chromosome 5 comprises about 6% of human genomic DNA and contains 181 million base pairs encoding around 1,000 genes. It is associated with Cockayne syndrome through the ERCC8 gene and familial adenomatous polyposis through the adenomatous polyposis coli (APC) tumor suppressor gene. Treacher Collins syndrome is also chromosome 5 associated and is caused by insertions or deletions within the TCOF1 gene. Deletion of the p arm of chromosome 5 leads to Cri du chat syndrome. Deletion of 5q or chromosome 5 altogether is common in therapy-related acute myelogenous leukemias and myelodysplastic syndrome.

Synonyms:

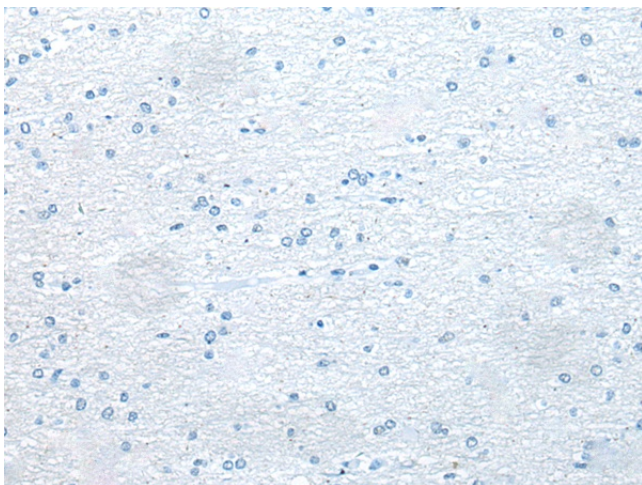
MBC1; MGC39633

Product images:

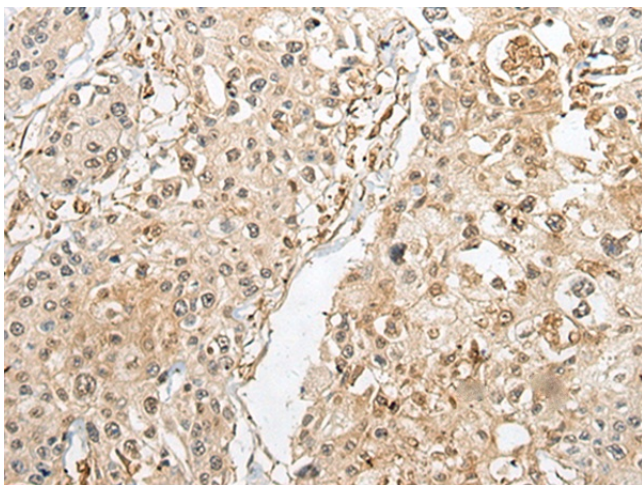
Gel: 8%SDS-PAGE
Lysate: 40 µg
Lane: 231 cell lysate
Primary antibody: TA365593 (CCDC112 Antibody) at dilution 1/500
Secondary antibody: Goat anti rabbit IgG at 1/8000 dilution
Exposure time: 15 seconds



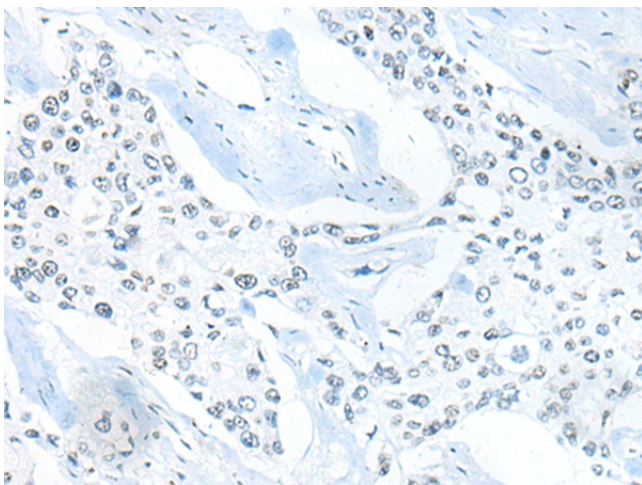
Immunohistochemistry of paraffin-embedded Human brain tissue using TA365593 (CCDC112 Antibody) at dilution 1/30 (Original magnification: ×200)



Immunohistochemistry of paraffin-embedded Human brain tissue using TA365593 (CCDC112 Antibody) at dilution 1/30, treated with fusion protein. (Original magnification: $\times 200$)



Immunohistochemistry of paraffin-embedded Human prostate cancer tissue using TA365593 (CCDC112 Antibody) at dilution 1/30 (Original magnification: $\times 200$)



Immunohistochemistry of paraffin-embedded Human prostate cancer tissue using TA365593 (CCDC112 Antibody) at dilution 1/30, treated with fusion protein. (Original magnification: $\times 200$)