

Product datasheet for **TA365591**

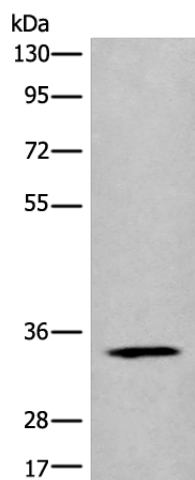
CC137 (CCDC137) Rabbit Polyclonal Antibody

Product data:

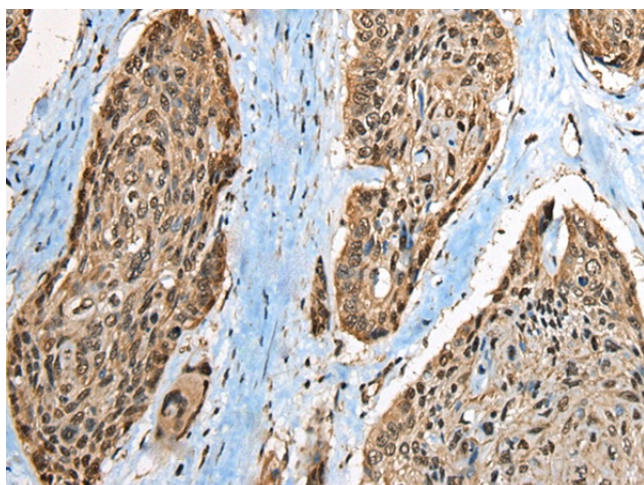
Product Type:	Primary Antibodies
Applications:	IHC, WB
Recommended Dilution:	WB: 200-1000 WB positive control: 293T cell lysate IHC: 30-150 Positive control: Human esophagus cancer Predicted cell location: Nucleus
Reactivity:	Human
Host:	Rabbit
Isotype:	IgG
Clonality:	Polyclonal
Immunogen:	Full length fusion protein
Formulation:	pH7.4 PBS, 0.05% NaN ₃ , 40% Glycerol
Concentration:	lot specific
Purification:	Antigen affinity purification
Conjugation:	Unconjugated
Storage:	Store at -20°C.
Stability:	1 year
Predicted Protein Size:	33 kDa
Gene Name:	coiled-coil domain containing 137
Database Link:	Entrez Gene 339230 Human Q6PK04
Background:	The function of this protein remains unknown.
Synonyms:	MGC16597



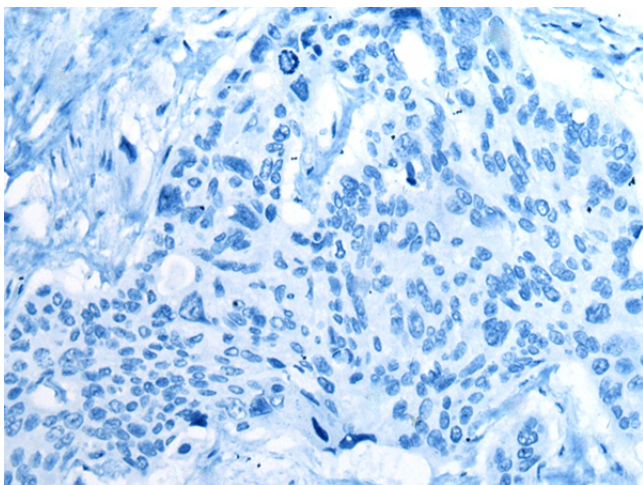
[View online »](#)

Product images:

Gel: 8%SDS-PAGE
Lysate: 40 μ g
Lane: 293T cell lysate
Primary antibody: TA365591 (CCDC137 Antibody)
at dilution 1/350
Secondary antibody: Goat anti rabbit IgG at
1/8000 dilution
Exposure time: 20 seconds



Immunohistochemistry of paraffin-embedded
Human esophagus cancer tissue using TA365591
(CCDC137 Antibody) at dilution 1/35 (Original
magnification: \times 200)



Immunohistochemistry of paraffin-embedded Human esophagus cancer tissue using TA365591 (CCDC137 Antibody) at dilution 1/35, treated with fusion protein. (Original magnification: ×200)