

Product datasheet for **TA365586**

Caspr2 (CNTNAP2) Rabbit Polyclonal Antibody

Product data:

Product Type:	Primary Antibodies
Applications:	IHC, WB
Recommended Dilution:	WB: 200-1000 WB positive control: Rat brain tissue □ Mouse brain tissue and Human cerebrum tissue lysates IHC: 20-100 Positive control: Human colorectal cancer Predicted cell location: Cell membrane
Reactivity:	Human, Mouse, Rat
Host:	Rabbit
Isotype:	IgG
Clonality:	Polyclonal
Immunogen:	Fusion protein of human CNTNAP2
Formulation:	pH7.4 PBS, 0.05% NaN ₃ , 40% Glycerol
Concentration:	lot specific
Purification:	Antigen affinity purification
Conjugation:	Unconjugated
Storage:	Store at -20°C.
Stability:	1 year
Predicted Protein Size:	148 kDa
Gene Name:	contactin associated protein-like 2
Database Link:	Entrez Gene 26047 Human Q9UHC6



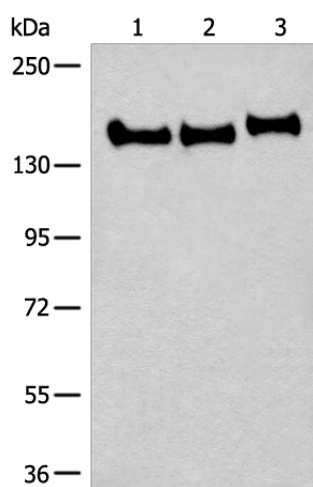
[View online »](#)

Background:

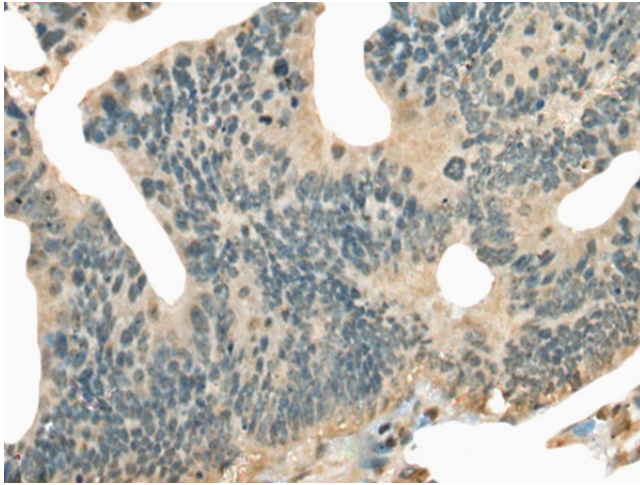
This gene encodes a member of the neurexin family which functions in the vertebrate nervous system as cell adhesion molecules and receptors. This protein, like other neurexin proteins, contains epidermal growth factor repeats and laminin G domains. In addition, it includes an F5/8 type C domain, discoidin/neuropilin- and fibrinogen-like domains, thrombospondin N-terminal-like domains and a putative PDZ binding site. This protein is localized at the juxtaparanodes of myelinated axons, and mediates interactions between neurons and glia during nervous system development and is also involved in localization of potassium channels within differentiating axons. This gene encompasses almost 1.5% of chromosome 7 and is one of the largest genes in the human genome. It is directly bound and regulated by forkhead box protein P2 (FOXP2), a transcription factor related to speech and language development. This gene has been implicated in multiple neurodevelopmental disorders, including Gilles de la Tourette syndrome, schizophrenia, epilepsy, autism, ADHD and mental retardation.

Synonyms:

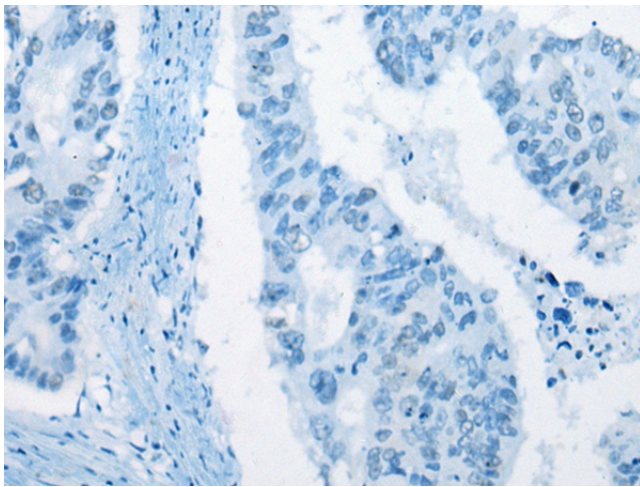
AUTS15; Caspr2; CDFE; DKFZp781D1846; KIAA0868; NRXN4

Product images:

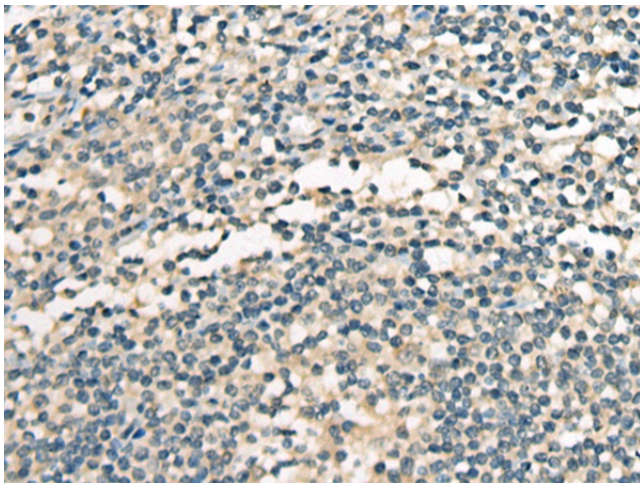
Gel: 6%SDS-PAGE
Lysate: 40 µg
Lane 1-3: Rat brain tissue
Mouse brain tissue and Human cerebrum tissue
lysates
Primary antibody: TA365586 (CNTNAP2 Antibody)
at dilution 1/350
Secondary antibody: Goat anti rabbit IgG at
1/8000 dilution
Exposure time: 1 minute



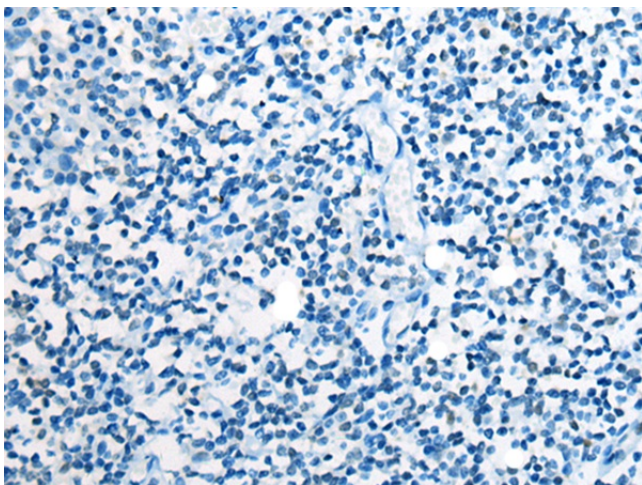
Immunohistochemistry of paraffin-embedded Human colorectal cancer tissue using TA365586 (CNTNAP2 Antibody) at dilution 1/30 (Original magnification: $\times 200$)



Immunohistochemistry of paraffin-embedded Human colorectal cancer tissue using TA365586 (CNTNAP2 Antibody) at dilution 1/30, treated with fusion protein. (Original magnification: $\times 200$)



Immunohistochemistry of paraffin-embedded Human tonsil tissue using TA365586 (CNTNAP2 Antibody) at dilution 1/30 (Original magnification: $\times 200$)



Immunohistochemistry of paraffin-embedded Human tonsil tissue using TA365586 (CNTNAP2 Antibody) at dilution 1/30, treated with fusion protein. (Original magnification: $\times 200$)