

## Product datasheet for **TA365584S**

### CARS1 Rabbit Polyclonal Antibody

#### Product data:

|                         |   |
|-------------------------|---|
| Product Type:           | Primary Antibodies                                    |
| Applications:           | WB  |
| Recommended Dilution:   | WB: 200-1000<br>WB positive control: Hela cell lysate |
| Reactivity:             | Human, Mouse  |
| Host:                   | Rabbit  |
| Isotype:                | IgG   |
| Clonality:              | Polyclonal  |
| Immunogen:              | Fusion protein of human CARS1                         |
| Formulation:            | pH7.4 PBS, 0.05% NaN <sub>3</sub> , 40% Glycerol      |
| Purification:           | Antigen affinity purification                         |
| Conjugation:            | Unconjugated  |
| Storage:                | Store at -20°C.                                       |
| Stability:              | 1 year  |
| Predicted Protein Size: | 85 kDa  |
| Gene Name:              | cysteinyl-tRNA synthetase                             |
| Database Link:          | <a href="#">Entrez Gene 833 Human P49589</a>          |

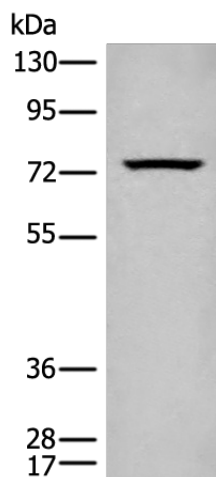
**Background:** This gene encodes a class 1 aminoacyl-tRNA synthetase, cysteinyl-tRNA synthetase. Each of the twenty aminoacyl-tRNA synthetases catalyzes the aminoacylation of a specific tRNA or tRNA isoaccepting family with the cognate amino acid. This gene is one of several located near the imprinted gene domain on chromosome 11p15.5, an important tumor-suppressor gene region. Alterations in this region have been associated with Beckwith-Wiedemann syndrome, Wilms tumor, rhabdomyosarcoma, adrenocortical carcinoma, and lung, ovarian and breast cancers. Alternative splicing of this gene results in multiple transcript variants. [provided by RefSeq, Aug 2010]

**Synonyms:** CARS1; CYSRS; MGC:11246



[View online »](#)

## Product images:



Gel: 8%SDS-PAGE  
Lysate: 40  $\mu$ g  
Lane: HeLa cell lysate  
Primary antibody: [TA365584] (CARS1 Antibody)  
at dilution 1/250  
Secondary antibody: Goat anti rabbit IgG at  
1/8000 dilution  
Exposure time: 1 minute