

Product datasheet for **TA365578S**

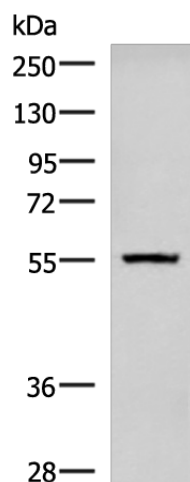
CaMKK (CAMKK1) Rabbit Polyclonal Antibody

Product data:

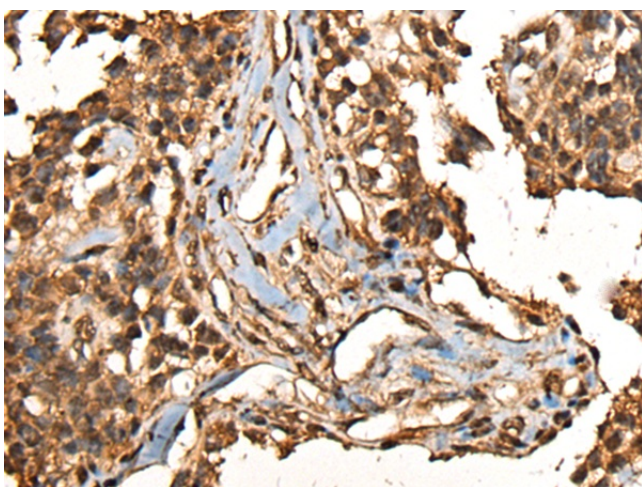
| | |
|-------------------------|---|
| Product Type: | Primary Antibodies |
| Applications: | IHC, WB |
| Recommended Dilution: | WB: 500-2000 WB positive control: Human cerebella tissue lysate IHC: 30-150 Positive control: Human ovarian cancer Predicted cell location: Nucleus |
| Reactivity: | Human, Mouse, Rat |
| Host: | Rabbit |
| Isotype: | IgG |
| Clonality: | Polyclonal |
| Immunogen: | Fusion protein of human CAMKK1 |
| Formulation: | pH7.4 PBS, 0.05% NaN ₃ , 40% Glycerol |
| Purification: | Antigen affinity purification |
| Conjugation: | Unconjugated |
| Storage: | Store at -20°C. |
| Stability: | 1 year |
| Predicted Protein Size: | 56 kDa |
| Gene Name: | calcium/calmodulin-dependent protein kinase kinase 1 |
| Database Link: | Entrez Gene 84254 Human Q8N5S9 |
| Background: | The product of this gene belongs to the Serine/Threonine protein kinase family, and to the Ca(2+)/calmodulin-dependent protein kinase subfamily. This protein plays a role in the calcium/calmodulin-dependent (CaM) kinase cascade. Three transcript variants encoding two distinct isoforms have been identified for this gene. |
| Synonyms: | CAMKKA; DKFZp761M0423; MGC34095 |



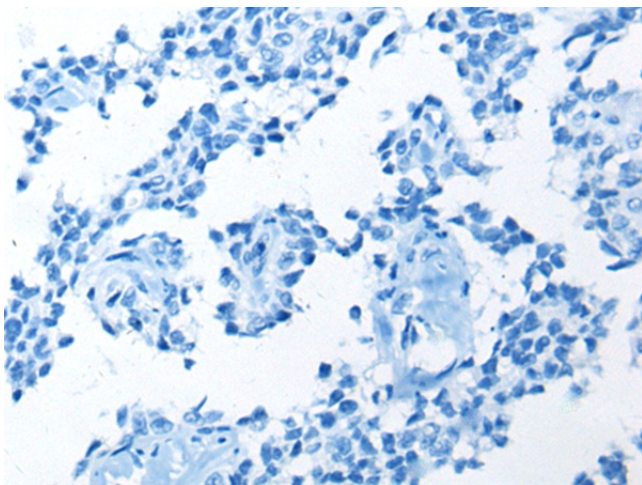
[View online »](#)

Product images:

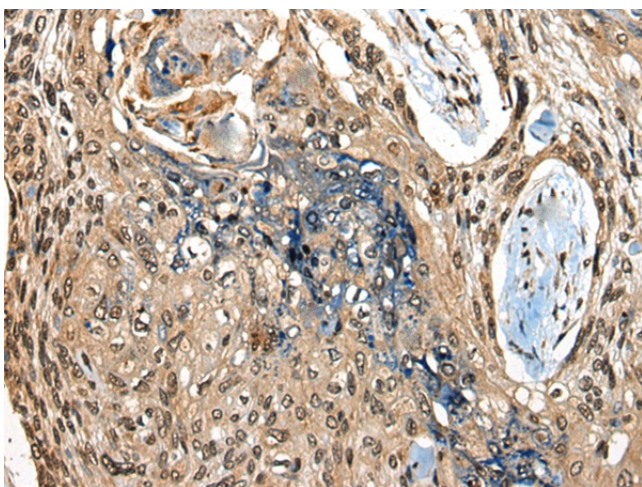
Gel: 8%SDS-PAGE
Lysate: 40 μ g
Lane: Human cerebella tissue lysate
Primary antibody: [TA365578] (CAMKK1 Antibody)
at dilution 1/700
Secondary antibody: Goat anti rabbit IgG at
1/5000 dilution
Exposure time: 40 seconds



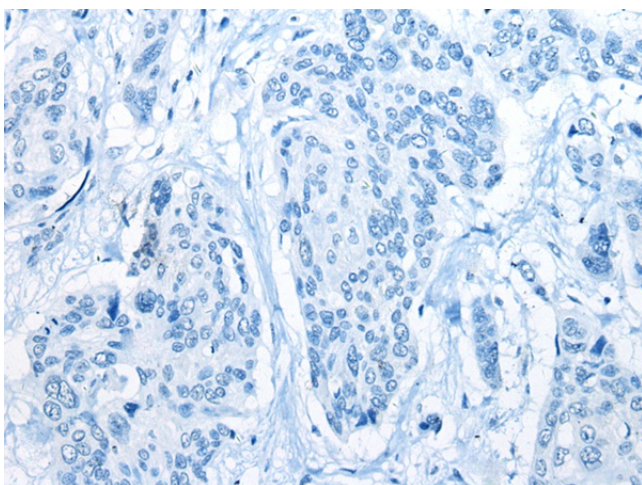
Immunohistochemistry of paraffin-embedded
Human ovarian cancer tissue using [TA365578]
(CAMKK1 Antibody) at dilution 1/35 (Original
magnification: \times 200)



Immunohistochemistry of paraffin-embedded Human ovarian cancer tissue using [TA365578] (CAMKK1 Antibody) at dilution 1/35, treated with fusion protein. (Original magnification: ×200)



Immunohistochemistry of paraffin-embedded Human esophagus cancer tissue using [TA365578] (CAMKK1 Antibody) at dilution 1/35 (Original magnification: ×200)



Immunohistochemistry of paraffin-embedded Human esophagus cancer tissue using [TA365578] (CAMKK1 Antibody) at dilution 1/35, treated with fusion protein. (Original magnification: ×200)